

WAAS CH <b>63026</b> <b>W25A</b>	APP CRS <b>251°</b>	Rwy Idg TDZE Apt Elev	<b>3999</b> <b>86</b> <b>86</b>
--	------------------------	-----------------------------	---------------------------------------

# RNAV (GPS) RWY 25

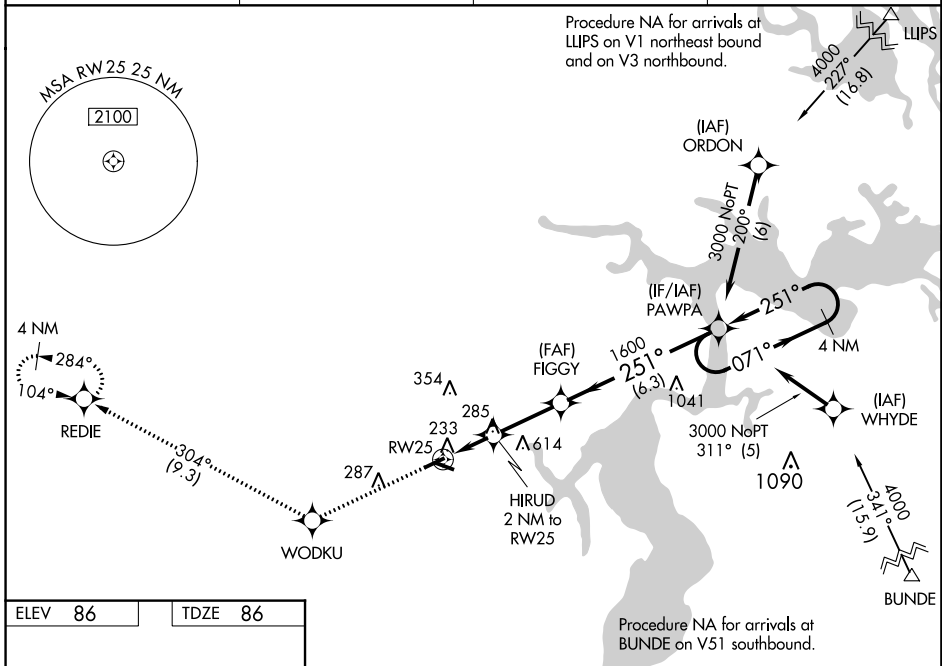
## HERLONG RECREATIONAL (HE'G)

**Baro-VNAV NA** when using Cecil altimeter setting. For uncompensated Baro-VNAV systems, procedure NA below -15°C (5°F) or above 54°C (130°F). DME/DME RNP-0.3 NA.

**NA** When local altimeter setting not received, use Cecil altimeter setting; increase all DA 13 feet and all MDA 20 feet; increase LNAV Cat C and D visibility 1/8 mile. Procedure NA at night for Cat C/D aircraft. Night landing: Rwy 7, 11, 29 NA. Helicopter visibility reduction below 3/4 SM NA.

**MISSED APPROACH:** Climb to 2000 direct WODKU and on track 304° to REDIE and hold.

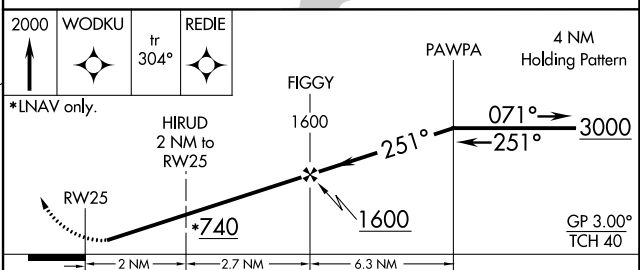
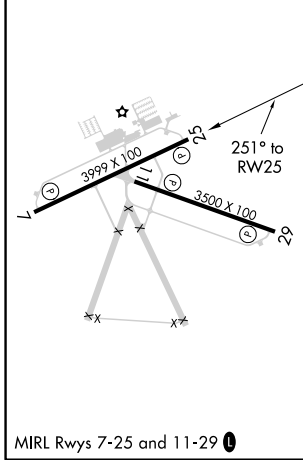
<b>AWOS-3</b> <b>119.275</b>	<b>JACKSONVILLE APP CON</b> <b>127.775 377.075</b>	<b>GCO</b> <b>121.725</b>	<b>UNICOM</b> <b>123.0 (CTAF)</b>
---------------------------------	---	------------------------------	--------------------------------------



SE-3: 28 FEB 2019 to 28 MAR 2019

SE-3: 28 FEB 2019 to 28 MAR 2019

ELEV 86	TDZE 86
---------	---------



CATEGORY	A	B	C	D
LPV DA		378-1	292 (300-1)	
LNAV/VNAV DA		612-1 7/8		526 (600-1 7/8)
LNAV MDA	600-1	514 (600-1)		600-1 3/8 514 (600-1 3/8)
<b>C</b> CIRCLING	600-1	514 (600-1)		980-2 3/4 894 (900-2 3/4) 980-3 894 (900-3)