

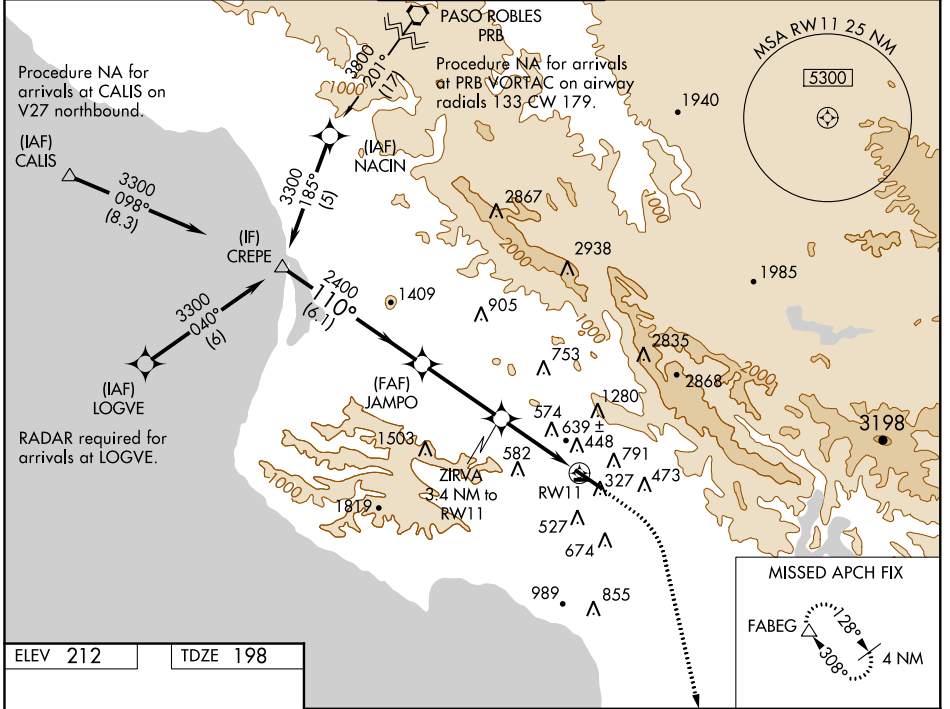
WAAS CH 50328 W11A	APP CRS 110°	Rwy Idg TDZE Apt Elev	5300 198 212
--	------------------------	-----------------------------	---

RNAV (GPS) RWY 11

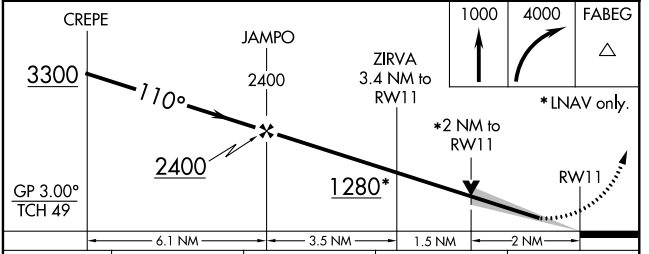
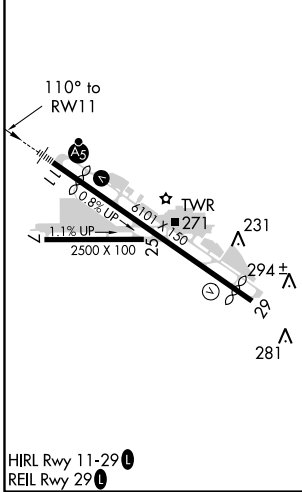
SAN LUIS COUNTY RGNL (SBP)

<p>▼ For uncompensated Baro-VNAV systems, LNAV/VNAV NA below -15°C (5°F) or above 42°C (107°F). Circling NA north of Rwy 11-29. DME/DME RNP-0.3 NA.</p>	<p>MALSR</p>	<p>MISSED APPROACH: Climb to 1000 then climbing right turn to 4000 direct FABEG and hold.</p>
--	---------------------	--

ATIS 120.6	SANTA BARBARA APP CON* 127.725 244.575	SAN LUIS TOWER* 124.0 (CTAF) 0 379.9	GND CON 121.6	UNICOM 122.95
----------------------	--	--	-------------------------	-------------------------



ELEV 212	TDZE 198
----------	----------



CATEGORY	A	B	C	D
LPV DA		398 ½	200 (200-½)	
LNAV/VNAV DA		988-2 ¼	790 (800-2 ¼)	
LNAV MDA	860-½	662 (700-½)	860-1 ½	662 (700-1 ½)
CIRCLING	860-1 648 (700-1)	960-1 748 (800-1)	1160-2 ¾ 948 (1000-2 ¾)	1240-3 1028 (1100-3)

SW-3, 28 FEB 2019 to 28 MAR 2019

SW-3, 28 FEB 2019 to 28 MAR 2019