

VORTAC MQO <b>112.4</b> Chan 71	APP CRS <b>084°</b>	Rwy Idg TDZE Apt Elev	<b>N/A</b> <b>N/A</b> <b>209</b>
---------------------------------------	------------------------	-----------------------------	--

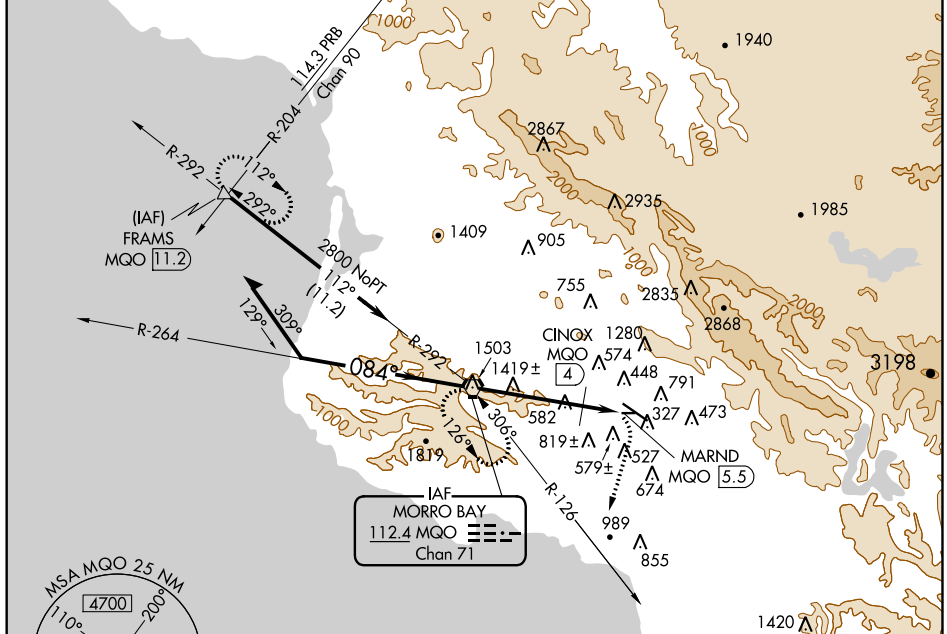
# VOR or TACAN-A

SAN LUIS COUNTY RGNL (SBP)

**⚠** Circling NA north of Rwy 11-29.

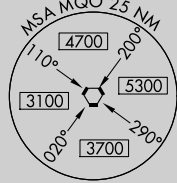
**MISSED APPROACH:** Climbing right turn to 3100 via heading 175° and MQO R-126 to MQO VORTAC and hold. (TACAN Aircraft continue climb to 4000 via MQO R-292 to FRAMS 11.2 DME and hold east, right turns, 292° inbound.)

ATIS <b>120.6</b>	SANTA BARBARA APP CON* <b>127.725 244.575</b>	SAN LUIS TOWER* <b>124.0 (CTAF) 379.9</b>	GND CON <b>121.6</b>	UNICOM <b>122.95</b>
----------------------	--	--	-------------------------	-------------------------



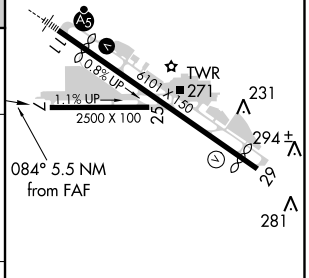
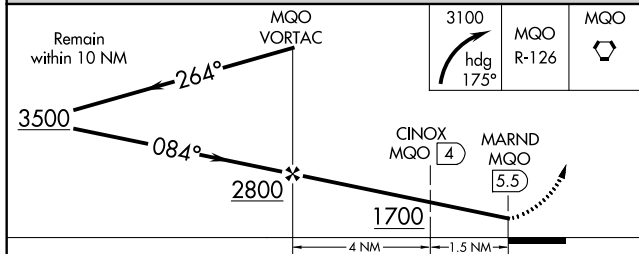
SW-3, 28 FEB 2019 to 28 MAR 2019

SW-3, 28 FEB 2019 to 28 MAR 2019



IAF MORRO BAY  
112.4 MQO  
Chan 71

ELEV 209



CATEGORY	A	B	C	D		
CIRCLING	1700-1¼ 1491 (1500-1¼)	1700-1½ 1491 (1500-1½)	1700-3	1491 (1500-3)	HIRL Rwy 11-29 REIL Rwy 29	
TACAN OR DME MINIMA						
CIRCLING	1120-1¼ 911 (1000-1¼)	1160-2¾ 951 (1000-2¾)	1280-3	1071 (1100-3)	FAF to MAP 5.5 NM	
Knots		60	90	120	150	180
Min:Sec		5:30	3:40	2:45	2:12	1:50