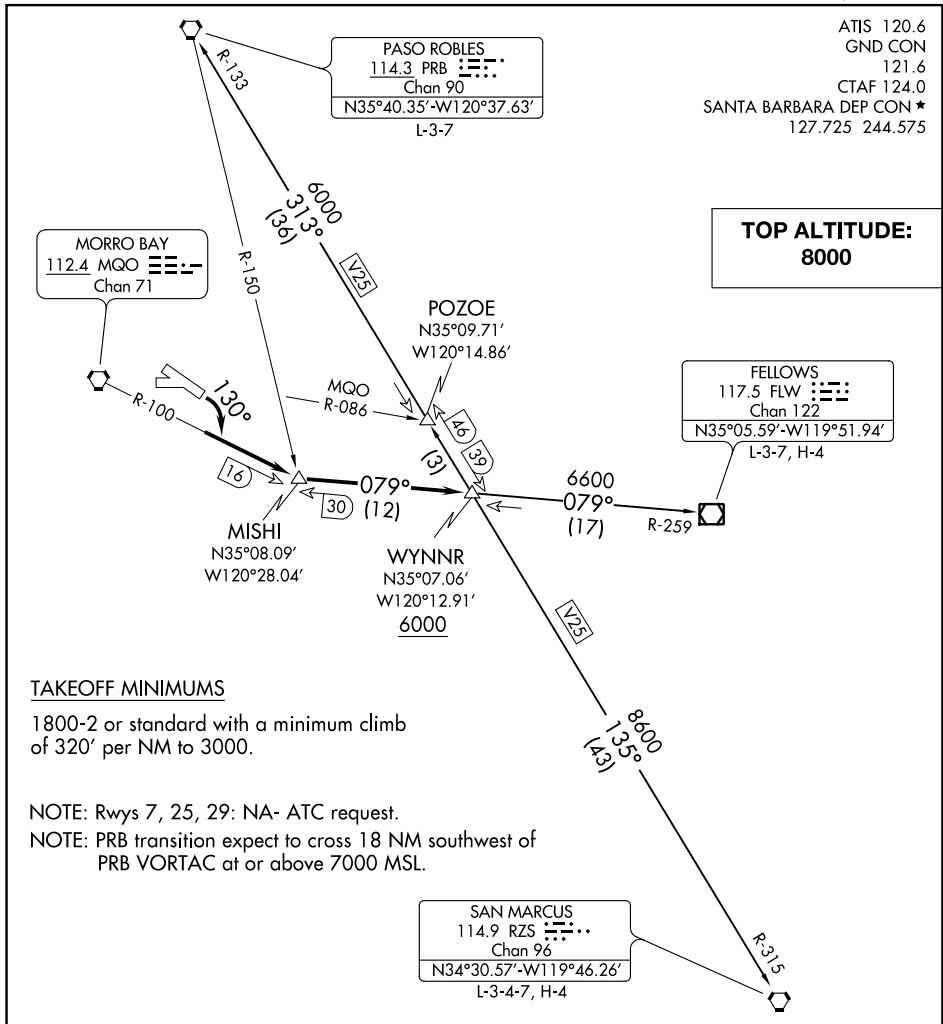


WYNNR THREE DEPARTURE

ATIS 120.6
GND CON 121.6
CTAF 124.0
SANTA BARBARA DEP CON ★
127.725 244.575

**TOP ALTITUDE:
8000**



TAKEOFF MINIMUMS

1800-2 or standard with a minimum climb of 320' per NM to 3000.

NOTE: Rws 7, 25, 29: NA- ATC request.

NOTE: PRB transition expect to cross 18 NM southwest of PRB VORTAC at or above 7000 MSL.

DEPARTURE ROUTE DESCRIPTION

TAKEOFF RUNWAY 11: Turn right heading 130° to intercept and proceed via MQO R-100 to MISHI INT, then via FLW R-259 to WYNNR INT. Thence via (transition) or (assigned route.)

FELLOWS TRANSITION (WYNNR3.FLW): From over WYNNR INT via FLW R-259 to FLW VOR/DME.

PASO ROBLES TRANSITION (WYNNR3.PRB): From over WYNNR INT via PRB R-133 to PRB VORTAC.

SAN MARCUS TRANSITION (WYNNR3.RZS): From over WYNNR INT via RZS R-315 to RZS VORTAC.

WYNNR THREE DEPARTURE