

NDB-B

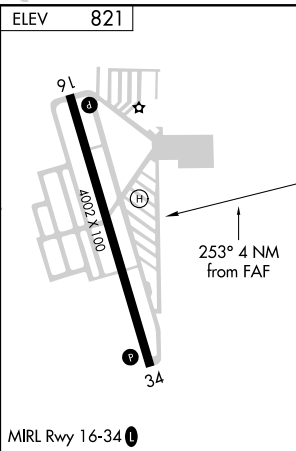
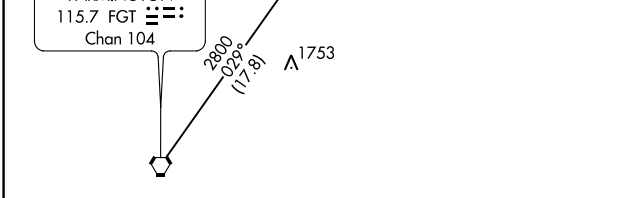
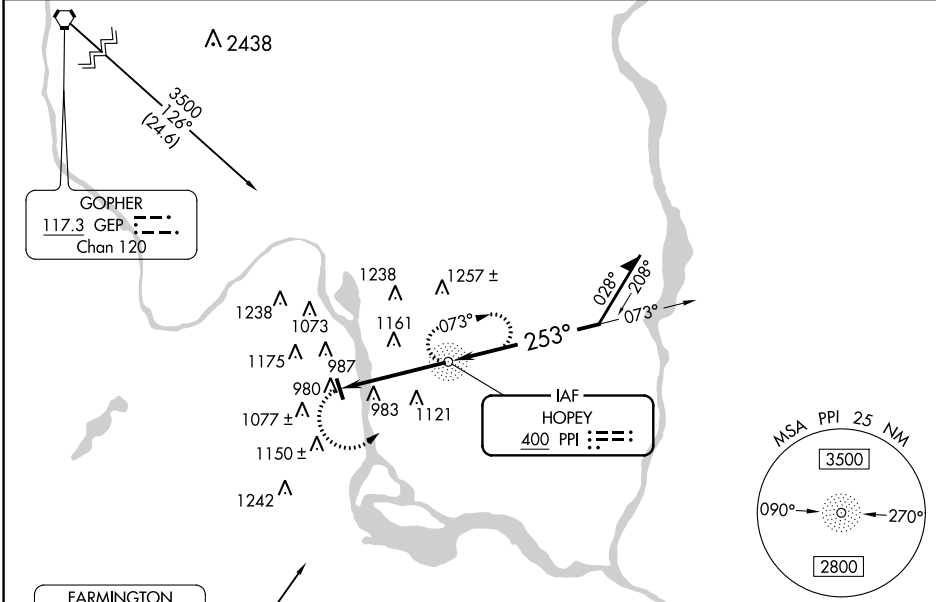
SOUTH ST PAUL MUNI-RICHARD E FLEMING FIELD (SGS)

NDB PPI 400	APP CRS 253°	Rwy Idg TDZE Apt Elev	N/A N/A 821
-----------------------	------------------------	-----------------------------	--

NA
When local altimeter setting not received, use Minneapolis Wold-Chamberlain Intl altimeter setting and increase all MDA 40 feet. Increase Cat C/D visibility ¼ mile.

MISSED APPROACH: Climbing left turn to 2700 direct PPI NDB and hold, continue climb-in-hold to 2700.

AWOS-3 119.425	MINNEAPOLIS APP CON 121.2 335.65	CLNC DEL 118.2	UNICOM 122.7 (CTAF) 0
--------------------------	--	--------------------------	---------------------------------



2700 PPI	PPI NDB	Remain within 10 NM
2600	253°	073°
2700		
4 NM		

CATEGORY	A	B	C	D
CIRCLING	1520-1 699 (700-1)	1540-1 719 (800-1)	1540-2 719 (800-2)	1620-2½ 799 (800-2½)

FAF to MAP 4 NM					
Knots	60	90	120	150	180
Min:Sec	4:00	2:40	2:00	1:36	1:20

NDB-B

NC-1, 28 FEB 2019 to 28 MAR 2019

NC-1, 28 FEB 2019 to 28 MAR 2019