

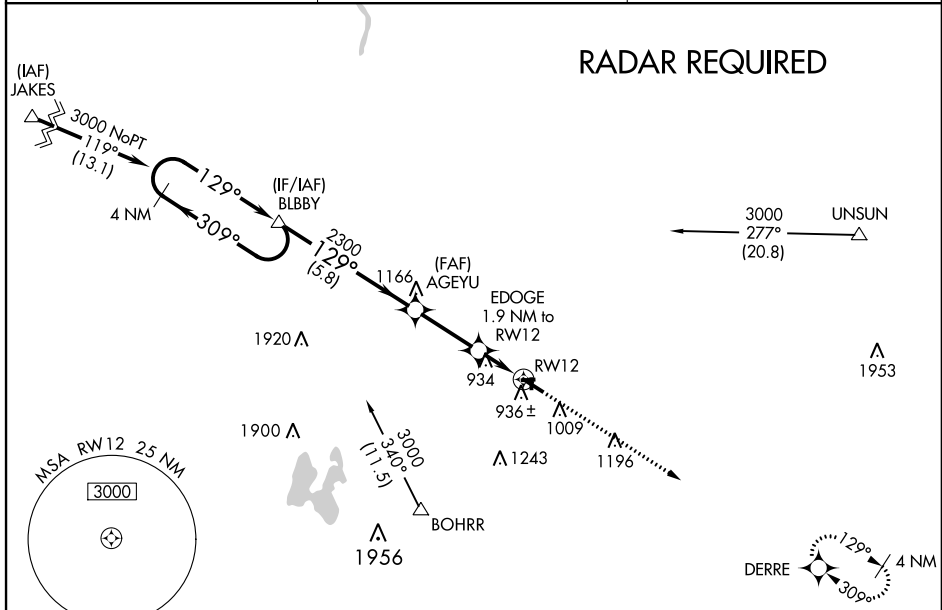
WAAS CH 53326 W12A	APP CRS 129°	Rwy Idg TDZE Apt Elev	4763 800 800
--	------------------------	-----------------------------	---

RNAV (GPS) RWY 12

HASTINGS (9D9)

<p>▽ NA</p> <p>Circling NA to Rwy 9, 18, 27 and 36. Baro-VNAV NA. DME/DME RNP-0.3 NA. Use Grand Rapids altimeter setting; when not received, use Ionia altimeter setting: increase LPV DA to 1102 feet; increase LNAV/VNAV DA to 1260 feet and all visibilities $\frac{1}{8}$ SM; increase all MDA 20 feet, and LNAV visibility Cat C $\frac{1}{8}$ SM.</p>	<p>MISSED APPROACH: Climb to 3000 direct DERRE and hold.</p>
--	--

<p>GRAND RAPIDS ASOS 118.725</p>	<p>GRAND RAPIDS APP CON * 128.4 257.6</p>	<p>UNICOM 123.075 (CTAF) 0</p>
---	--	---



<p>4 NM Holding Pattern</p> <p>VGSI and RNAV glidepath not coincident (VGSI Angle 4.00/TCH 34).</p> <p>3000 DERRE</p> <p>129° to RWY 12</p> <p>*LNAV only</p> <p>GP 3.00° TCH 40</p> <p>5.8 NM 2.7 NM 1.9 NM</p>				
CATEGORY	A	B	C	D
LPV DA	1087-1 287 (300-1)			NA
LNAV/VNAV DA	1245-1 $\frac{1}{8}$ 445 (500-1 $\frac{1}{8}$)			NA
LNAV MDA	1240-1	440 (500-1)	1240-1 $\frac{1}{4}$ 440 (500-1 $\frac{1}{4}$)	NA
C CIRCLING	1380-1 580 (600-1)	1420-1 620 (700-1)	1440-1 $\frac{3}{4}$ 640 (700-1 $\frac{3}{4}$)	NA

MIRL Rwy 12-30 0
REIL Rwy 12 and 30 0

EC-1, 28 FEB 2019 to 28 MAR 2019

EC-1, 28 FEB 2019 to 28 MAR 2019