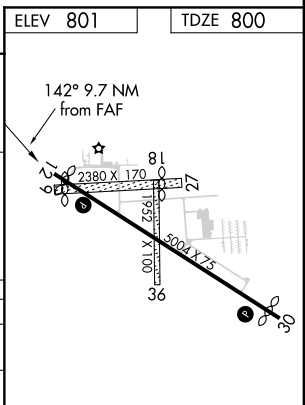
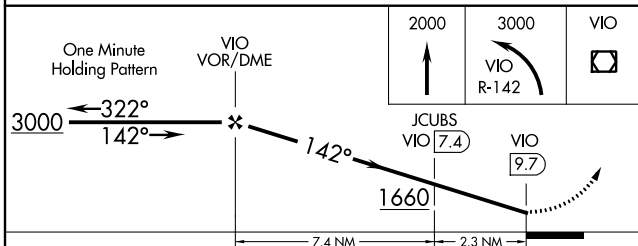
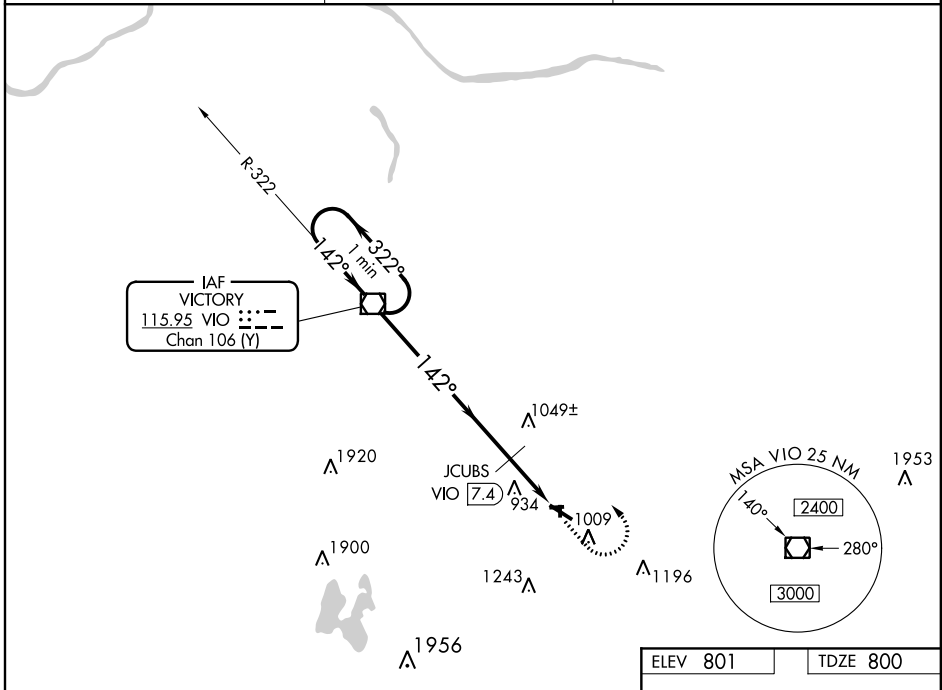


VOR/DME VIO <b>115.95</b> Chan <b>106 (Y)</b>	APP CRS <b>142°</b>	Rwy Idg <b>4763</b> TDZE <b>800</b> Apt Elev <b>801</b>
---	------------------------	---

# VOR RWY 12

HASTINGS (9D9)

<p><b>▼</b> Helicopter visibility reduction below 3/4 SM NA. Use Grand Rapids altimeter setting; when not received, use Ionia altimeter setting and increase all MDA 20 feet. Increase JCUBS DME minimums S-12 Cat C visibility 1/8 mile. Circling NA to Rwy 9, 18, 27, 36.</p>	<p><b>MISSED APPROACH:</b> Climb to 2000, then climbing left turn to 3000 on VOR/DME R-142 to VIO VOR/DME and hold.</p>	
<p>GRAND RAPIDS ASOS <b>118.725</b></p>	<p>GRAND RAPIDS APP CON ★ <b>128.4 257.6</b></p>	<p>UNICOM <b>123.075 (CTAF) ①</b></p>



CATEGORY	A	B	C	D
S-12	1660-1 860 (900-1)	1660-1¼ 860 (900-1¼)	1660-2½ 860 (900-2½)	NA
CIRCLING	1660-1 859 (900-1)	1660-1¼ 859 (900-1¼)	1660-2½ 859 (900-2½)	NA
JCUBS DME MINIMUMS				
S-12	1340-1	540 (600-1)	1340-1½ 540 (600-1½)	NA
CIRCLING	1380-1 579 (600-1)	1400-1 599 (600-1)	1420-1¾ 619 (700-1¾)	NA

ELEV 801	TDZE 800
MIRL Rwy 12-30 ①	
REIL Rwy 12 and 30 ①	
FAF to MAP 9.7 NM	
Knots	60 90 120 150 180
Min:Sec	9:42 6:28 4:51 3:53 3:14

EC-1, 28 FEB 2019 to 28 MAR 2019

EC-1, 28 FEB 2019 to 28 MAR 2019