

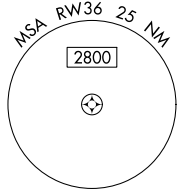
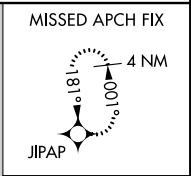
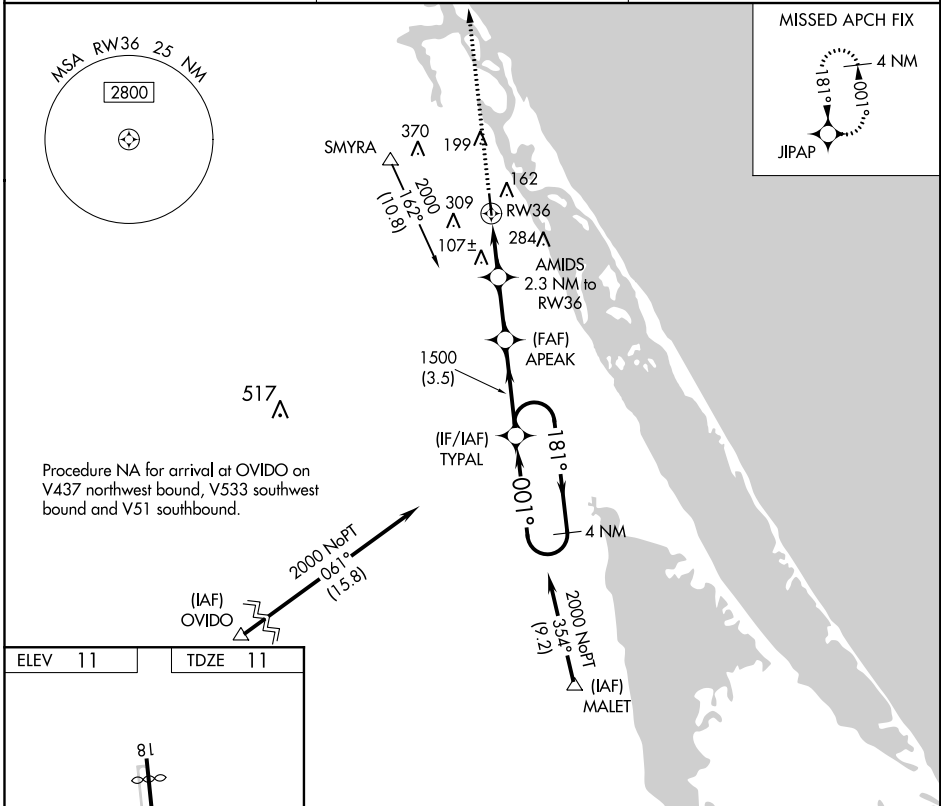
APP CRS	Rwy Idg	<b>4160</b>
<b>001°</b>	TDZE	<b>11</b>
	Apt Elev	<b>11</b>

# RNAV (GPS) RWY 36

MASSEY RANCH AIRPARK (X5)  $\emptyset$

<b>V</b> DME/DME RNP-0.3 NA. Procedure NA at night. Use Daytona Beach altimeter setting. Helicopter visibility reduction below 1 SM NA.	MISSED APPROACH: Climb to 2000 direct JIPAP and hold.
---	---

DAYTONA BEACH ASOS-3 <b>132.875</b>	DAYTONA APP CON <b>125.35 322.3</b>	UNICOM <b>122.7 (CTAF)</b>
--	--	-------------------------------

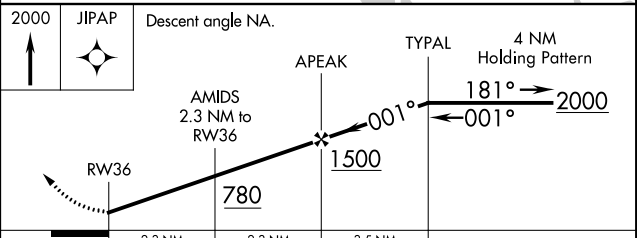
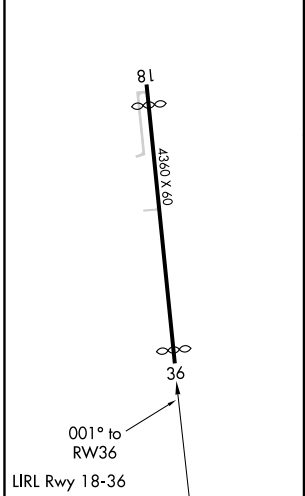


Procedure NA for arrival at OVIDO on V437 northwest bound, V533 southwest bound and V51 southbound.

SE-3: 28 FEB 2019 to 28 MAR 2019

SE-3: 28 FEB 2019 to 28 MAR 2019

ELEV 11	TDZE 11
---------	---------



CATEGORY	A	B	C	D
LNAV MDA	400-1	389 (400-1)	400-1 $\frac{1}{8}$ 389 (400-1 $\frac{1}{8}$ )	NA
<b>C</b> CIRCLING	500-1 489 (500-1)	660-1 649 (700-1)	720-2 709 (800-2)	NA