

# DOVER FIVE DEPARTURE (RNAV)

SE-4, 28 MAR 2019 to 25 APR 2019

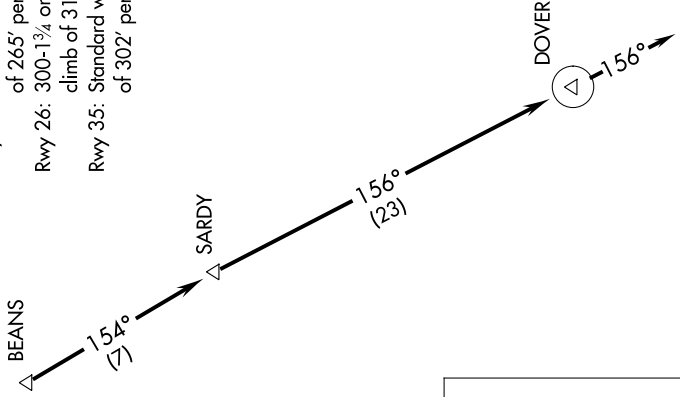
AUGUSTA TOWER ★  
118.7 (CTAF) 239.3  
AUGUSTA DEP CON ★  
126.8 270.3  
CLINC DEL  
118.2



### TAKEOFF MINIMUMS

- Rwy 8: Standard with minimum climb of 394' per NM to 2500.
- Rwy 17: Standard with minimum climb of 265' per NM to 2400.
- Rwy 26: 300-1<sup>3</sup>/<sub>4</sub> or standard with minimum climb of 312' per NM to 2000.
- Rwy 35: Standard with minimum climb of 302' per NM to 2500.

- NOTE: DME/DME/IRU or GPS Required.
- NOTE: RADAR required for non-GPS equipped aircraft.
- NOTE: RNAV 1.
- NOTE: For turbojet aircraft during Masters Golf Tournament week.
- NOTE: Do not exceed 250K until advised by ATC.



### DEPARTURE ROUTE DESCRIPTION

TAKEOFF RWYS 8, 17, 26, 35: Climb heading assigned by ATC for vectors to BEANS, then on depicted route to DOVER, then on heading 156° for RADAR vectors. Thence . . .

. . . maintain altitude assigned by ATC. Expect clearance to filed altitude/flight level within 10 minutes after departure.

NOTE: Chart not to scale.

# DOVER FIVE DEPARTURE (RNAV)

SE-4, 28 MAR 2019 to 25 APR 2019