


LOC I-MZX <b>111.75</b>	APP CRS <b>172°</b>	Rwy Idg TDZE Apt Elev	<b>8001</b> <b>144</b> <b>144</b>
----------------------------	------------------------	-----------------------------	---

# ILS or LOC RWY 17

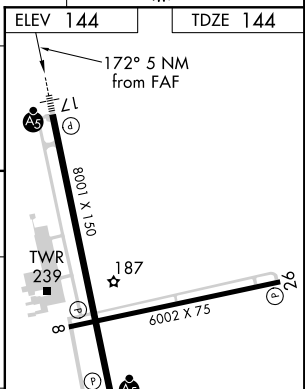
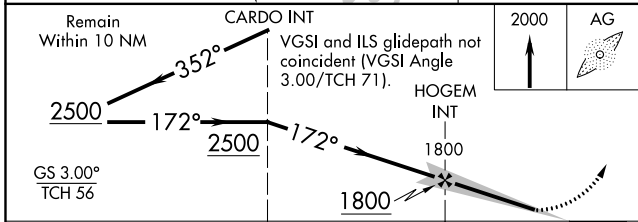
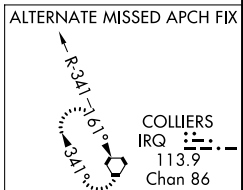
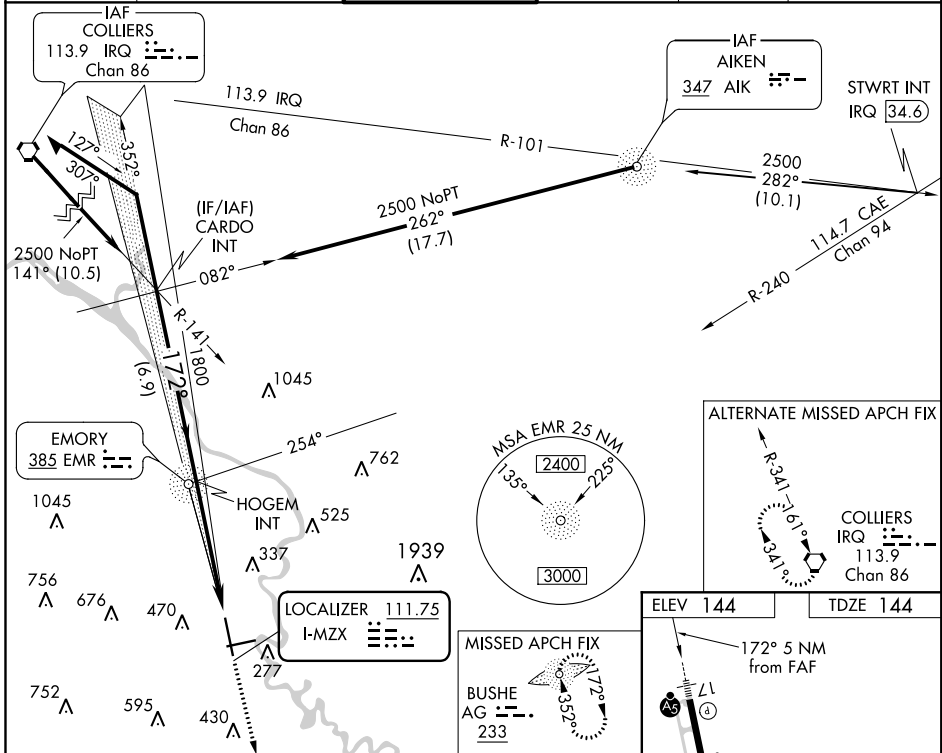
AUGUSTA RGNL AT BUSH FIELD (AGS)

**ASR** Night Landing: Rwy 8, operational VGSi required, remain on or above VGSi glidepath until threshold. ADF required. When local altimeter setting not received, use Daniel Field altimeter setting and increase all DA 55 feet and all MDA 60 feet; increase S-LOC 17 Cats C/D visibility to RVR 5500 and Circling Cats C/D visibility ¼ mile. For inop MALS R, increase S-LOC 17 Cats C/D visibility to 1%. For inop MALS R when using Daniel Field altimeter setting, increase S-LOC 17 Cats C/D visibility to 1½. \* RVR 1800 authorized with use of FD or AP or HUD to DA (NA when using Daniel Field altimeter setting).

**MALS R** 

**MISSED APPROACH:** Climb to 2000 direct BUSHE LOM and hold.

ATIS <b>132.75</b>	AUGUSTA APP CON * <b>126.8 270.3</b>	AUGUSTA TOWER * <b>118.7 (CTAF) 0 239.3</b>	GND CON <b>121.9 348.6</b>	CLNC DEL <b>121.9</b>	UNICOM <b>122.95</b>
-----------------------	---	--	-------------------------------	--------------------------	-------------------------



CATEGORY	A	B	C	D
S-ILS 17*	344/24 200 (200-½)			
S-LOC 17	620/24 476 (500-½)	620/50 476 (500-1)		
CIRCLING	780-1 636 (700-1)	780-1¾ 636 (700-1¾)	780-2 636 (700-2)	

FAF to MAP 5 NM					
Knots	60	90	120	150	180
Min:Sec	5:00	3:20	2:30	2:00	1:40

SE-4, 28 MAR 2019 to 25 APR 2019

SE-4, 28 MAR 2019 to 25 APR 2019