


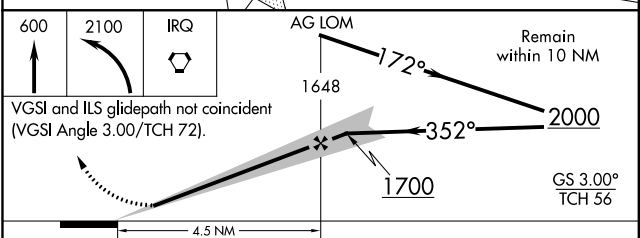
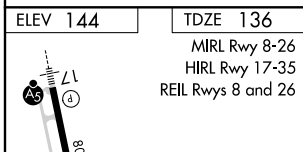
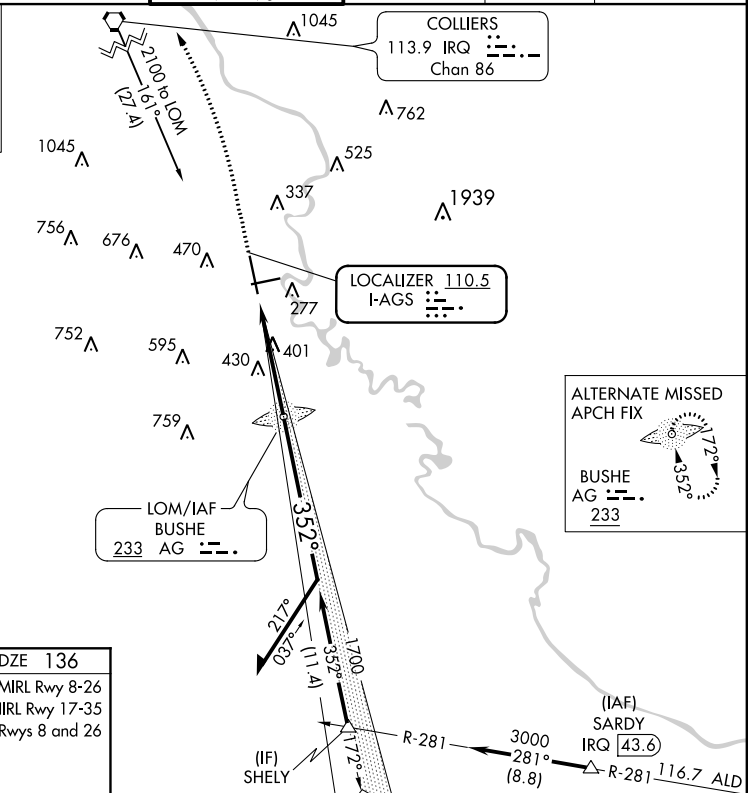
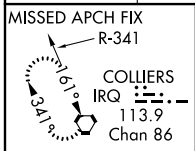
LOC I-AGS <b>110.5</b>	APP CRS <b>352°</b>	Rwy Idg 8001	TDZE 136
		Apt Elev 144	

**ILS or LOC RWY 35**  
AUGUSTA RGNL AT BUSH FIELD (AGS)

**ASR** When local altimeter setting not received, use Daniel Field altimeter setting and increase all DA 55 feet and all MDA 60 feet; increase S-LOC 35 and Circling Cats C/D visibility ¼ mile. Night Landing: Rwy 8, operational VGSI required, remain on or above VGSI glidepath until threshold. \*RVR 1800 authorized with the use of FD or AP or HUD to DA.

**MALSR**  **MISSED APPROACH:** Climb to 600 then climbing left turn to 2100 direct IRQ VORTAC and hold.

ATIS <b>132.75</b>	AUGUSTA APP CON * <b>126.8 270.3</b>	AUGUSTA TOWER * <b>118.7 (CTAF) 0 239.3</b>	GND CON <b>121.9 348.6</b>	CLNC DEL <b>121.9</b>	UNICOM <b>122.95</b>
-----------------------	---	--	-------------------------------	--------------------------	-------------------------



FAF to MAP 4.5 NM					
Knots	60	90	120	150	180
Min:Sec	4:30	3:00	2:15	1:48	1:30
CATEGORY	A	B	C	D	
S-ILS 35*	336/24		200 (200-½)		
S-LOC 35	660/24	524 (600-½)		660/55	524 (600-1)
CIRCLING	780-1	636 (700-1)		780-1¾ 636 (700-1¾)	780-2 636 (700-2)

SE-4, 28 MAR 2019 to 25 APR 2019

SE-4, 28 MAR 2019 to 25 APR 2019