

KAOLN SIX DEPARTURE (RNAV)

SE-4, 28 MAR 2019 to 25 APR 2019

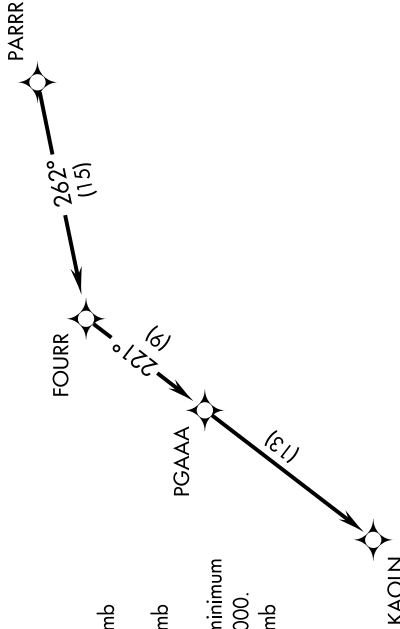
AUGUSTA TOWER ★
118.7 (CTAF) 239.3
AUGUSTA DEP CON ★
126.8 270.3
CINC DEL
118.2

- NOTE: DME/DME/IRU or GPS required.
- NOTE: RADAR required for non-GPS equipped aircraft.
- NOTE: RNAV 1.
- NOTE: For use during Masters Golf Tournament week only.
- NOTE: Do not exceed 250K until advised by ATC.

TAKEOFF MINIMUMS

- Rwy 8: Standard with minimum climb of 394' per NM to 2500.
- Rwy 17: Standard with minimum climb of 265' per NM to 2400.
- Rwy 26: 300-1/4 or standard with minimum climb of 312' per NM to 2000.
- Rwy 35: Standard with minimum climb of 302' per NM to 2500.

TOP ALTITUDE: ASSIGNED BY ATC



NOTE: Chart not to scale.

DEPARTURE ROUTE DESCRIPTION

TAKEOFF RWYS 8, 17, 26, 35: Climb on assigned heading for RADAR vectors to PARRR, then on depicted route to KAOLN, thence. . . .

. . . maintain altitude assigned by ATC. Expect clearance to filed altitude/flight level within 10 minutes after departure.

SE-4, 28 MAR 2019 to 25 APR 2019

KAOLN SIX DEPARTURE (RNAV)