

WAAS CH <b>77504</b> <b>W17A</b>	APP CRS <b>172°</b>	Rwy Idg TDZE <b>144</b> Apt Elev <b>144</b>	<b>8001</b>
--	------------------------	---	-------------

# RNAV (GPS) RWY 17

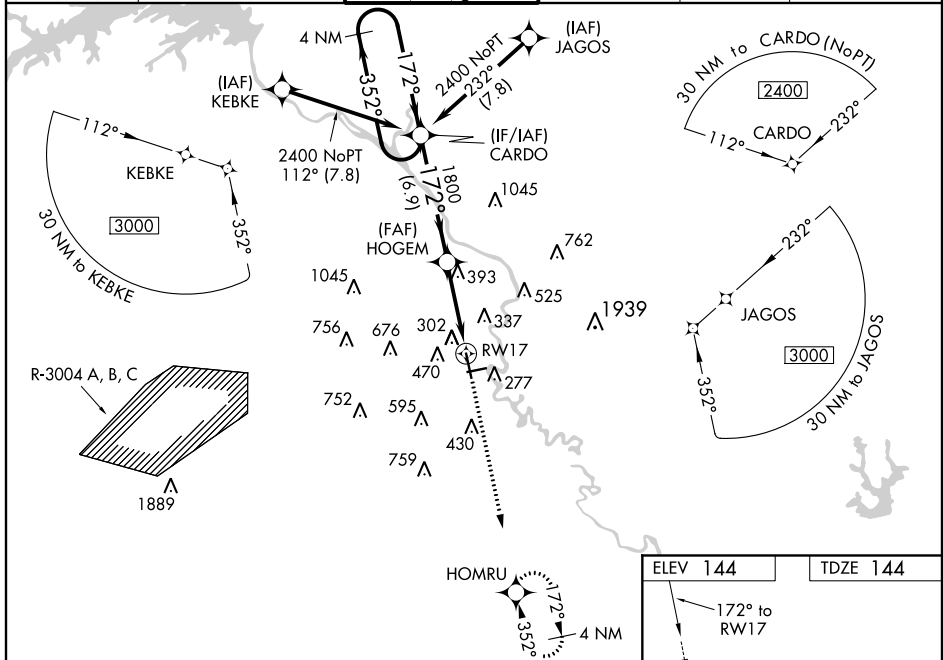
AUGUSTA RGNL AT BUSH FIELD (AGS)

**▼** Night Landing: Rwy 8, operational VGSI required, remain on or above VGSI glidepath until threshold. For uncompensated Baro-VNAV systems, LNAV/VNAV NA below -8°C (18°F) or above 42°C (107°F). DME/DME RNP-0.3 NA. When local altimeter setting not received, use Daniel Field altimeter setting and increase all DA 55 feet and all MDA 60 feet; increase LNAV/VNAV all Cats visibility ¼ mile, LNAV and Circling Cats C/D visibility ¼ mile. Baro-VNAV and VDP NA when using Daniel Field altimeter setting. For inop MALSAR, increase LNAV Cats C/D visibility to 1½. For inop MALSAR when using Daniel Field altimeter setting, increase LNAV/VNAV all Cats visibility to 1½ mile and LNAV Cats C/D visibility to 1½ mile. \*\*RVR 1800 authorized with use of FD or AP or HUD to DA, NA when using Daniel Field altimeter setting.

**MALSAR**

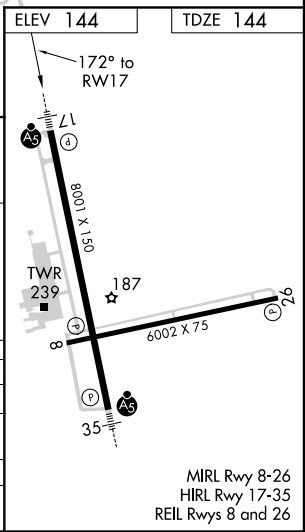
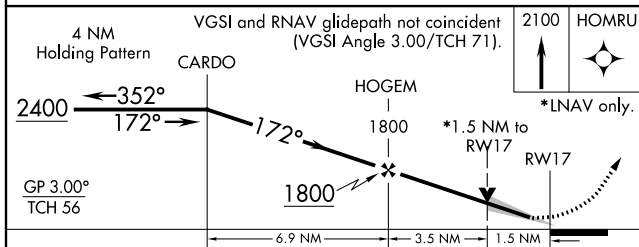
**MISSED APPROACH:**  
Climb to 2100 direct HOMRU and hold.

ATIS <b>132.75</b>	AUGUSTA APP CON * <b>126.8 270.3</b>	AUGUSTA TOWER * <b>118.7 (CTAF) 0 239.3</b>	GND CON <b>121.9 348.6</b>	CLNC DEL <b>121.9</b>	UNICOM <b>122.95</b>
-----------------------	---	--	-------------------------------	--------------------------	-------------------------



SE-4, 28 MAR 2019 to 25 APR 2019

SE-4, 28 MAR 2019 to 25 APR 2019



CATEGORY	A	B	C	D
LPV DA**		344/24	200 (200-½)	
LNAV/VNAV DA		518/40	374 (400-¾)	
LNAV MDA	700/24	556 (600-½)	700/60	556 (600-1¼)
CIRCLING	780-1	636 (700-1)	780-1¾	780-2
			636 (700-1¾)	636 (700-2)