

| | | |
|-------------|----------|-------------|
| APP CRS | Rwy Idg | 6002 |
| 262° | TDZE | 139 |
| | Apt Elev | 144 |

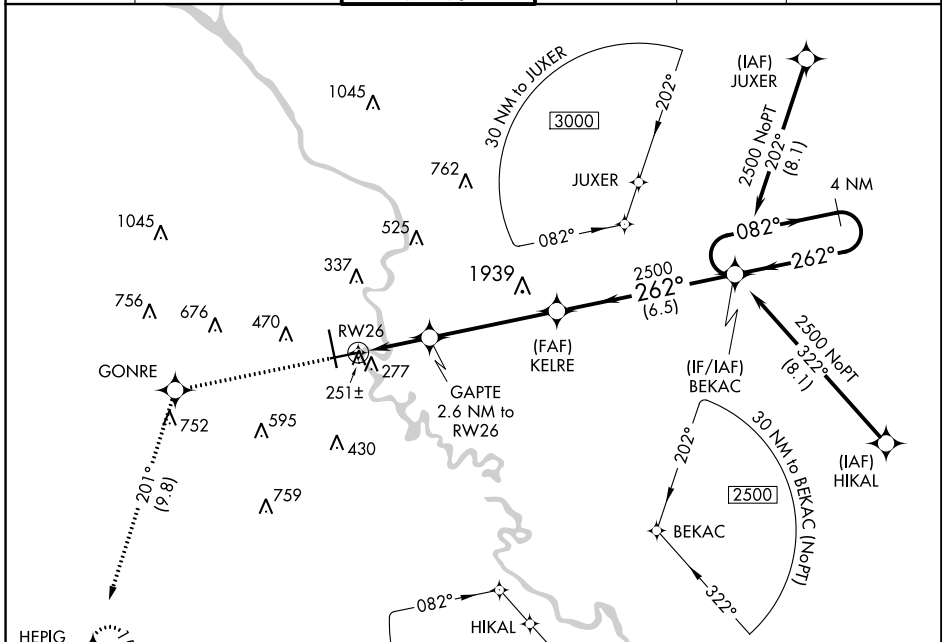
RNAV (GPS) RWY 26

AUGUSTA RGNL AT BUSH FIELD (AGS)

▼ Night Landing: Rwy 8, operational VGSI required, remain on or above VGSI glidepath until threshold. DME/DME RNP-0.3 NA. Helicopter visibility reduction below 3/4 SM NA. VDP NA with Daniel Field altimeter setting. When local altimeter setting not received, use Daniel Field altimeter setting and increase all MDA 60 feet; increase LNAV and Circling Cats C/D visibility 1/4 mile.

▲ MISSED APPROACH: Climb to 3000 direct GONRE and on track 201° to HEPIG and hold.

| | | | | | |
|---------------|--------------------|-----------------------------|--------------------|--------------|---------------|
| ATIS | AUGUSTA APP CON * | AUGUSTA TOWER * | GND CON | CLNC DEL | UNICOM |
| 132.75 | 126.8 270.3 | 118.7 (CTAF) 0 239.3 | 121.9 348.6 | 121.9 | 122.95 |



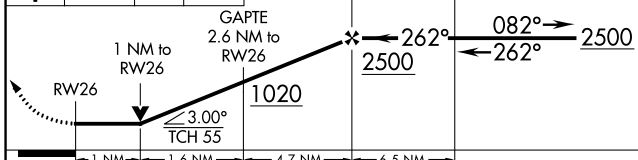
SE-4, 28 MAR 2019 to 25 APR 2019

SE-4, 28 MAR 2019 to 25 APR 2019

| | | | |
|------|-----|------|-----|
| ELEV | 144 | TDZE | 139 |
|------|-----|------|-----|



| | | | | |
|------|---------|-------|------------------------------------------------------------------|--|
| 3000 | GONRE | HEPIG | VGSI and descent angles not coincident (VGSI Angle 3.00/TCH 64). | |
| ↑ | tr 201° | ◆ | 4 NM Holding Pattern | |



| CATEGORY | A | B | C | D |
|----------|-------------------|---|---------------------------|-------------------|
| LNAV MDA | 520-1 381 (400-1) | | 520-1 381 (400-1 1/8) | |
| CIRCLING | 780-1 636 (700-1) | | 780-1 3/4 636 (700-1 3/4) | 780-2 636 (700-2) |

| | | | |
|------|-----|------|-----|
| ELEV | 144 | TDZE | 139 |
|------|-----|------|-----|

MRL Rwy 8-26
HIRL Rwy 17-35
REIL Rwy 8 and 26