

WAAS CH 97303 W35A	APP CRS 352°	Rwy Idg TDZE 137 Apt Elev 146	8001
--	------------------------	---	-------------

RNAV (GPS) RWY 35

AUGUSTA RGNL AT BUSH FIELD (AGS)

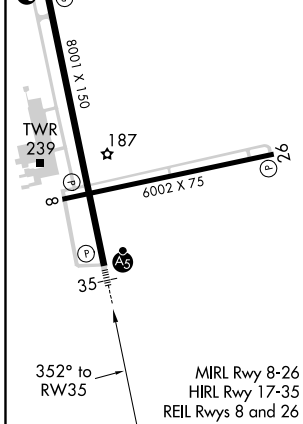
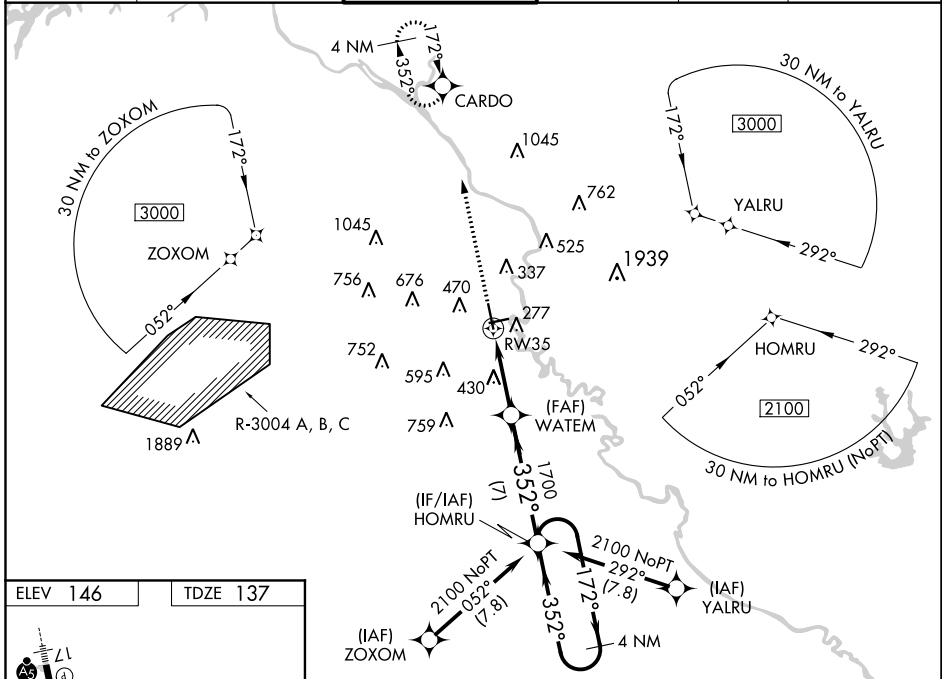
⚠ For uncompensated Baro-VNAV systems, LNAV/VNAV NA below -8°C (18°F) or above 43°C (109°F). Baro-VNAV and VDP NA when using Daniel Field altimeter setting. DME/DME RNP-0.3 NA. When local altimeter setting not received, use Daniel Field altimeter setting and increase all DA 55 feet and all MDA 60 feet; increase LNAV/VNAV all Cats and Circling Cats C/D visibility 1/2 SM, LNAV Cats C/D visibility 1/3 SM. For inop ALS, increase LNAV Cats C/D visibility to 1 1/2 SM. For inop ALS when using Daniel Field altimeter setting, increase LPV all Cats visibility to RVR 5000, and LNAV Cats C/D visibility to 1 1/2 SM.

ASR

MALSRL

MISSED APPROACH:
Climb to 2400 direct CARDO and hold.

ATIS 132.75	AUGUSTA APP CON ★ 126.8 270.3	AUGUSTA TOWER ★ 118.7 (CTAF) 0 239.3	GND CON 121.9 348.6	CLNC DEL 121.9	UNICOM 122.95
-----------------------	---	--	-------------------------------	--------------------------	-------------------------



2400 **CARD** VGSi and RNAV glidepath not coincident (VGSi Angle 3.00/TCH 72). 4 NM Holding Pattern

*LNAV only.

WATEM 1700 1700 2100

RW35 1.5 NM to RW35

GP 3.00° TCH 56

CATEGORY	A	B	C	D
LPV DA	387/24		250 (300-1/2)	
LNAV/VNAV DA	657/60		520 (600-1 1/4)	
LNAV MDA	680/24	543 (600-1/2)	680/60	543 (600-1 1/4)
CIRCLING	780-1	634 (700-1)	780-1 3/4 634 (700-1 3/4)	780-2 634 (700-2)

SE-4, 28 MAR 2019 to 25 APR 2019

SE-4, 28 MAR 2019 to 25 APR 2019