

APP CRS	Rwy Idg	6002
082°	TDZE	137
	Apt Elev	144

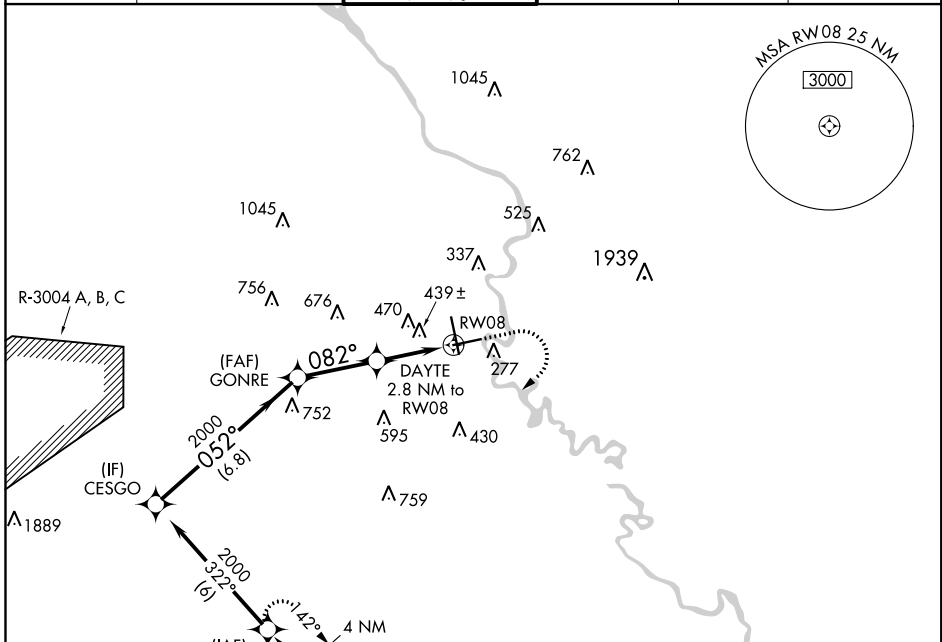
RNAV (GPS) Y RWY 8

AUGUSTA RGNL AT BUSH FIELD (AGS)

▼ Night Landing: Rwy 8, operational VGSI required, remain on or above VGSI glidepath until threshold. DME/DME RNP-0.3 NA. Helicopter visibility reduction below 1 SM NA. When local altimeter setting not received, use Daniel Field altimeter setting and increase all MDA 60 feet; increase LNAV Cats C/D visibility 1/8 mile and Circling Cats C/D visibility 1/4 mile.

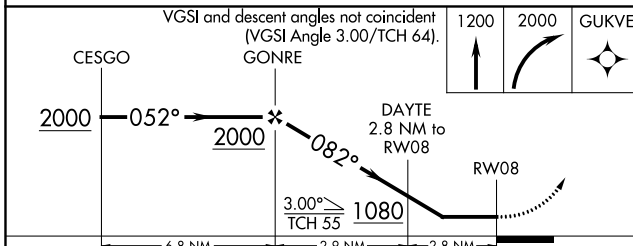
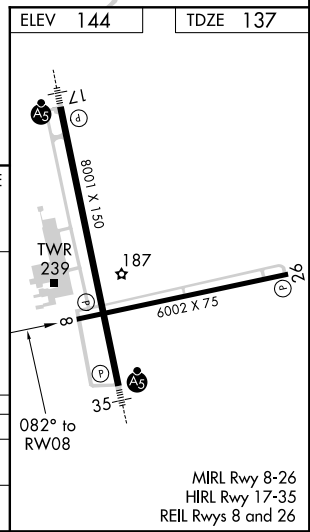
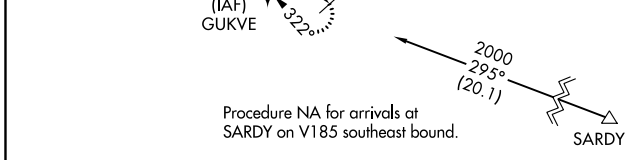
▲ ASR MISSED APPROACH: Climb to 1200 then climbing right turn to 2000 direct GUKVE and hold.

ATIS	AUGUSTA APP CON ★	AUGUSTA TOWER ★	GND CON	CLNC DEL	UNICOM
132.75	126.8 270.3	118.7 (CTAF) 0 239.3	121.9 348.6	121.9	122.95



SE-4, 28 MAR 2019 to 25 APR 2019

SE-4, 28 MAR 2019 to 25 APR 2019



CATEGORY	A	B	C	D
LNAV MDA	700-1	563 (600-1)	700-1 1/8	563 (600-1 1/8)
CIRCLING	780-1	636 (700-1)	780-1 3/4	780-2
			636 (700-1 3/4)	636 (700-2)