

WAAS CH 90328 W08A	APP CRS 082°	Rwy Idg TDZE Apt Elev	6002 137 144
--	------------------------	-----------------------------	---

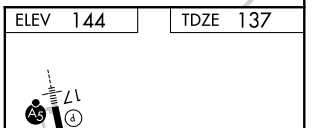
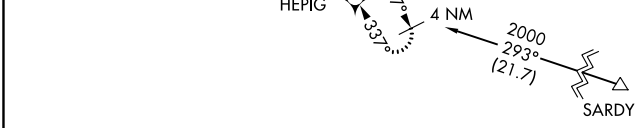
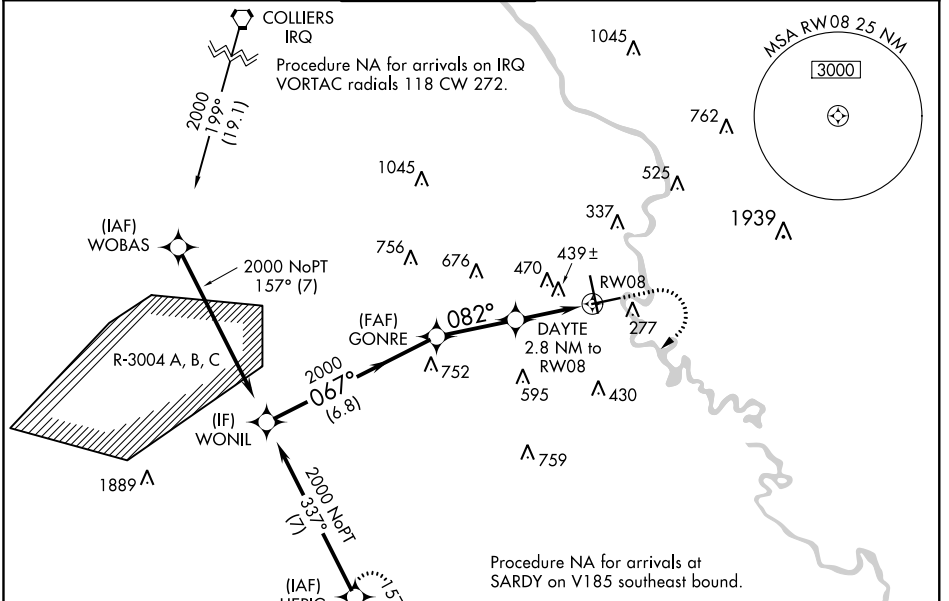
RNAV (GPS) Z RWY 8

AUGUSTA RGNL AT BUSH FIELD (AGS)

ASR Baro-VNAV NA when using Daniel Field altimeter setting. For uncompensated Baro-VNAV systems, LNAV/VNAV NA below -8°C (18°F) or above 42°C (107°F). Night Landing: Rwy 8, operational VGSI required, remain on or above VGSI glidepath until threshold. DME/DME RNP-0.3 NA. Helicopter visibility reduction below 1 SM NA. When local altimeter setting not received, use Daniel Field altimeter setting and increase all DA 55 feet and all MDA 60 feet; increase LPV all Cats and LNAV Cats C/D visibility 1/8 mile, LNAV/VNAV all Cats and Circling Cats C/D visibility 1/4 mile.

MISSED APPROACH: Climb to 1200 then climbing right turn to 2000 direct HEPIG and hold.

ATIS 132.75	AUGUSTA APP CON ★ 126.8 270.3	AUGUSTA TOWER ★ 118.7 (CTAF) 0 239.3	GND CON 121.9 348.6	CLNC DEL 121.9	UNICOM 122.95
-----------------------	---	--	-------------------------------	--------------------------	-------------------------



		1200	2000	HEPIG
		↑	↷	✧
				*LNAV only.
CATEGORY	A	B	C	D
LPV DA		646-1¾	509 (500-1¾)	
LNAV/VNAV DA		774-2¼	637 (700-2¼)	
LNAV MDA	700-1	563 (600-1)	700-1½	563 (600-1½)
CIRCLING	780-1	636 (700-1)	780-1¾	780-2 636 (700-2)

MIRL Rwy 8-26
HIRL Rwy 17-35
REIL Rwy 8 and 26

SE-4, 28 MAR 2019 to 25 APR 2019

SE-4, 28 MAR 2019 to 25 APR 2019