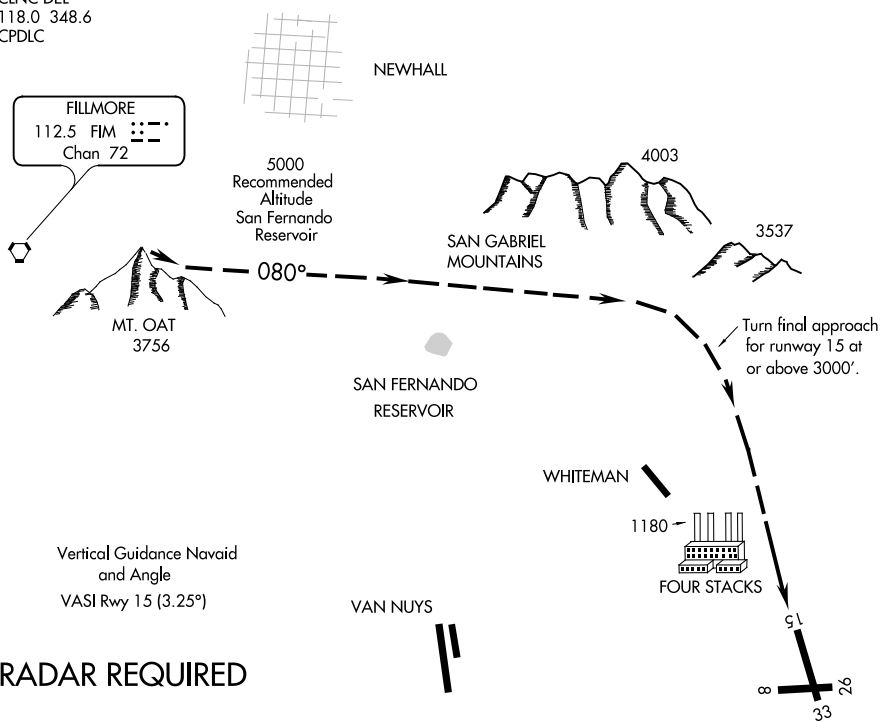


# FOUR STACKS VISUAL RWY 15

BOB HOPE (BUR)  
BURBANK, CALIFORNIA

D-ATIS 134.5  
 SOCAL APP CON  
 134.2 338.2  
 BURBANK TOWER  
 118.7 254.3  
 GND CON  
 123.9 348.6  
 CLNC DEL  
 118.0 348.6  
 CPDLC



Vertical Guidance Navaid  
 and Angle  
 VASI Rwy 15 (3.25°)

## RADAR REQUIRED

Weather Minimums: 5500 feet ceiling  
 and 5 mile visibility.

1 2 3 4 5 6 7 8 9 10 11 12 13 14 15 16

### FOUR STACKS VISUAL APPROACH RWY 15

When Visual Approaches to Runway 15 are in progress, clearances will be given to aircraft from the Northwest thru Northeast utilizing the following phraseology:

"(IDENT) CLEARED FOR FOUR STACKS VISUAL  
 APPROACH TO RUNWAY 15."

# FOUR STACKS VISUAL RWY 15

34°12'N-118°22'W

BURBANK, CALIFORNIA  
BOB HOPE (BUR)