

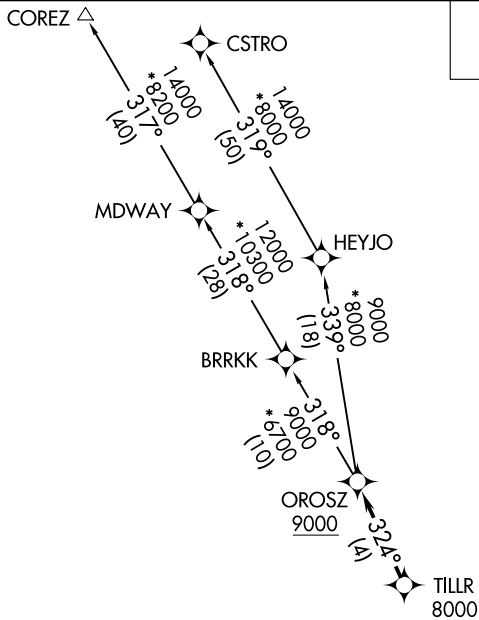
# OROSZ TWO DEPARTURE (RNAV)

AL-67 (FAA)

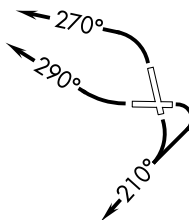
BOB HOPE (BUR)  
BURBANK, CALIFORNIA

**TOP ALTITUDE:  
FL230**

CINC DEL  
118.0 348.6  
CPDLC  
SOCAL DEP CON  
124.6 298.85



NOTE: DME/DME/IRU or GPS required.  
 NOTE: RNAV 1.  
 NOTE: RADAR required.  
 NOTE: Maintain at or below 250K unless otherwise directed by ATC.



### TAKEOFF MINIMUMS

- Rwy 8: Standard with minimum climb of 420' per NM to 2500.
- Rwy 15: Standard with minimum climb of 340' per NM to 2100.
- Rwy 26: Standard with minimum climb of 380' per NM to 4800.
- Rwy 33: Standard with minimum climb of 460' per NM to 4900.

NOTE: Chart not to scale.



### DEPARTURE ROUTE DESCRIPTION

TAKEOFF RUNWAYS 8, 15: Climbing right turn heading 210° or as assigned by ATC, expect vectors to cross TILLR at or above 8000, then on track 324° to cross OROSZ at or above 9000, thence. . .

TAKEOFF RUNWAY 26: Climbing right turn heading 290° or as assigned by ATC, expect vectors to cross TILLR at or above 8000, then on track 324° to cross OROSZ at or above 9000, thence. . .

TAKEOFF RUNWAY 33: Climbing left turn heading 270° or as assigned by ATC, expect vectors to cross TILLR at or above 8000, then on track 324° to cross OROSZ at or above 9000, thence. . .

. . .on (transition) maintain FL230. Expect filed altitude 10 minutes after departure.

COREZ TRANSITION (OROSZ2.COREZ)

CSTRO TRANSITION (OROSZ2.CSTRO)

# OROSZ TWO DEPARTURE (RNAV)