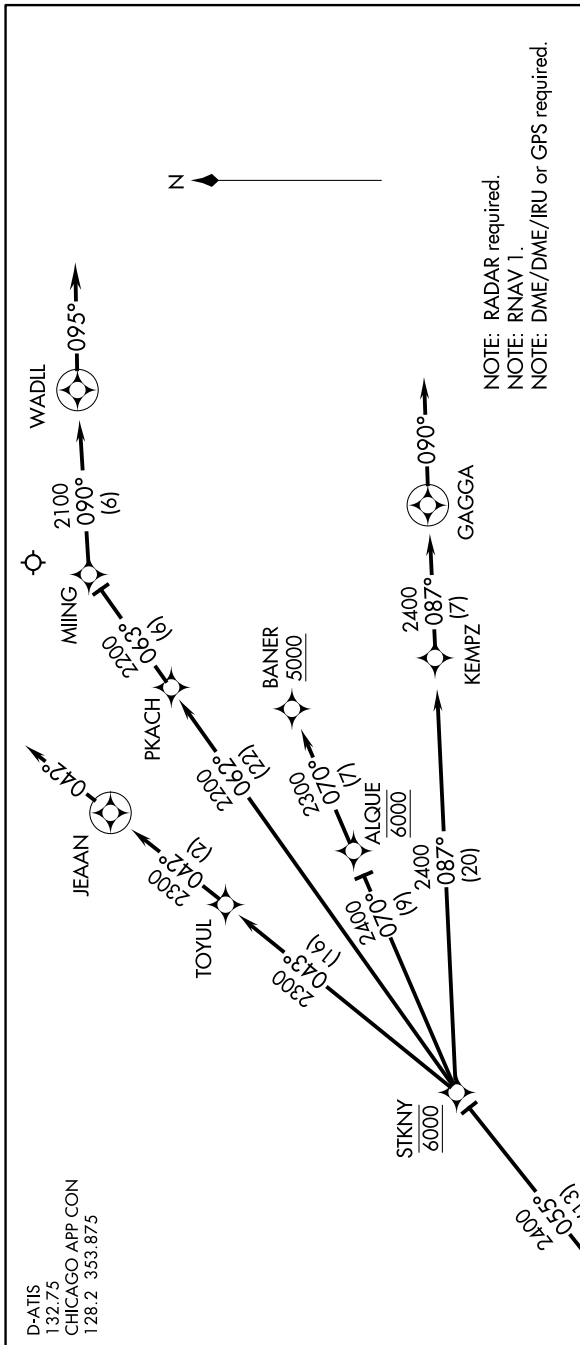


ENDEE FOUR ARRIVAL (RNAV) Arrival Routes

EC-3, 28 MAR 2019 to 25 APR 2019



NOTE: RADAR required.
 NOTE: RNAV 1.
 NOTE: DME/DME/IRU or GPS required.

ARRIVAL ROUTE DESCRIPTION

From ENDEE on track 055° to cross STKNY at 6000.
LANDING RWY 4R: From STKNY on track 070° to cross ALQUJE at 6000, then on track 070° to cross BANNER at or above 5000, then on assigned instrument approach procedure or RADAR vectors to final approach course.
LANDING RWY 13C: From STKNY on track 043° to TOYUL, then on track 042° to JEAAN, then on track 042°. Expect RADAR vectors to final approach course.
LANDING RWY 22L: From STKNY on track 062° to PKACH, then on track 063° to MIING, then on track 090° to WADIL, then on track 095°. Expect RADAR vectors to final approach course.
LANDING RWY 31C: From STKNY on track 087° to KEMPZ, then on track 087° to GAGGA, then on track 090°. Expect RADAR vectors to final approach course.

NOTE: Chart not to scale.

EC-3, 28 MAR 2019 to 25 APR 2019

ENDEE FOUR ARRIVAL (RNAV) Arrival Routes