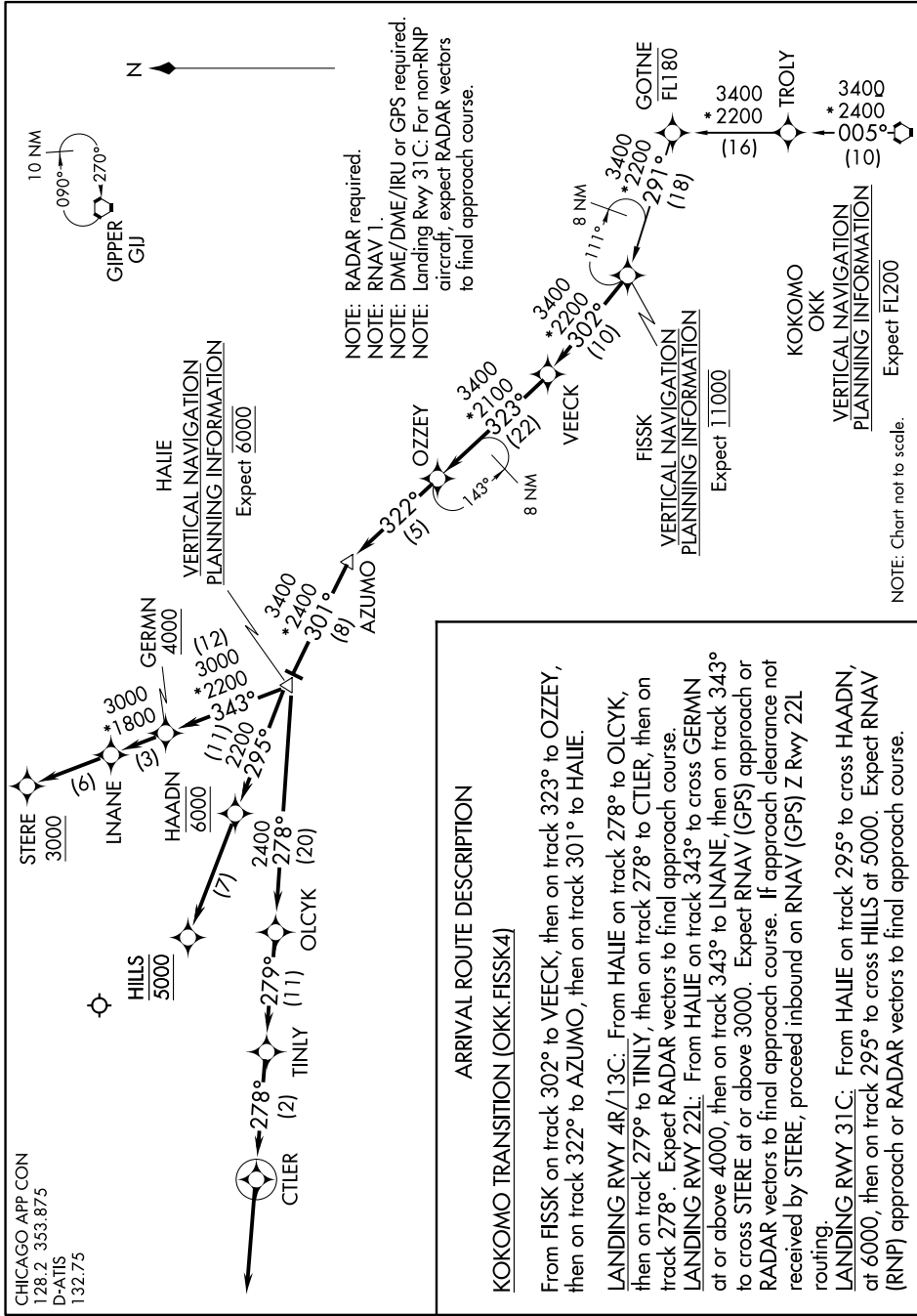


EC-3, 28 MAR 2019 to 25 APR 2019



ARRIVAL ROUTE DESCRIPTION

KOKOMO TRANSITION (OKK.FISSK4)

From FISSK on track 302° to VEECK, then on track 323° to OZZEY, then on track 322° to AZUMO, then on track 301° to HAALIE.

LANDING RWY 4R/13C: From HAALIE on track 278° to OLCCYK, then on track 279° to TINLY, then on track 278° to CTILER, then on track 278°. Expect RADAR vectors to final approach course.

LANDING RWY 22L: From HAALIE on track 343° to cross GERMN at or above 4000, then on track 343° to LANE, then on track 343° to cross STERE at or above 3000. Expect RNAV (GPS) approach or RADAR vectors to final approach course. If approach clearance not received by STERE, proceed inbound on RNAV (GPS) Z Rwy 22L routing.

LANDING RWY 31C: From HAALIE on track 295° to cross HAADN, at 6000, then on track 295° to cross HILLS at 5000. Expect RNAV (RNP) approach or RADAR vectors to final approach course.

NOTE: RADAR required.  
 NOTE: RNAV 1.  
 NOTE: DME/DME/IRU or GPS required.  
 NOTE: Landing Rwy 31C: For non-RNP aircraft, expect RADAR vectors to final approach course.

KOKOMO OKK  
 VERTICAL NAVIGATION PLANNING INFORMATION  
 Expect 11000  
 Expect FL200

NOTE: Chart not to scale.

EC-3, 28 MAR 2019 to 25 APR 2019