

APP CRS	Rwy Idg	5812
228°	TDZE	611
	Apt Elev	620

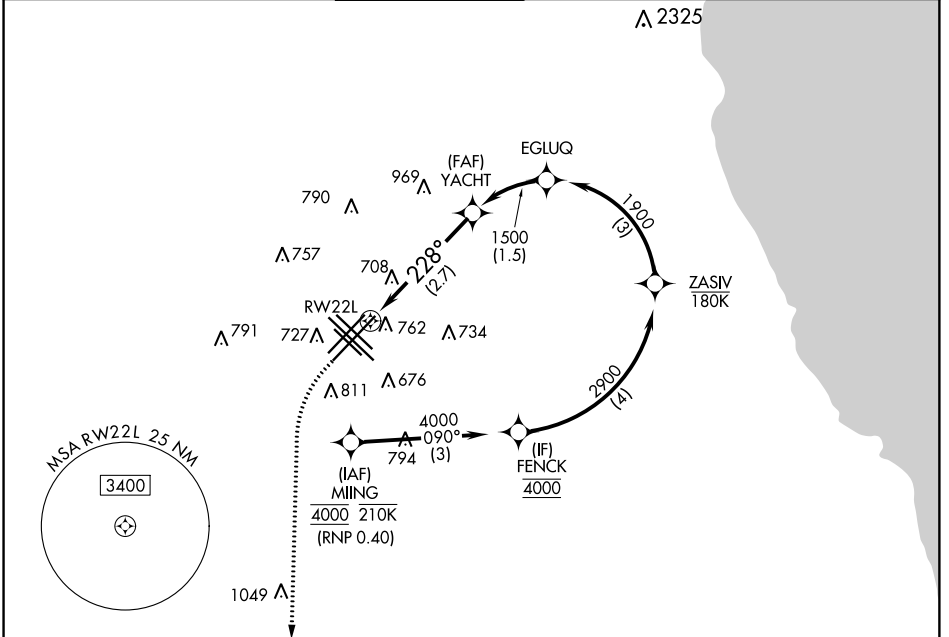
RNAV (RNP) X RWY 22L

CHICAGO MIDWAY INTL (MDW)

For uncompensated Baro-VNAV systems, procedure NA below -19°C (-2°F) or above 54°C (130°F). RF required. GPS required.

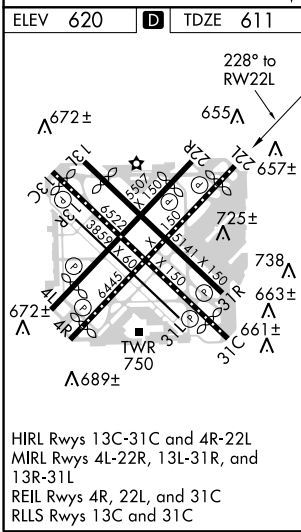
MISSED APPROACH: Climb to 1300 then climbing left turn to 2600 direct EON VORTAC and hold.

D-ATIS	CHICAGO APP CON	MIDWAY TOWER	GND CON	CLNC DEL	CPDLC
132.75	128.2 353.875	135.2 269.125	121.65	124.625	



EC-3, 28 MAR 2019 to 25 APR 2019

EC-3, 28 MAR 2019 to 25 APR 2019



MISSED APCH FIX

4 NM

181°

100'

PEOTONE EON

1300 2600 EON

VGSI and RNAV glidepath not coincident (VGSI Angle 3.00/TCH 43).

FENCK 4000

YACHT 1500

EGLUQ 1900

ZASIV 2900

RWY 22L 228°

1500

GP 3.00° TCH 50

	2.7 NM	1.5 NM	3 NM	4 NM	
CATEGORY	A	B	C	D	
RNP 0.18 DA		951-1 $\frac{1}{8}$	340 (400-1 $\frac{1}{8}$)		
RNP 0.30 DA		1001-1 $\frac{1}{4}$	390 (400-1 $\frac{1}{4}$)		

AUTHORIZATION REQUIRED