

APP CRS	Rwy Idg	5812
228°	TDZE	611
	Apt Elev	620

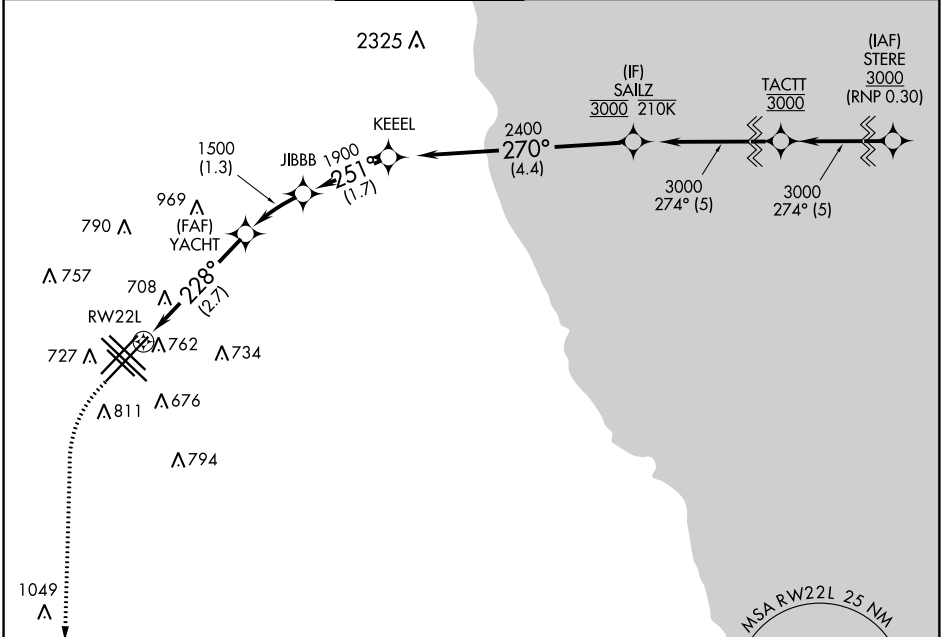
RNAV (RNP) Y RWY 22L

CHICAGO MIDWAY INTL (MDW)

▼ For uncompensated Baro-VNAV systems, procedure NA below -19°C (-2°F) or above 54°C (130°F). RF required. GPS required.

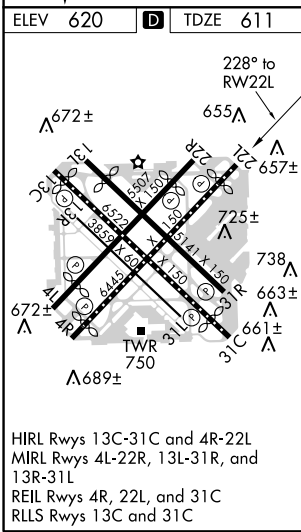
MISSED APPROACH: Climb to 1300 then climbing left turn to 2600 direct EON VORTAC and hold.

D-ATIS 132.75	CHICAGO APP CON 128.2 353.875	MIDWAY TOWER 135.2 269.125	GND CON 121.65	CLNC DEL 124.625	CPDLC
-------------------------	---	--------------------------------------	--------------------------	----------------------------	-------



EC-3, 28 MAR 2019 to 25 APR 2019

EC-3, 28 MAR 2019 to 25 APR 2019



MISSED APCH FIX

4 NM

181°

100'

PEOTONE EON

1300 2600 EON

VGSI and RNAV glidepath not coincident (VGSI Angle 3.00°/TCH 43).

SAILZ

KEEEL

YACHT

JIBBB

1500 251°

1900

2400

270°

3000

RW22L

228°

1500

2.7 NM

1.3 NM

1.7 NM

4.4 NM

GP 3.00° TCH 50

CATEGORY	A	B	C	D
RNP 0.18 DA		951-1½	340 (400-1½)	
RNP 0.30 DA		1001-1¼	390 (400-1¼)	

AUTHORIZATION REQUIRED