

APP CRS	Rwy ldg	5928
047°	TDZE	619
	Apt Elev	620

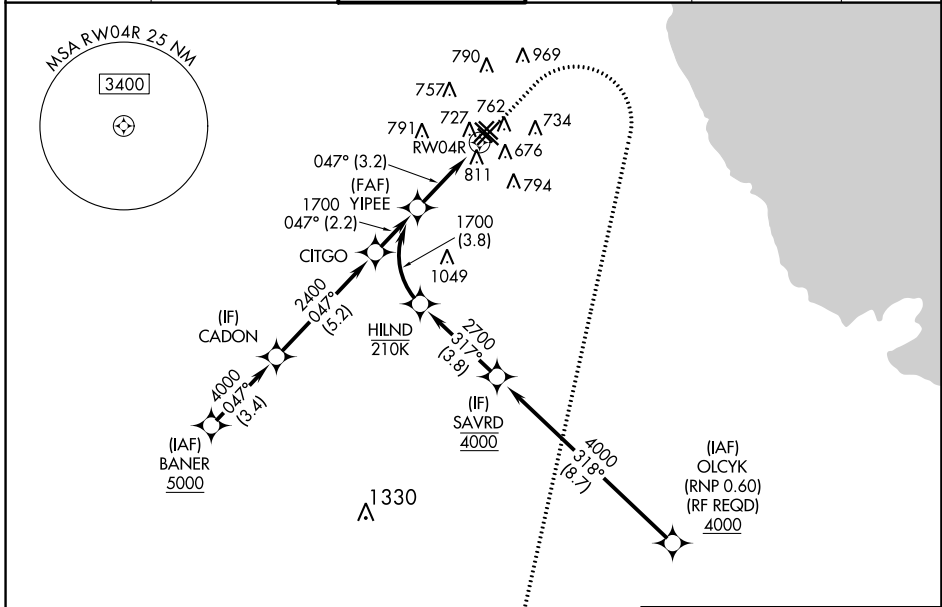
RNAV (RNP) Y RWY 4R

CHICAGO MIDWAY INTL (MDW)

▽ For uncompensated Baro-VNAV systems, procedure NA below -19°C (-2°F) or above 54°C (130°F). GPS required. When Rwy 4R VGSIs inoperative, procedure NA at night.

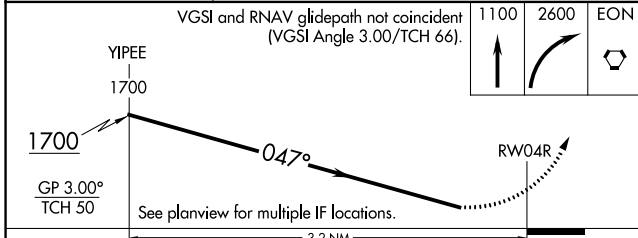
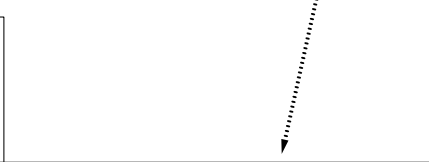
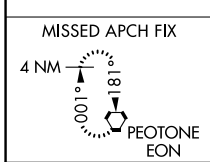
MISSED APPROACH: Climb to 1100 then climbing right turn to 2600 direct EON VORTAC and hold.

D-ATIS 132.75	CHICAGO APP CON 128.2 353.875	MIDWAY TOWER 135.2 269.125	GND CON 121.65	CLNC DEL 124.625	CPDLC
-------------------------	---	--------------------------------------	--------------------------	----------------------------	-------



EC-3, 28 MAR 2019 to 25 APR 2019

EC-3, 28 MAR 2019 to 25 APR 2019



ELEV 620	D	TDZE 619
----------	----------	----------

HIRL Rwy 13C-31C and 4R-22L
MIRL Rwy 4L-22R, 13L-31R, and 13R-31L
REIL Rwy 4R, 22L, and 31C
RLS Rwy 13C and 31C

CATEGORY	A	B	C	D
RNP 0.18 DA		976/59	357 (400-1¼)	
RNP 0.30 DA		1088-1⅝	469 (500-1⅝)	

AUTHORIZATION REQUIRED