

SHFTY FIVE ARRIVAL (RNAV)

FORT MYERS, FLORIDA

ARRIVAL ROUTE DESCRIPTION

CYNTA TRANSITION (CYNTA.SHFTY5)
HIBAC TRANSITION (HIBAC.SHFTY5)

From SHFTY on track 183° to WRTRS, then on track 161° to MAZZY, then on track 161° to MOEMO, then on track 160° to LBV VORTAC, thence....

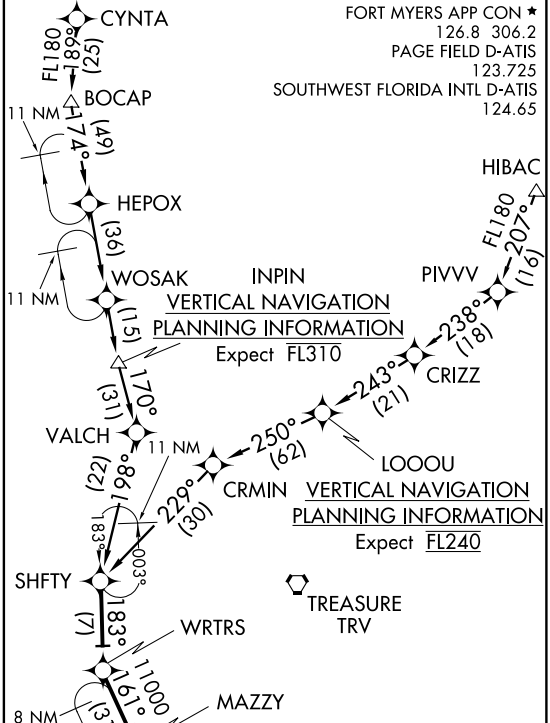
....Landing KRSW Rwy 6 and KFMY: From LBV VORTAC on track 186° to IRNIE, then on track 238° to WYCOF, then on track 238° to PONTY, then on heading 240° or as assigned by ATC. Expect RADAR vectors to final approach course.

....Landing KRSW Rwy 24: From LBV VORTAC on heading 228°. Expect RADAR vectors to final approach course.

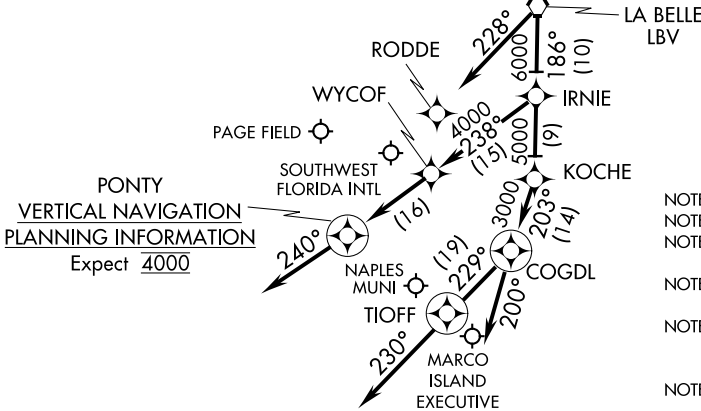
....Landing KAPF: From LBV VORTAC on track 186° to IRNIE, then on track 186° to KOCHE, then on track 203° to COGDL, then on heading 229° to TIOFF, then on heading 230°. Expect RADAR vectors to final approach course.

....Landing KMKY: From LBV VORTAC on track 186° to IRNIE, then on track 186° to KOCHE, then on track 203° to COGDL, then on heading 200°. Expect RADAR vectors to final approach course.

FORT MYERS APP CON ★
126.8 306.2
PAGE FIELD D-ATIS
123.725
SOUTHWEST FLORIDA INTL D-ATIS
124.65



MOEMO
VERTICAL NAVIGATION
PLANNING INFORMATION
KRSW Landing Rwy 6 Expect 10000
KRSW Landing Rwy 24 Expect 10000 250K



- NOTE: RADAR required.
- NOTE: RNAV 1.
- NOTE: DME/DME/IRU or GPS required.
- NOTE: Turbojet and turboprop aircraft only.
- NOTE: Aircraft landing KAPF: Expect RADAR vectors prior to TIOFF.
- NOTE: For non-GPS equipped aircraft, LBV and RSW must be operational.

NOTE: Chart not to scale.

SHFTY FIVE ARRIVAL (RNAV)

FORT MYERS, FLORIDA