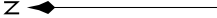
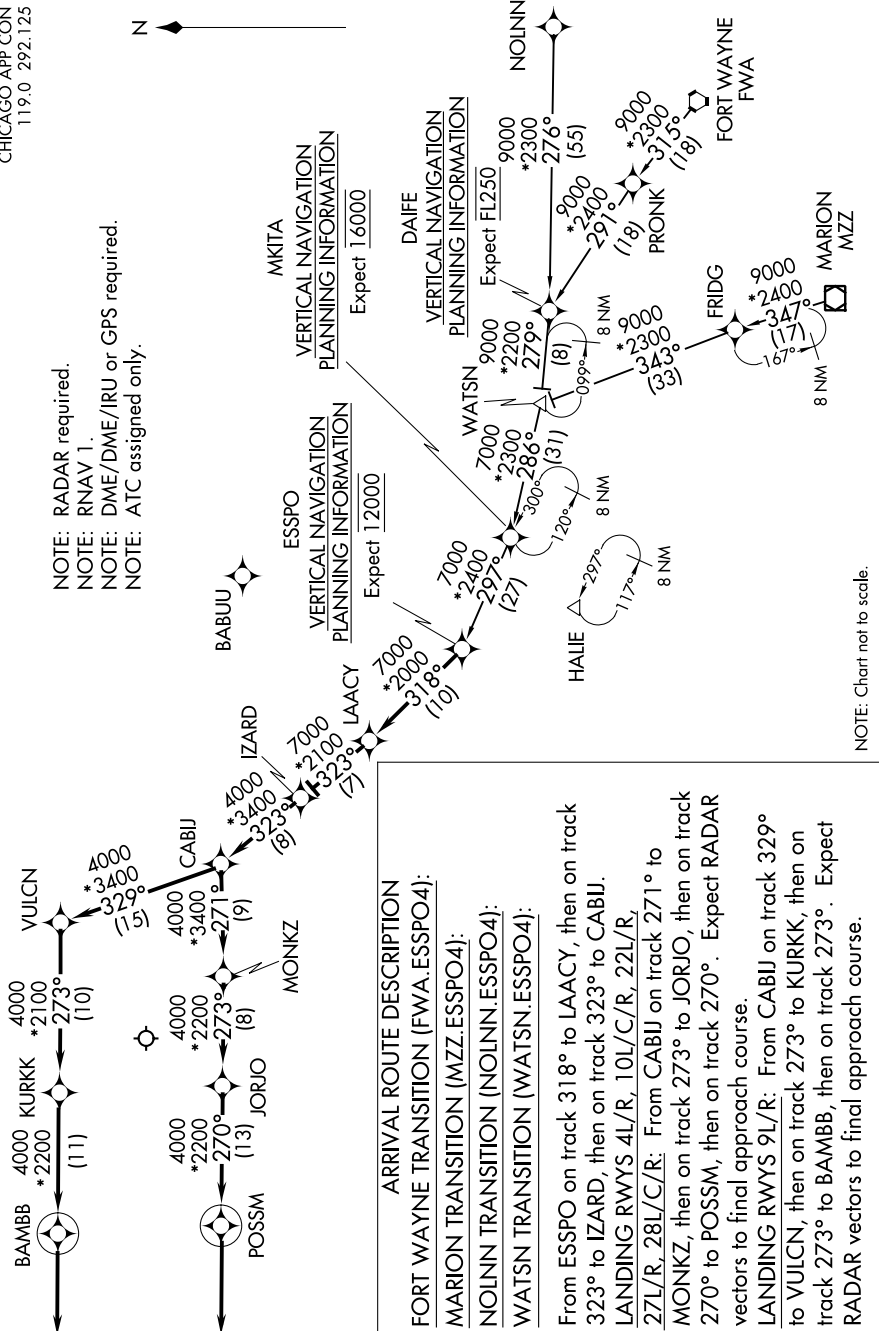


# ESSPO FOUR ARRIVAL (RNAV)

D-ATIS  
135.4 282.225  
CHICAGO APP CON  
119.0 292.125



NOTE: RADAR required.  
NOTE: RNAV 1.  
NOTE: DME/DME/IRU or GPS required.  
NOTE: ATC assigned only.



EC-3, 28 MAR 2019 to 25 APR 2019

**ARRIVAL ROUTE DESCRIPTION**  
**FORTWAYNE TRANSITION (FWA.ESSPO4):**  
**MARION TRANSITION (MZZ.ESSPO4):**  
**NOLINN TRANSITION (NOLINN.ESSPO4):**  
**WATSN TRANSITION (WATSN.ESSPO4):**

From ESSPO on track 318° to LAACY, then on track 323° to IZARD, then on track 323° to CABIJ.  
LANDING RWYS 4L/R, 10L/C/R, 22L/R, 27L/R, 28L/C/R: From CABIJ on track 271° to MONKZ, then on track 273° to JORJO, then on track 270° to POSSM, then on track 270°. Expect RADAR vectors to final approach course.  
LANDING RWYS 9L/R: From CABIJ on track 329° to VULCN, then on track 273° to KURKK, then on track 273° to BAMB, then on track 273°. Expect RADAR vectors to final approach course.

NOTE: Chart not to scale.

EC-3, 28 MAR 2019 to 25 APR 2019