

LOC/DME I-ABU 111.75 Chan 54 (Y)	APP CRS 273°	Rwy Idg 7500 TDZE 664 Apt Elev 680
---	------------------------	---

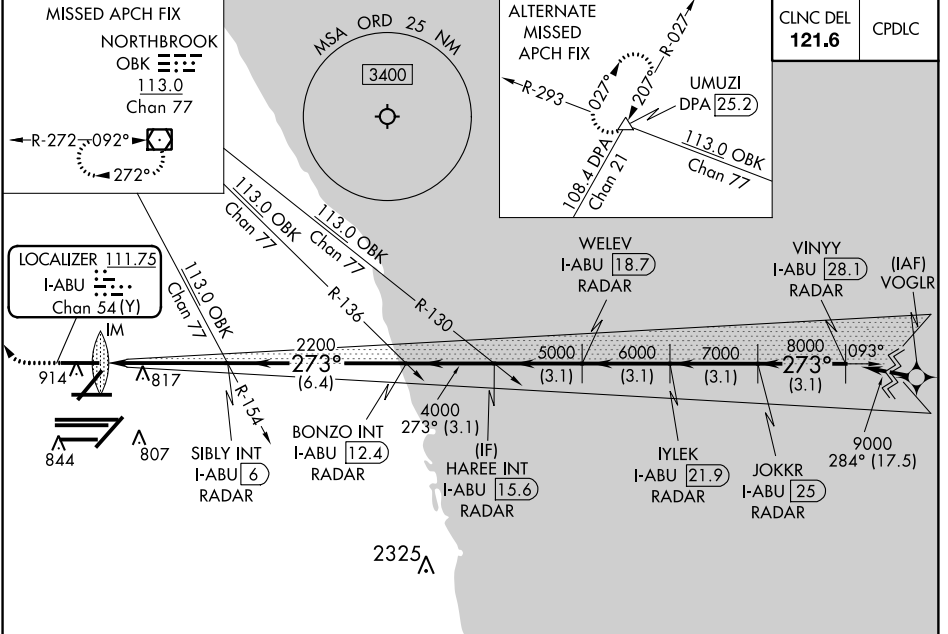
ILS RWY 27R (CAT II & III)

CHICAGO O'HARE INTL (ORD)

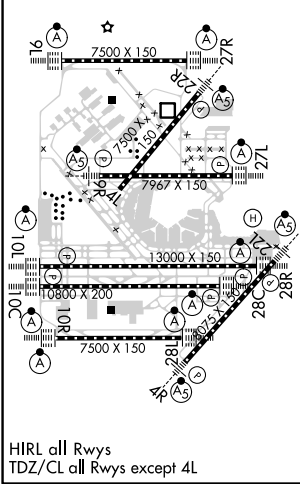
RNAV-1 GPS or RADAR required for procedure entry. RADAR or DME required. **ALSF-2** MISSED APPROACH: Climb to 1100 then climbing right turn to 4000 direct OBK VOR/DME and hold, continue climb-in-hold to 4000.

Simultaneous approach authorized.

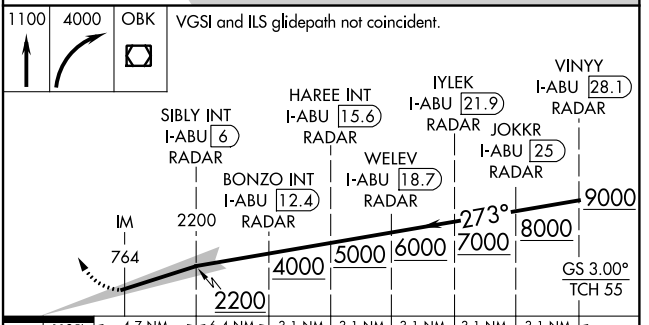
D-ATIS 135.4	CHICAGO APP CON 119.0 292.125	O'HARE TOWERS 128.15 348.0 133.0 348.0 (10R/28L) 120.75 121.15 126.9 132.7 348.0 (CENTER)	GND CON (TWR NORTH) 124.125 (TWR SOUTH) 118.05 (ALL TWS) 226.675	(TWR CENTER) 121.75 (OBND) (TWR INBD) 121.9
------------------------	---	---	--	--



ELEV 680	D	TDZE 664
----------	----------	----------



HIRL all Rwys
TDZ/CL all Rwys except 4L



CATEGORY	A	B	C	D
S-ILS-27R	CAT II RA 101/12 100 DA 764			
S-ILS-27R	CAT III RVR 06			

CATEGORY II & III ILS - SPECIAL AIRCREW & AIRCRAFT CERTIFICATION REQUIRED

EC-3, 28 MAR 2019 to 25 APR 2019

EC-3, 28 MAR 2019 to 25 APR 2019