

LOC/DME I-VZE 108.95 Chan 26 (Y)	APP CRS 273°	Rwy ldg 10800
		TDZE 651
		Apt Elev 680

ILS RWY 28C (CAT II & III)

CHICAGO O'HARE INTL (ORD)

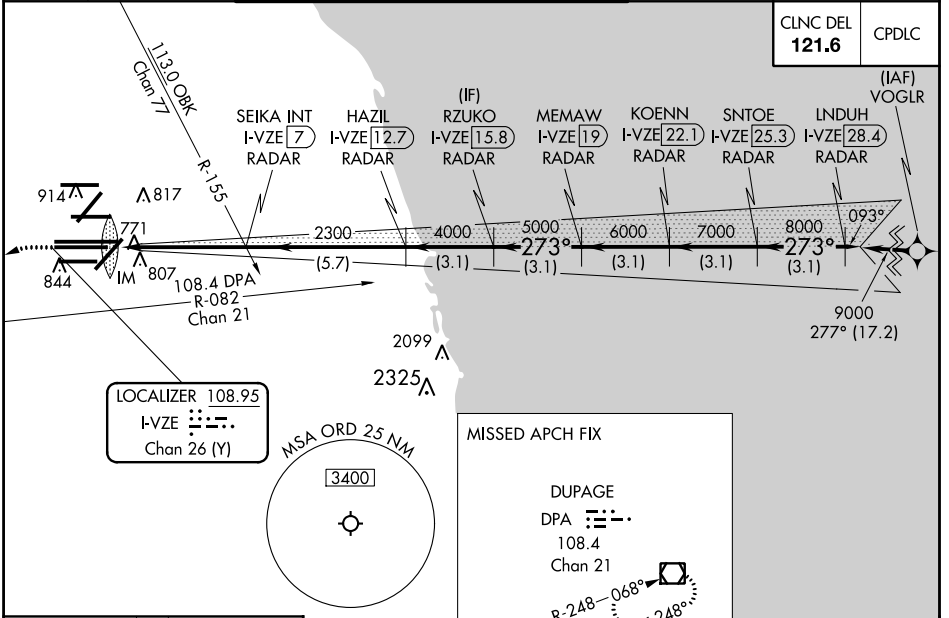
From VOGLR: RNAV 1-GPS required.
 Aircraft not GPS equipped - RADAR required for procedure entry.
 DME or RADAR required.
 Simultaneous approach authorized. CAT II: RVR 1000 authorized with specific OPSPEC, MSPEC, or LOA approval and use of autoland or HUD to touchdown.



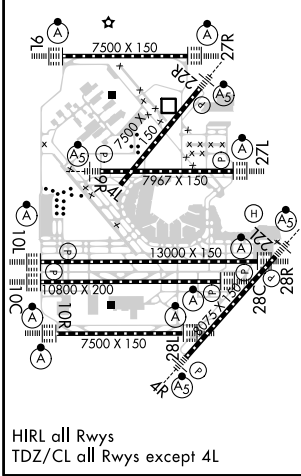
MISSED APPROACH: Climb to 1100 then climbing left turn to 4000 on heading 215° and DPA VOR/DME R-082 to DPA VOR/DME and hold.

D-ATIS 135.4	CHICAGO APP CON 119.0 292.125	O'HARE TOWERS 128.15 348.0 (Rwy 9L/27R) 133.0 348.0 (10R/28L) 120.75 121.15 126.9 132.7 348.0 (CENTER)	CND CON (TWR NORTH) 124.125 (TWR SOUTH) 118.05 (ALL TWRS) 226.675	(TWR CENTER) 121.75 (OBND) (IBND) 121.9
------------------------	---	--	---	--

CLNC DEL 121.6	CPDLC
--------------------------	-------



ELEV 680	D	TDZE 651
-----------------	----------	-----------------



1100	4000	DPA R-082	DPA	VGSI and ILS glidepath not coincident (VGSI Angle 3.00°/TCH 80).	LNDUH I-VZE [28.4] RADAR
hdg 215°					RZUKO I-VZE [15.8] RADAR
					KOENN I-VZE [22.1] RADAR
					SNTOE I-VZE [25.3] RADAR
					MEMAW I-VZE [19] RADAR
					HAZIL I-VZE [12.7] RADAR
					SEIKA INT I-VZE [7] RADAR
					IM 2300
					750
					2300
					4000
					5000
					6000
					7000
					8000
					9000
					GS 3.00° TCH 55
					3.1 NM
					3.1 NM
					3.1 NM
					3.1 NM
					3.1 NM
CATEGORY	A	B	C	D	
S-ILS 28C	CAT II RA 105/12 100 DA 751				
S-ILS 28C	CAT III RA 105/12 RVR 06				

CATEGORY II & III ILS - SPECIAL AIRCREW & AIRCRAFT CERTIFICATION REQUIRED

EC-3, 28 MAR 2019 to 25 APR 2019

EC-3, 28 MAR 2019 to 25 APR 2019