

LOC/DME I-VQX 110.75 Chan 44(Y)	APP CRS 274°	Rwy Idg TDZE Apt Elev 7500 667 680
---	------------------------	--

ILS RWY 28L (CAT II & III)

CHICAGO-O'HARE INTL (ORD)

From VOGLR: RNAV I-GPS required.
 Aircraft not GPS equipped - RADAR required for procedure entry.
 DME or RADAR required.

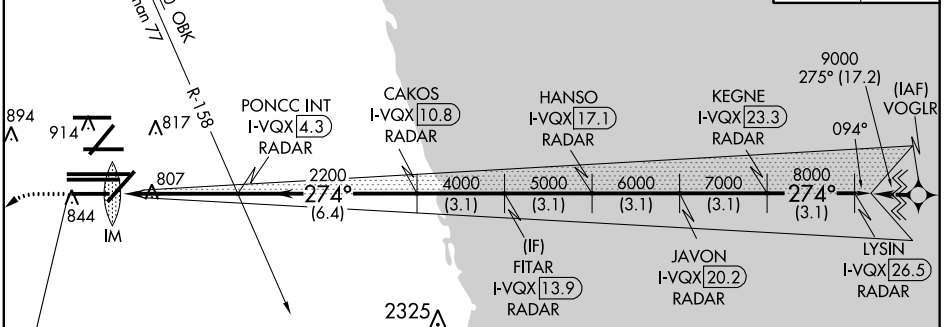
ALSIF-2

MISSED APPROACH:
 Climb to 1200 then climbing left turn to 4000 direct CGT VORTAC and hold.

Simultaneous approach authorized.
 CAT II: RVR 1000 authorized with specific OPSPEC, MSPEC, or LOA approval and use of autoland or HUD to touchdown.

D-ATIS 135.4 282.225	CHICAGO APP CON 119.0 292.125	O'HARE TOWERS 128.15 348.0 (Rwy 9L/27R) 133.0 348.0 (10R/28L)		GND CON (TWR NORTH) 124.125 (TWR SOUTH) 118.05 (ALL TWRs) 226.675	(TWR CENTER) (OBND) 121.75 (IBND) 121.9
--	--	--	--	---	--

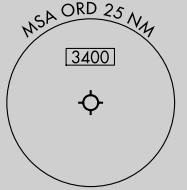
CNLC DEL 121.6	CPDLC
--------------------------	-------



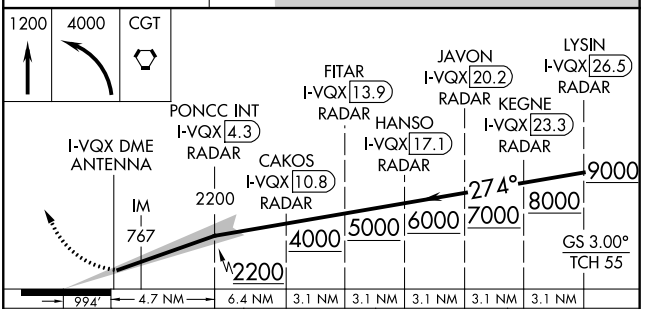
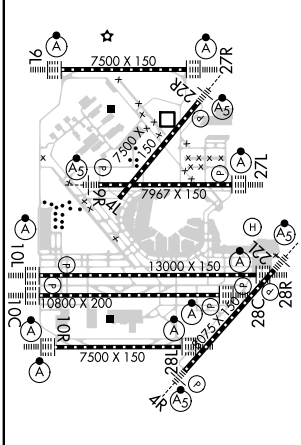
LOCALIZER 110.75
 I-VQX
 Chan 44(Y)

MISSED APCH FIX
 CHICAGO HEIGHTS CGT 114.2 Chan 89 R-156

ALTERNATE MISSED APCH FIX
 JOLIET 112.3 Chan 70 R-246



ELEV 680	D	TDZE 667
----------	----------	----------



CATEGORY	A	B	C	D
S-ILS 28L	CAT II RA 106/12 100 DA 767			
S-ILS 28L	CAT III RVR 06			

CATEGORY II & III ILS - SPECIAL AIRCREW & AIRCRAFT CERTIFICATION REQUIRED

EC-3, 28 MAR 2019 to 25 APR 2019

EC-3, 28 MAR 2019 to 25 APR 2019