

LOC/DME I-VQX 110.75 Chan 44(Y)	APP CRS 274°	Rwy ldg TDZE Apt Elev	7500 667 680
---	------------------------	-----------------------------	---

ILS RWY 28L (SA CAT I)

CHICAGO-O'HARE INTL (ORD)

From VOGLR: RNAV 1-GPS required.

Aircraft not GPS equipped - RADAR required for procedure entry. DME or RADAR required.

Simultaneous approach authorized. Requires specific OPSPEC, MSPEC, or LOA approval and use of HUD to DH. For inop ALS, increase S-LOC 28L Cat C/D visibility to 1/8 SM.

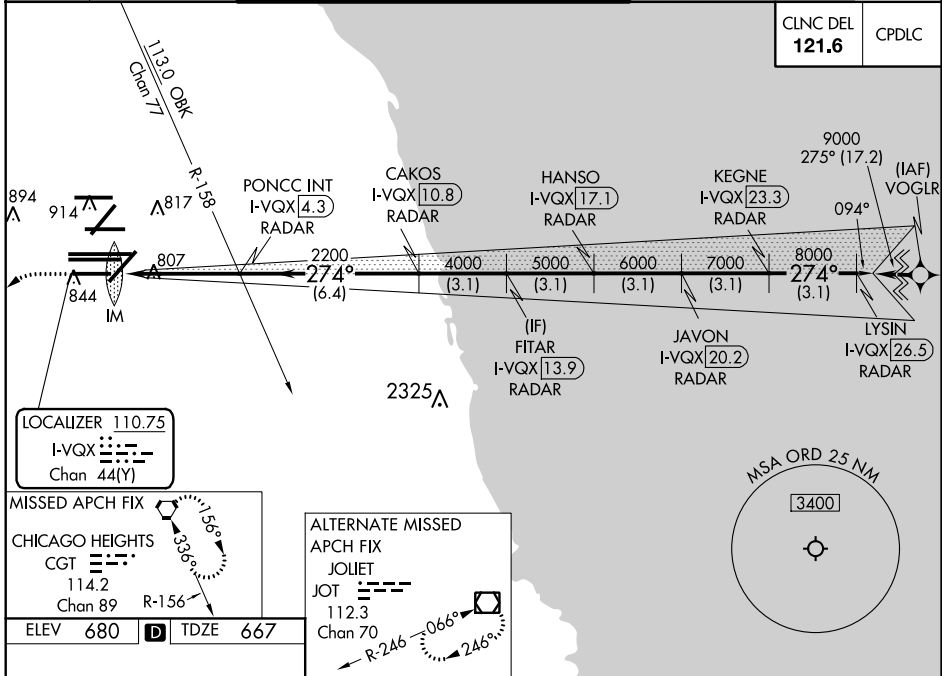
ALS-F-2



MISSED APPROACH: Climb to 1200 then climbing left turn to 4000 direct CGT VORTAC and hold.

D-ATIS 135.4	CHICAGO APP CON 119.0 292.125	O'HARE TOWERS 128.15 348.0 (Rwy 9L/27R) 133.0 348.0 (10R/28L) 120.75 121.15 126.9 132.7 348.0 (CENTER)	GND CON (TWR NORTH) 124.125 (TWR SOUTH) 118.05 (ALL TWRs) 226.675	(TWR CENTER) 121.75 (OBND) (IBND) 121.9
------------------------	---	--	---	--

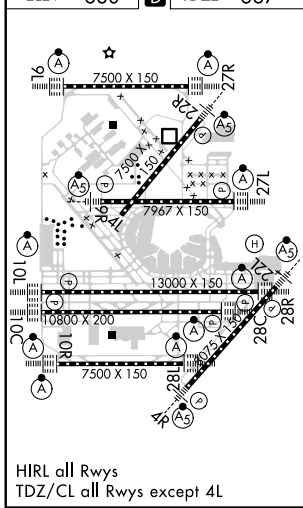
CLNC DEL 121.6	CPDLC
--------------------------	-------



LOCALIZER 110.75
I-VQX
Chan 44(Y)

MISSED APCH FIX
CHICAGO HEIGHTS
CGT 114.2
Chan 89
ELEV 680 D TDZE 667

ALTERNATE MISSED APCH FIX
JOLIET
JOT 112.3
Chan 70



1200	4000	CGT	FITAR I-VQX 13.9		JAVON I-VQX 20.2	LYSIN I-VQX 26.5
↑	↙	⬡	PONCC INT I-VQX 4.3		HANSO I-VQX 17.1	KEKNE I-VQX 23.3
			I-VQX DME ANTENNA		CAKOS I-VQX 10.8	
			IM	2200	4000	5000
				2200	6000	7000
					8000	9000
						GS 3.00° TCH 55
			99°	4.7 NM	6.4 NM	3.1 NM
					3.1 NM	3.1 NM
						3.1 NM
CATEGORY	A	B	C	D		
S-ILS 28L	RA 157/14 150 DA 817					

SA CATEGORY I ILS-SPECIAL AIRCREW & AIRCRAFT CERTIFICATION REQUIRED

EC-3, 28 MAR 2019 to 25 APR 2019

EC-3, 28 MAR 2019 to 25 APR 2019