

LOC/DME I-TSL 111.1 Chan 48	APP CRS 273°	Rwy ldg 13000 TDZE 651 Apt Elev 680
---	------------------------	--

ILS RWY 28R (SA CAT I)

CHICAGO-O'HARE INTL (ORD)

From VOGLR: RNAV 1-GPS required.
Aircraft not GPS equipped - RADAR required for procedure entry.
DME or RADAR required.

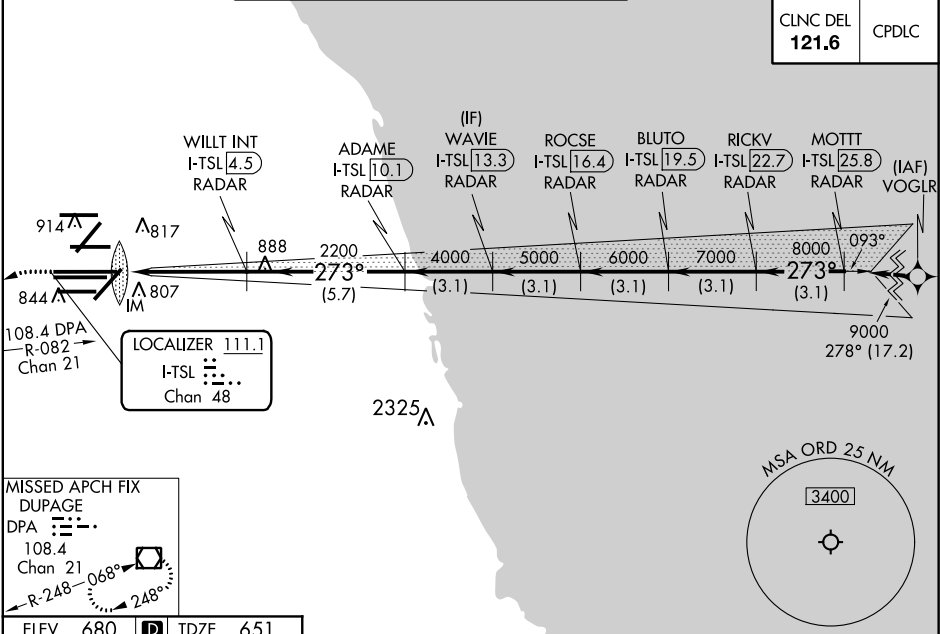
Simultaneous approach authorized. Requires specific OPSPEC, MSPEC, or LOA approval and use of HUD to DH.

ALSIF-2

MISSED APPROACH: Climb to 1100 then climbing left turn to 4000 on heading 215° and DPA VOR/DME R-082 to DPA VOR/DME and hold.

D-ATIS	CHICAGO APP CON	O'HARE TOWERS				GND CON	(TWR CENTER)
135.4	119.0 292.125	128.15 348.0 (Rwy 9L/27R)	133.0 348.0 (10R/28L)	124.125 (TWR NORTH)	121.75 (OBND)		
282.225		120.75 121.15 126.9 132.7 348.0 (CENTER)		118.05 (TWR SOUTH)	121.9 (IBND)		
				226.675 (ALL TWR)			

CLNC DEL	CPDLC
121.6	

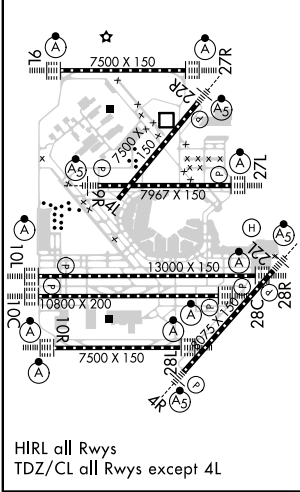
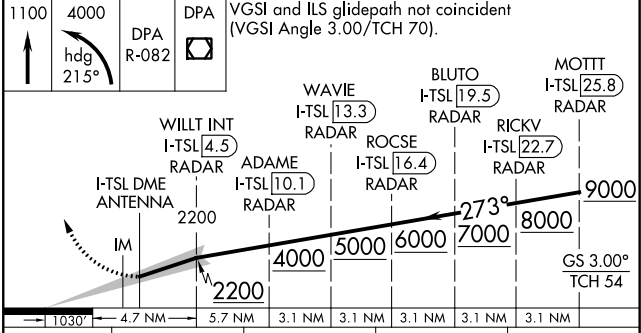


EC-3, 28 MAR 2019 to 25 APR 2019

EC-3, 28 MAR 2019 to 25 APR 2019

MISSED APCH FIX DUPAGE
DPA
108.4
Chan 21
R-248 068°
248°

ELEV 680	D	TDZE 651
-----------------	----------	-----------------



HIRL all Rws
TDZ/CL all Rws except 4L

CATEGORY	A	B	C	D
S-ILS 28R	RA 161/14 150 DA 801			

SA CATEGORY I ILS-SPECIAL AIRCREW & AIRCRAFT CERTIFICATION REQUIRED