

LOC/DME I-SXH 108.95 Chan 26(Y)	APP CRS 093°	Rwy Ldg 10540	TDZE 669
		Apt Elev 680	

ILS or LOC RWY 10C

CHICAGO O'HARE INTL (ORD)

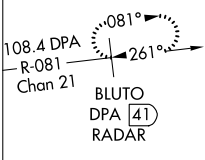
From GIBNS: RNAV-1 GPS required.
 RNAV 1-GPS or RADAR required for procedure entry. DME or RADAR required.
 Simultaneous approach authorized.

ALSF-2
 MISSED APPROACH: Climb to 4000 on heading 093° and CGT VORTAC R-336 to CGT VORTAC and hold.

CHICAGO APP CON 119.0 292.125	O'HARE TOWERS 128.15 348.0 (Rwy 9L/27R) 133.0 348.0 (10R/28L) 120.75 121.15 126.9 132.7 348.0 (CENTER)	GND CON (TWR NORTH) 124.125 (TWR SOUTH) 118.05 (ALL TWRs) 226.675	(TWR CENTER) 121.75 (OBND) 121.9 (IBND)	CLNC DEL 121.6
---	---	---	---	--------------------------

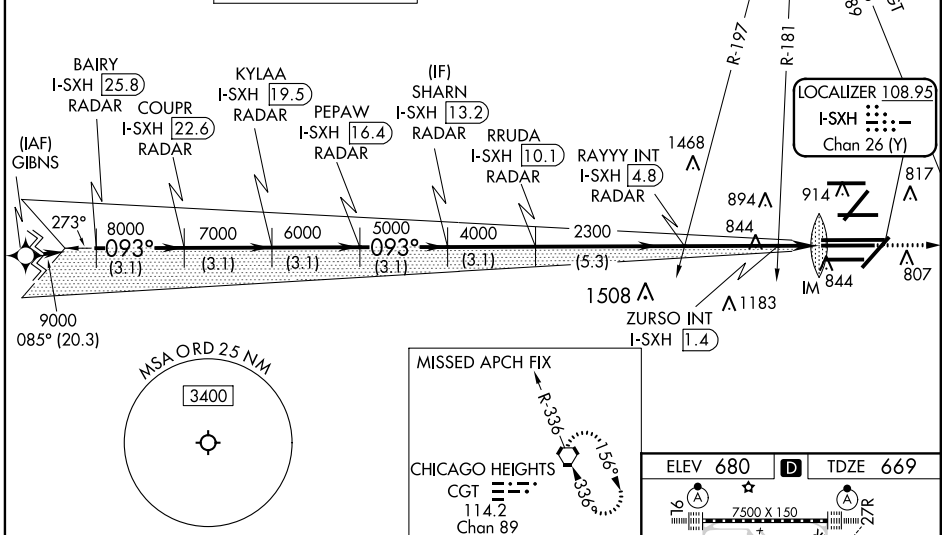
D-ATIS
135.4
282.225

ALTERNATE MISSED APCH FIX



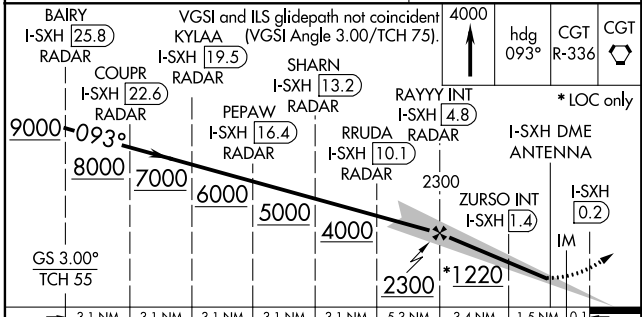
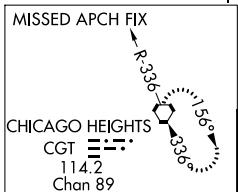
NORTHBROOK
113.0 OBK
Chan 77

CPDLC

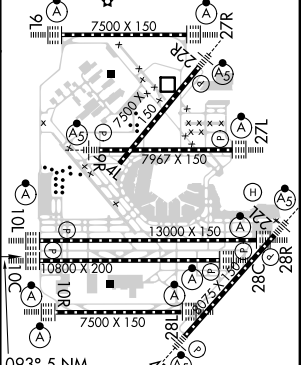


EC-3, 28 MAR 2019 to 25 APR 2019

EC-3, 28 MAR 2019 to 25 APR 2019



ELEV 680 TDZE 669



3.1 NM	3.1 NM	3.1 NM	3.1 NM	3.1 NM	5.3 NM	3.4 NM	1.5 NM	0.1 NM
CATEGORY A					CATEGORY B		CATEGORY C	
S-ILS 10C					869/18 200 (200-½)			
S-LOC 10C					1220/24 551 (600-½) 1220/60 551 (600-1¼)			
ZURSO FIX MINIMUMS (DUAL VOR RECEIVERS OR DME REQUIRED)								
S-LOC 10C					1100/24 431 (500-½) 1100/40 431 (500-¾)			

093° 5 NM from FAF					HIRL all Rwy's TDZ/CL all Rwy's except 4L				
FAF to MAP 5 NM									
Knots	60	90	120	150	180				
Min:Sec	5:00	3:20	2:30	2:00	1:40				