

LOC/DME I-MED 111.1 Chan 48	APP CRS 093°	Rwy ldg 12246 TDZE 672 Apt Elev 680
---	------------------------	--

ILS or LOC RWY 10L

CHICAGO-O'HARE INTL (ORD)

From GIBNS: RNAV-1 GPS required.
 RNAV 1-GPS or RADAR required for procedure entry. DME or RADAR required.
 Simultaneous approach authorized.

ALSF-2
 MISSED APPROACH: Climb to 4000 on heading 093° and CGT VORTAC R-336 to CGT VORTAC and hold.

CHICAGO APP CON 119.0 292.125	O'HARE TOWERS 128.15 348.0 (Rwy 9L/27R) 133.0 348.0 (10R/28L) 126.9 348.0 (CENTER)	GND CON (TWR CENTER) 124.125 (TWR NORTH) 118.05 (TWR SOUTH) 226.675 (ALL TWRs)	(TWR CENTER) 121.75 (OBND) 121.9 (IBND)	CLNC DEL 121.6
---	--	--	---	--------------------------

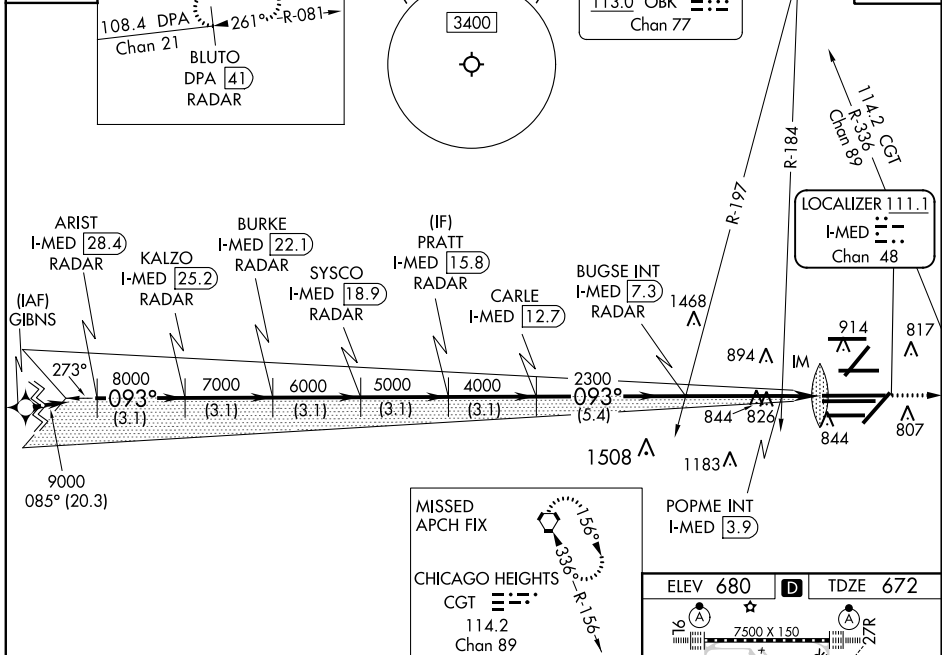
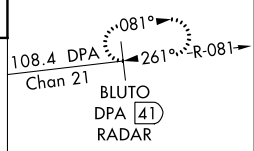
D-ATIS **135.4**
282.225

ALTERNATE MISSED APCH FIX

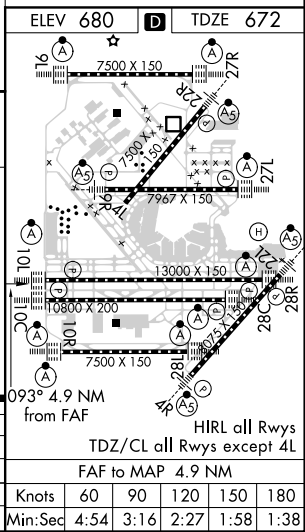
MSA ORD 2.5 NM
 3400

NORTHBROOK
 113.0 OBK
 Chan 77

CPDLC



ARIST I-MED 28.4 RADAR	BURKE I-MED 22.1 RADAR	PRATT I-MED 15.8 RADAR	BURKE I-MED 22.1 RADAR	PRATT I-MED 15.8 RADAR	BUGSE INT I-MED 7.3	POPME INT I-MED 3.9	CGT R-336
KALZO I-MED 25.2 RADAR	SYSKO I-MED 18.9 RADAR	CARLE I-MED 12.7	SYSKO I-MED 18.9 RADAR	CARLE I-MED 12.7	POPME INT I-MED 3.9	I-MED 2.4	
*LOC only.							
3.1 NM	3.1 NM	3.1 NM	3.1 NM	3.1 NM	5.4 NM	3.4 NM	1.4 NM
CATEGORY A B C D							
S-ILS 10L 872/18 200 (200-½)							
S-LOC 10L 1200/24 528 (600-½) 1200/55 528 (600-1)							
POPME FIX MINIMUMS (DUAL VOR RECEIVERS OR DME REQUIRED)							
S-LOC 10L 1080/24 408 (400-½) 1080/40 408 (400-¾)							



EC-3, 28 MAR 2019 to 25 APR 2019

EC-3, 28 MAR 2019 to 25 APR 2019