

LOC I-RXZ 111.3	APP CRS 223°	Rwy ldg TDZE 7500 652	Apt Elev 680
---------------------------	------------------------	---	------------------------

ILS or LOC RWY 22R

CHICAGO O'HARE INTL (ORD)

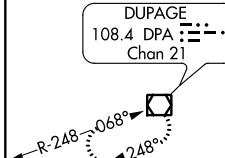
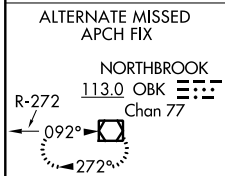
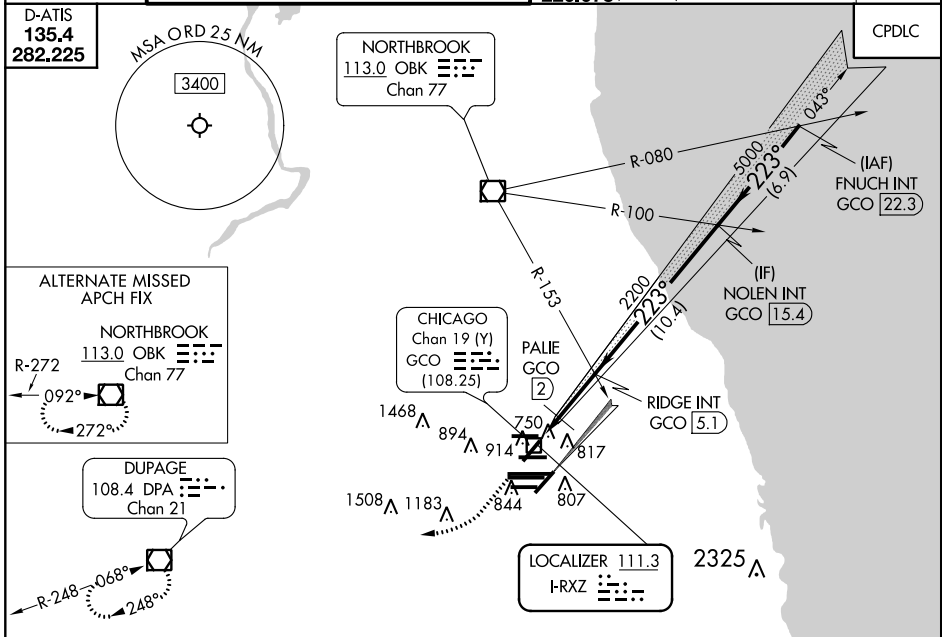
RADAR required for procedure entry.

Simultaneous approach authorized.
*DME from GCO DME.

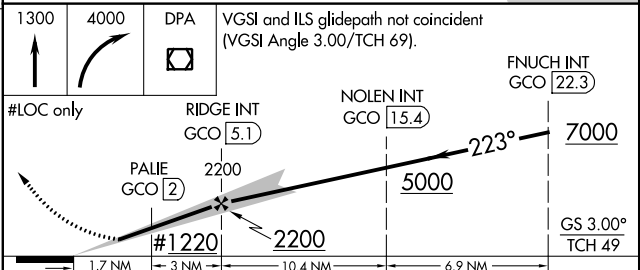
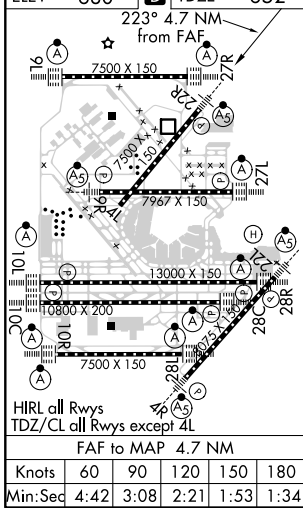
MALSR

MISSED APPROACH: Climb to 1300 then climbing right turn to 4000 direct DPA VOR/DME and hold.

CHICAGO APP CON 119.0 292.125	O'HARE TOWERS 128.15 348.0 (Rwy 9L/27R) 133.0 348.0 (10R/28L) 120.75 121.15 126.9 132.7 348.0 (CENTER)	GND CON (TWR NORTH) 124.125 (TWR SOUTH) 118.05 (ALL TWRs) 226.675	(TWR CENTER) 121.75 (OBND) 121.9 (IBND)	CLNC DEL 121.6
---	--	---	---	--------------------------



ELEV 680	TDZE 652
----------	----------



CATEGORY	A	B	C	D
S-ILS 22R	852/18 200 (200-½)			
S-LOC 22R	1220/24	568 (600-½)	1220-1¼	568 (600-1¼)
C CIRCLING	1220-1	540 (600-1)	1220-1½	1460-2½
*PALIE FIX MINIMUMS				
S-LOC 22R	980/24	328 (300-½)	980/26	328 (300-½)
C CIRCLING	1220-1	540 (600-1)	1220-1½	1460-2½
			540 (600-1½)	780 (800-2½)

EC-3, 28 MAR 2019 to 25 APR 2019

EC-3, 28 MAR 2019 to 25 APR 2019