

LOC/DME I-AIC 110.5 Chan 42	APP CRS 273°	Rwy ldg 7782 TDZE 654 Apt Elev 680
---	------------------------	--

ILS or LOC RWY 27L

CHICAGO O'HARE INTL (ORD)

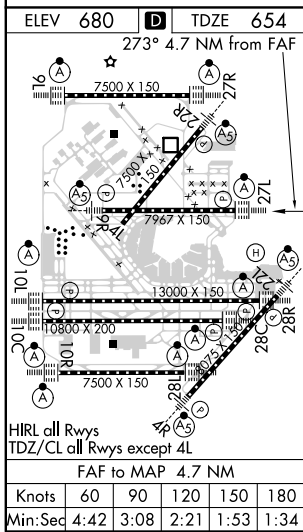
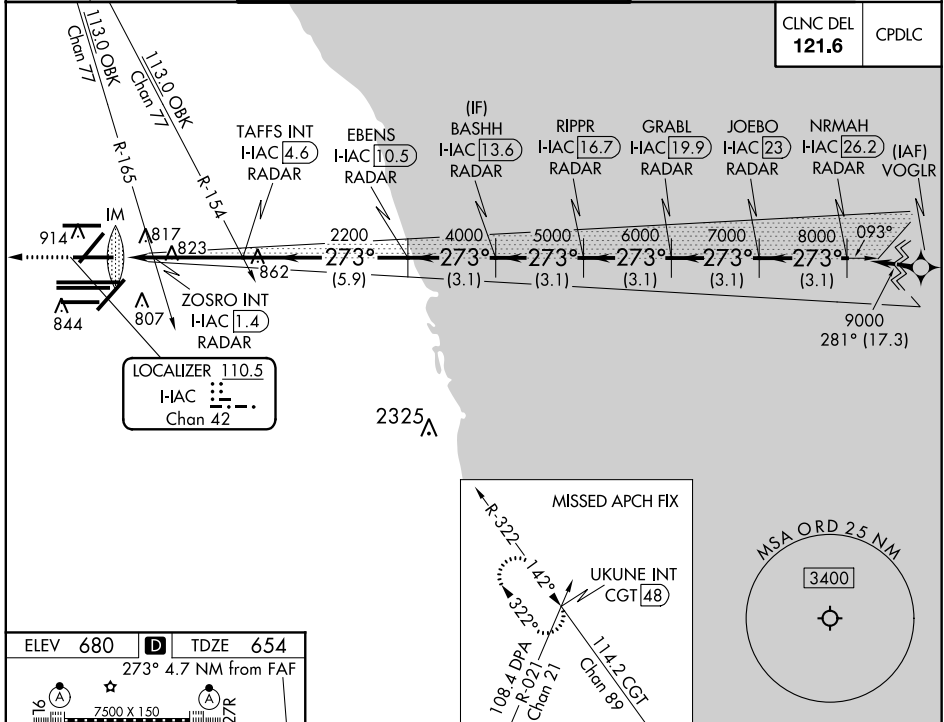
From VOGLR: RNAV 1-GPS required.
 Aircraft not GPS equipped - RADAR required for procedure entry.
 DME or RADAR required.

ALSF-2

MISSED APPROACH: Climb to 1200 then climbing right turn to 4000 on heading 295° and on CGT VORTAC R-322 to UKUNE INT/CGT 48 DME and hold.

Simultaneous approach authorized.

D-ATIS 135.4 282.225	CHICAGO APP CON 119.0 292.125	O'HARE TOWERS 128.15 348.0 (Rwy 9L/27R) 133.0 348.0 (10R/28L) 120.75 121.15 126.9 132.7 348.0 (CENTER)				GND CON (TWR CENTER) 124.125 (TWR NORTH) 121.75 (OBND) (TWR SOUTH) 121.9 (IBND) 226.675 (ALL TWS)
--	---	--	--	--	--	---



1200	4000	CGT R-322	UKUNE INT	VGSI and ILS glidepath not coincident (VGSI Angle 3.00/TCH 67).				
*LOC only		TAFFS INT I-HAC 4.6	EBENS I-HAC 10.5	BASHH I-HAC 13.6	RIPPR I-HAC 16.7	GRABL I-HAC 19.9	JOEBO I-HAC 23	NRMAH I-HAC 26.2
I-HAC DME ANTENNA		ZOSRO INT I-HAC 1.4	IM 807	IM 844	IM 817	IM 823	IM 862	IM 914
CATEGORY		A	B	C	D			
S-ILS 27L		854/18				200 (200-½)		
S-LOC 27L		1160/24	506 (500-½)	1160/55	506 (500-1)			
ZOSRO FIX MINIMUMS (DUAL VOR RECEIVERS OR DME REQUIRED)								
S-LOC 27L		1080/24	426 (400-½)	1080/40	426 (400-¾)			

EC-3, 28 MAR 2019 to 25 APR 2019

EC-3, 28 MAR 2019 to 25 APR 2019