

LOC/DME I-VQX 110.75 Chan 44(Y)	APP CRS 274°	Rwy ldg TDZE Apt Elev	7500 667 680
---	------------------------	-----------------------------	---

ILS or LOC RWY 28L

CHICAGO-O'HARE INTL (ORD)

Aircraft not GPS equipped - RADAR required for procedure entry. DME or RADAR required.
From VOGLR: RNAV 1-GPS required.

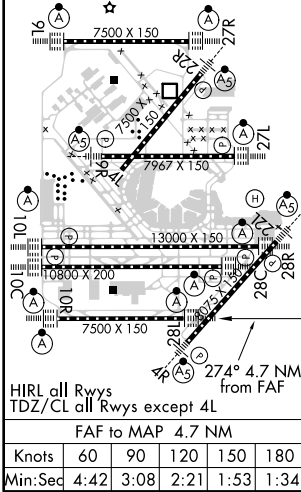
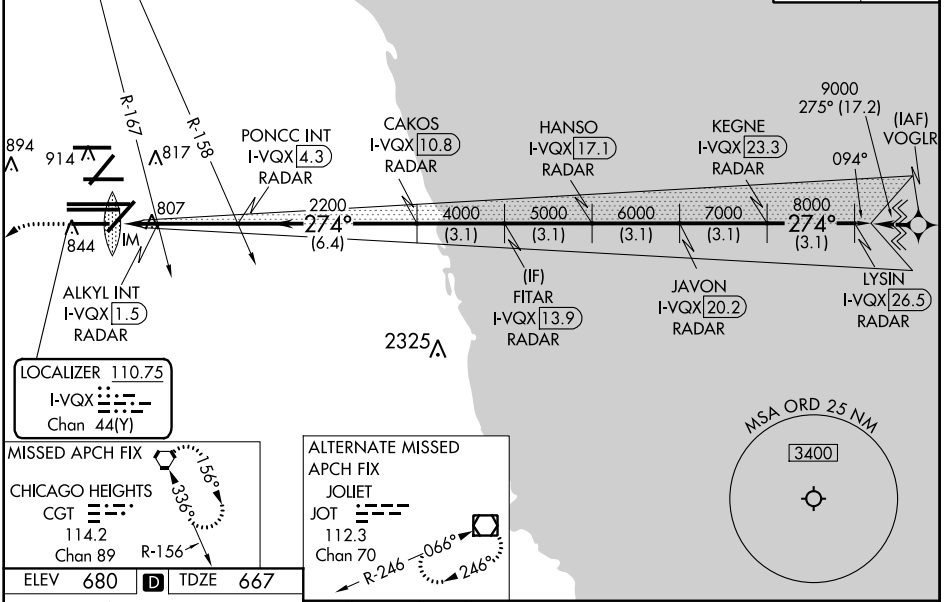
ALSF-2

MISSED APPROACH: Climb to 1200 then climbing left turn to 4000 direct CGT VORTAC and hold.

Simultaneous approach authorized.

D-ATIS 135.4 282.225	CHICAGO APP CON 119.0 292.125	O'HARE TOWERS 128.15 348.0 (Rwy 9L/27R) 133.0 348.0 (10R/28L) 120.75 121.15 126.9 132.7 348.0 (CENTER)	GND CON (TWR CENTER) (TWR NORTH) (TWR SOUTH) 124.125 (TWR NORTH) 118.05 (TWR SOUTH) 226.675 (ALL TWSR)	121.75 (OBND) 121.9 (IBND)
--	---	--	--	---

CLNC DEL 121.6	CPDLC
--------------------------	-------



ELEV 680	TDZE 667
1200 4000 CGT	*LOC only.
I-VQX [0.3] RADAR	I-VQX [0.8] RADAR
ANTENNA	ALKYL INT I-VQX [1.5] RADAR
PONCC INT I-VQX [4.3] RADAR	CAKOS I-VQX [10.8] RADAR
FITAR I-VQX [13.9] RADAR	HANSO I-VQX [17.1] RADAR
JAVON I-VQX [20.2] RADAR	KEKNE I-VQX [23.3] RADAR
LYSIN I-VQX [26.5] RADAR	
2200 4000 5000 6000 7000 8000 274°	9000
0.2 0.9 0.7 2.9 NM 6.4 NM 3.1 NM 3.1 NM 3.1 NM 3.1 NM 3.1 NM	GS 3.00° TCH 55
CATEGORY A B C D	
S-ILS 28L	867/18 200 (200-½)
S-LOC 28L	1240/24 573 (600-½) 1240-¼ 573 (600-1¼)
ALKYL FIX MINIMUMS (DUAL VOR RECEIVERS OR DME REQUIRED)	
S-LOC 28L	1060/24 393 (400-½) 1060/35 393 (400-¾)

EC-3, 28 MAR 2019 to 25 APR 2019

EC-3, 28 MAR 2019 to 25 APR 2019