

| | | |
|---|------------------------|--|
| LOC/DME I-TSL 111.1 Chan 48 | APP CRS 273° | Rwy ldg 13000 TDZE 651 Apt Elev 680 |
|---|------------------------|--|

ILS or LOC RWY 28R

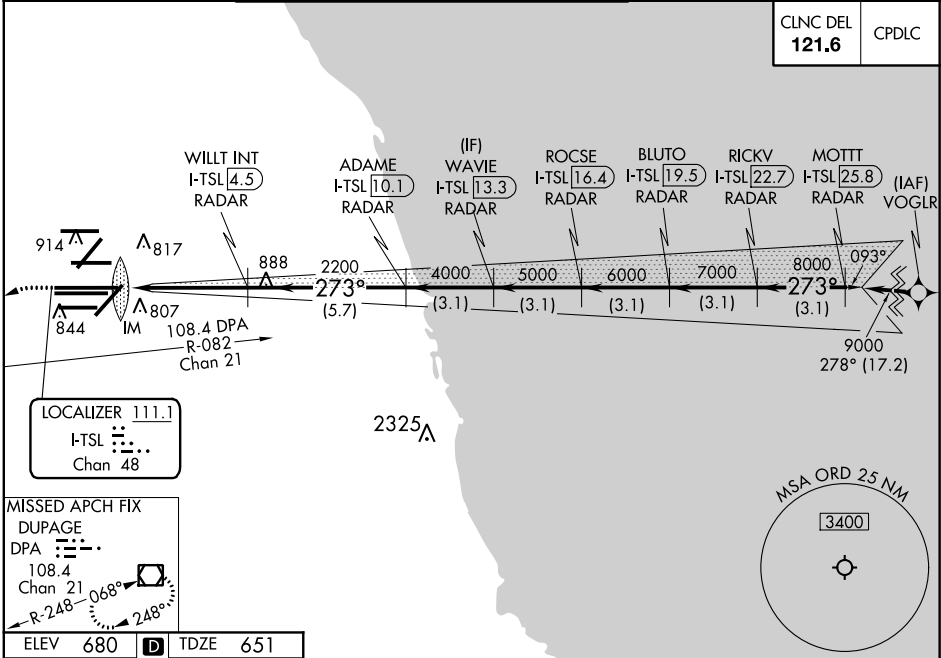
CHICAGO-O'HARE INTL (ORD)

Aircraft not GPS equipped - RADAR required for procedure entry, DME or RADAR required.
From VOGLR: RNAV 1-GPS required.
Simultaneous approach authorized.

ALSF-2
MISSED APPROACH: Climb to 1100 then climbing left turn to 4000 on heading 215° and DPA VOR/DME R-082 to DPA VOR/DME and hold.

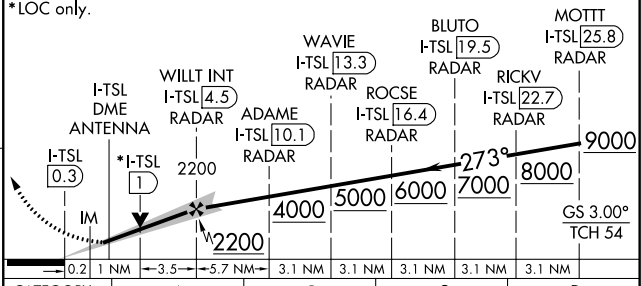
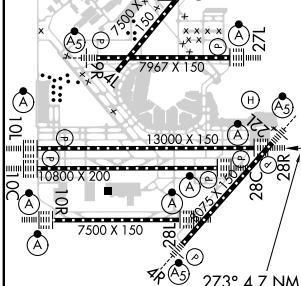
| | | | | |
|--|---|--|--|--|
| D-ATIS 135.4 282.225 | CHICAGO APP CON 119.0 292.125 | O'HARE TOWERS 128.15 348.0 (Rwy 9L/27R) 133.0 348.0 (10R/28L) 120.75 121.15 126.9 132.7 348.0 (CENTER) | GND CON (TWR NORTH) 124.125 (TWR SOUTH) 118.05 (ALL TWSR) 226.675 | (TWR CENTER) 121.75 (OBND) (IBND) 121.9 |
|--|---|--|--|--|

| | |
|--------------------------|-------|
| CLNC DEL 121.6 | CPDLC |
|--------------------------|-------|



| | | |
|-----------------|---|-----------------|
| ELEV 680 | D | TDZE 651 |
|-----------------|---|-----------------|

1100 4000 DPA VGS1 and ILS glidepath not coincident (VGS1 Angle 3.00/TCH 70).
hdg 215°
*LOC only.



| | |
|---|---|
| HIRL all Rwys TDZ/CL all Rwys except 4L FAF to MAP 4.7 NM | 273° 4.7 NM from FAF |
| Knots | 60 90 120 150 180 |
| Min:Sec | 4:42 3:08 2:21 1:53 1:34 |
| CATEGORY | A |
| S-ILS 28R | 851/18 200 (200-½) |
| S-LOC 28R | 1120/24 469 (500-½) 1120/50 469 (500-1) |

EC-3, 28 MAR 2019 to 25 APR 2019

EC-3, 28 MAR 2019 to 25 APR 2019