

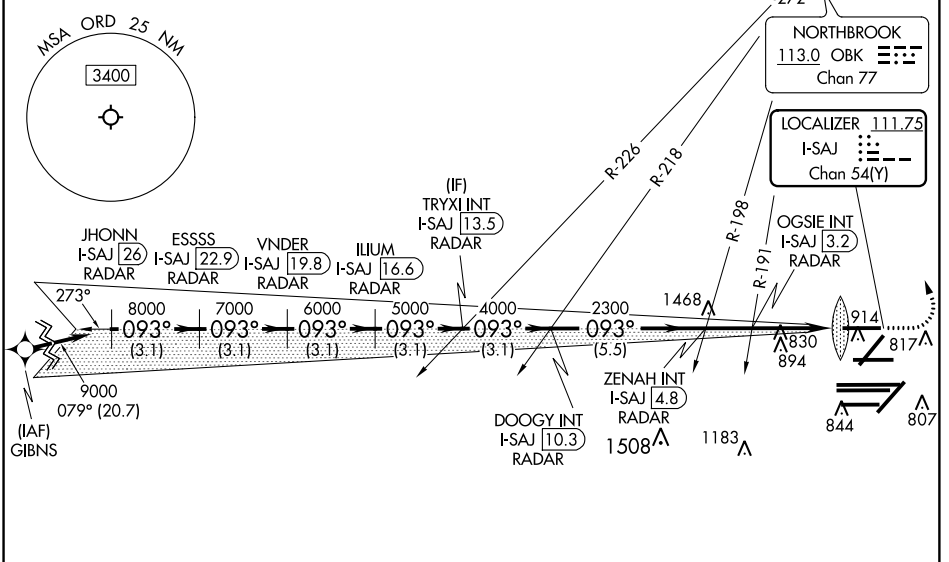
LOC/DME I-SAJ <b>111.75</b> Chan <b>54 (Y)</b>	APP CRS <b>093°</b>	Rwy Idg <b>7500</b> TDZE <b>668</b> Apt Elev <b>680</b>
--	------------------------	--

# ILS or LOC RWY 9L

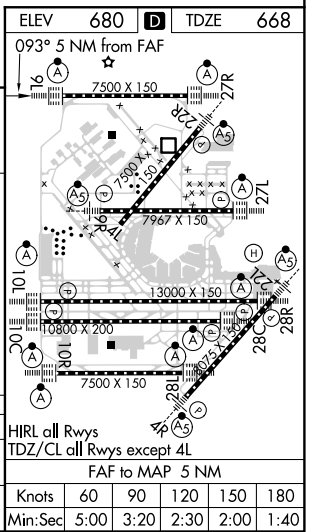
CHICAGO O'HARE INTL (ORD)

RNAV-1 GPS or RADAR required for procedure entry. RADAR or DME required.		ALSIF-2 	MISSED APPROACH: Climb to 1100 then climbing left turn to 4000 direct OBK VOR/DME and hold, continue climb-in-hold to 4000.
Simultaneous approach authorized.			
CHICAGO APP CON <b>119.0 292.125</b>	O'HARE TOWERS <b>128.15 348.0</b> (Rwy 9L/27R) <b>133.0 348.0</b> (110R/28L) <b>124.125</b> (TWR NORTH) <b>121.75</b> (OBND) <b>118.05</b> (TWR SOUTH) <b>121.9</b> (IBND) <b>226.675</b> (ALL TWRS)	GND CON (TWR CENTER) <b>121.75</b> (OBND) <b>121.9</b> (IBND)	CLNC DEL <b>121.6</b>

D-ATIS <b>135.4</b> <b>282.225</b>	CPDLC
--	-------



JHONN I-SAJ 26 RADAR	ESSSS I-SAJ 22.9 RADAR	VNDER I-SAJ 19.8 RADAR	ILIUM I-SAJ 16.6 RADAR	DOOGY INT I-SAJ 10.3 RADAR	TRYXI INT I-SAJ 13.5 RADAR	ZENAH INT I-SAJ 4.8 RADAR	OGSIE INT I-SAJ 3.2 RADAR	I-SAJ DME ANTENNA IM
3.1 NM	3.1 NM	3.1 NM	3.1 NM	3.1 NM	5.5 NM	1.7 NM	2.2	1
VGSi and ILS glidepath not coincident.		1100		4000		OBK		
GS 3.00° TCH 55		*LOC only		I-SAJ 0.9		I-SAJ 0.2		
CATEGORY	A	B		C		D		
S-ILS 9L	868/18		200 (200-½)					
S-LOC 9L	1080/24	412 (500-½)		1080/40		412 (500-¾)		



EC-3, 28 MAR 2019 to 25 APR 2019

EC-3, 28 MAR 2019 to 25 APR 2019