

LOC/DME I-JAV <b>110.5</b> Chan 42	APP CRS <b>093°</b>	Rwy Idg TDZE Apt Elev <b>7709</b> <b>660</b> <b>680</b>
--	------------------------	--

# ILS or LOC RWY 9R

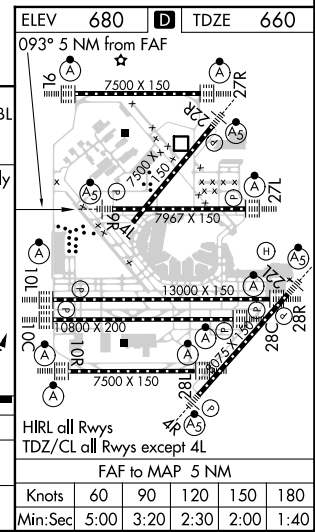
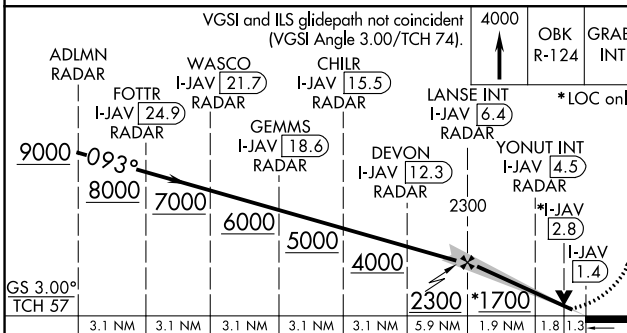
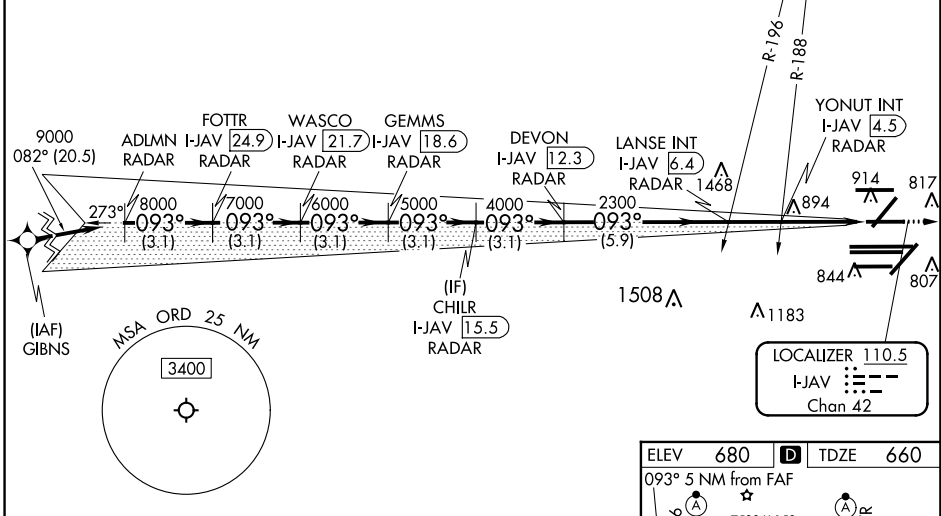
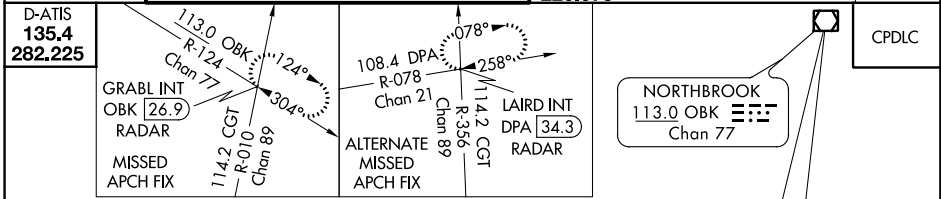
CHICAGO O'HARE INTL (ORD)

From GIBNS: RNAV 1-GPS required. RADAR or DME required.  
Aircraft not GPS equipped: RADAR required for procedure entry.

MALSR MISSED APPROACH: Climb to 4000 on OBK VOR/DME R-124 to GRABL INT/OBK 26.9 DME/RADAR and hold.

Simultaneous approach authorized.  
For inop ALS, increase S-LOC 9R Cat C/D visibility to 1 1/2 SM.

CHICAGO APP CON <b>119.0 292.125</b>	O'HARE TOWERS <b>128.15 348.0</b> (Rwy 9L/27R) <b>126.9 132.7 348.0</b> (10R/28L) <b>126.9 132.7 348.0</b> (CENTER)	GND CON (TWR CENTER) <b>124.125</b> (TWR NORTH) <b>118.05</b> (TWR SOUTH) <b>226.675</b> (ALL TWRs)	CLNC DEL <b>121.6</b>
---	--	--	--------------------------



CATEGORY	A	B	C	D
S-ILS 9R	860/18		200 (200-1/2)	
S-LOC 9R	1160/24		500 (500-1/2)	

EC-3, 28 MAR 2019 to 25 APR 2019

EC-3, 28 MAR 2019 to 25 APR 2019