

# ILS PRM RWY 10C (CAT II & III)

(CLOSE PARALLEL)

CHICAGO O'HARE INTL (ORD)

LOC/DME I-SXH <b>108.95</b> Chan 26(Y)	APP CRS <b>093°</b>	Rwy Ldg <b>10540</b> TDZE <b>669</b> Apt Elev <b>680</b>
--	------------------------	--

RNAV 1-GPS or RADAR required for procedure entry. DME or RADAR required.  
From GIBNS: RNAV-1 GPS required.

**▼** CAT II: RVR 1000 authorized with specific OPSPEC, MSPEC, or LOA approval and use of Autoland or HUD touchdown.  
Simultaneous approach authorized. Use of FD or AP required during simultaneous operations. Dual VHF comm required. See additional requirements on AAUP.

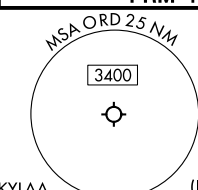
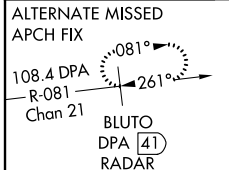


MISSED APPROACH: Climb to 4000 on heading 093° and CGT VORTAC R-336 to CGT VORTAC and hold.

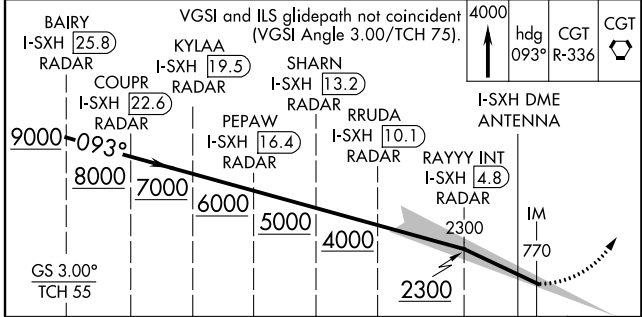
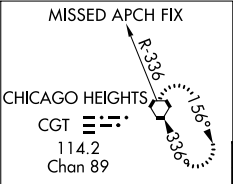
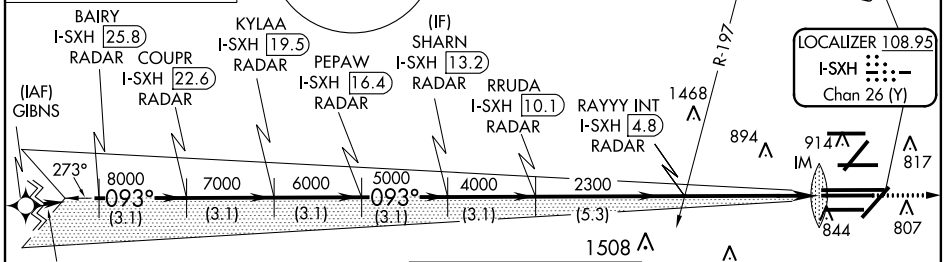
D-ATIS <b>135.4</b> <b>282.225</b>	CHICAGO APP CON <b>119.0 292.125</b>
--	---

O'HARE TOWERS				
<b>128.15</b>	<b>348.0</b> (Rwy 9L/27R)	<b>133.0</b>	<b>348.0</b> (10R/28L)	
<b>120.75</b>	<b>121.15</b>	<b>126.9</b>	<b>132.7</b>	<b>348.0</b> (CENTER)
<b>PRM 119.625</b>				

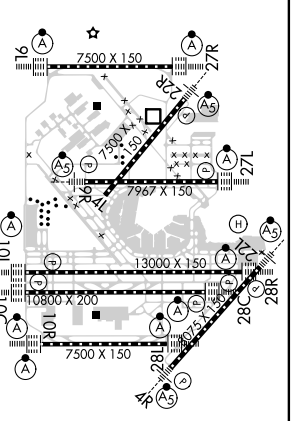
GND CON (TWR NORTH) <b>124.125</b>	(TWR CENTER) <b>121.75</b> (OBND)
(TWR SOUTH) <b>118.05</b>	(IBND) <b>121.9</b>
<b>226.675</b> (ALL TWRs)	



CLNC DEL <b>121.6</b>	CPDLC
--------------------------	-------



ELEV 680	<b>D</b>	TDZE 669
----------	----------	----------



CATEGORY	A	B	C	D
S-ILS 10C	CAT II RA 102/12 100 DA 769			
S-ILS 10C	CAT III RVR 06			

**CATEGORY II and III ILS - SPECIAL AIRCREW & AIRCRAFT CERTIFICATION REQUIRED**

HIRL all Rwys  
TDZ/CL all Rwys except 4L

# ILS PRM RWY 10C (CAT II & III) (CLOSE PARALLEL)

EC-3, 28 MAR 2019 to 25 APR 2019

EC-3, 28 MAR 2019 to 25 APR 2019