

# ILS PRM RWY 10C (SA CAT I) (CLOSE PARALLEL)

CHICAGO O'HARE INTL (ORD)

LOC/DME I-SXH <b>108.95</b> Chan 26(Y)	APP CRS <b>093°</b>	Rwy Ldg <b>10540</b> TDZE <b>669</b> Apt Elev <b>680</b>
--	------------------------	--

RNAV 1-GPS or RADAR required for procedure entry. DME or RADAR required.  
From GIBNS: RNAV-1 GPS required.



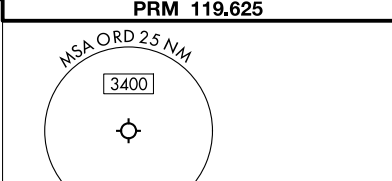
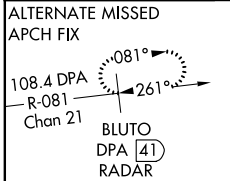
MISSED APPROACH: Climb to 4000 on heading 093° and CGT VORTAC R-336 to CGT VORTAC and hold.

Requires specific OPSPEC, MSPEC, or LOA approval and use of HUD to DH. Simultaneous approach authorized. Use of FD or AP required during simultaneous operations. Dual VHF comm required. See additional requirements on AAUP.

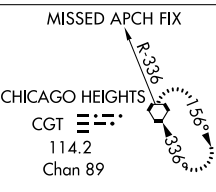
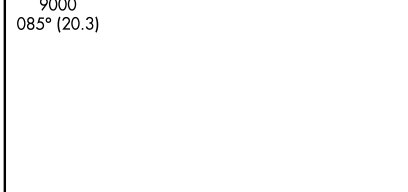
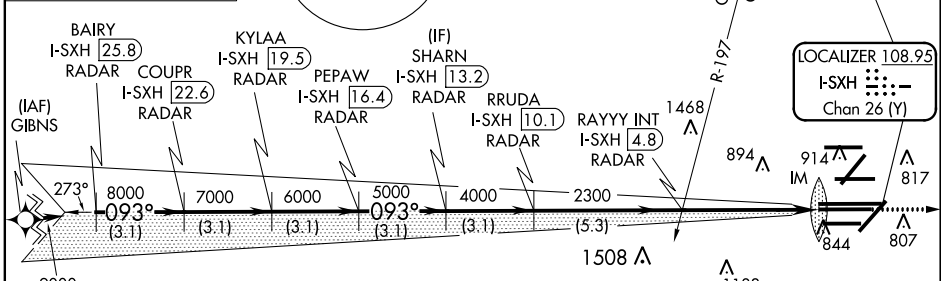
D-ATIS <b>135.4</b>	CHICAGO APP CON <b>282.225 119.0 292.125</b>
------------------------	---

O'HARE TOWERS			
<b>128.15</b>	<b>348.0</b> (Rwy 9L/27R)	<b>133.0</b>	<b>348.0</b> (10R/28L)
<b>120.75</b>	<b>121.15</b>	<b>126.9</b>	<b>132.7</b>
<b>PRM 119.625</b>			

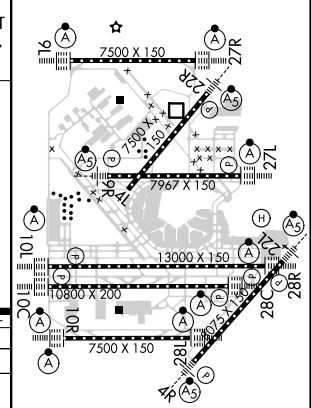
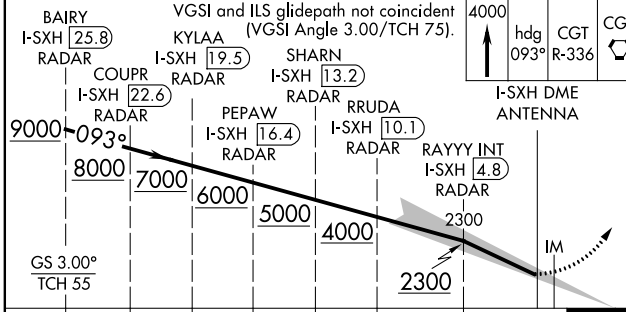
GND CON (TWR NORTH) <b>124.125</b>	(TWR CENTER) (TWR SOUTH) <b>121.75</b> (OBND) <b>121.9</b> (IBND)
<b>226.675</b> (ALL TWR)	



CNLC DEL <b>121.6</b>	CPDLC
--------------------------	-------



ELEV 680	D	TDZE 669
----------	---	----------



3.1 NM	3.1 NM	3.1 NM	3.1 NM	3.1 NM	5.3 NM	5 NM	1091'
--------	--------	--------	--------	--------	--------	------	-------

CATEGORY S-ILS 10C RA 148/14 150 DA 819

**SA CATEGORY I ILS - SPECIAL AIRCREW & AIRCRAFT CERTIFICATION REQUIRED**

HIRL all Rwys  
TDZ/CL all Rwys except 4L

EC-3, 28 MAR 2019 to 25 APR 2019

EC-3, 28 MAR 2019 to 25 APR 2019