

LOC/DME I-VZE <b>108.95</b> Chan <b>26 (Y)</b>	APP CRS <b>273°</b>	Rwy ldg <b>10800</b> TDZE <b>651</b> Apt Elev <b>680</b>
--	------------------------	--

(CLOSE PARALLEL)

CHICAGO O'HARE INTL (ORD)

Aircraft not GPS equipped - RADAR required for procedure entry.  
DME or RADAR required.  
From VOGLR: RNAV 1-GPS required.

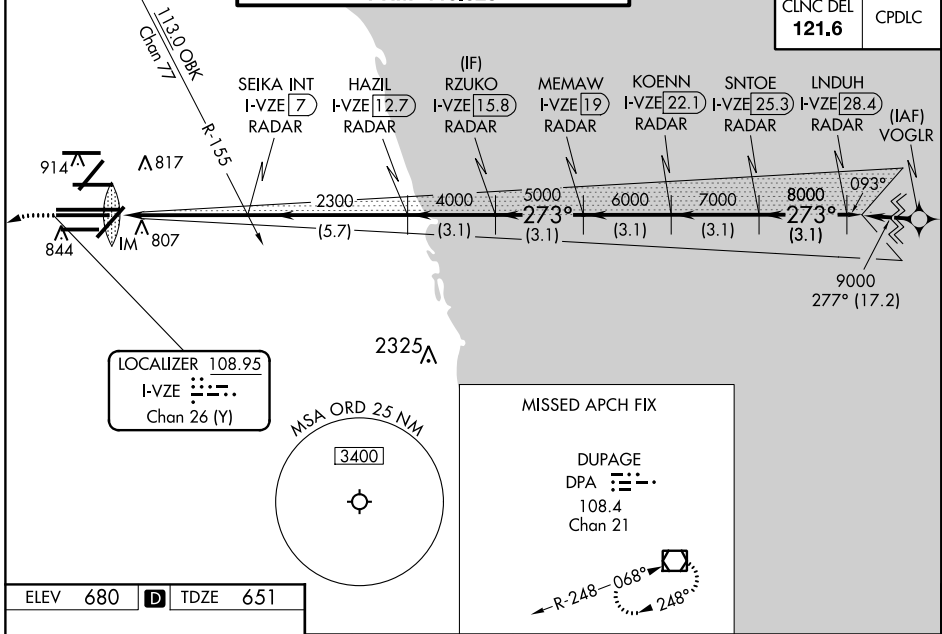
ALSF-2

MISSED APPROACH:  
Climb to 1100 then climbing  
left turn to 4000 on heading  
215° and DPA VOR/DME  
R-082 to DPA VOR/DME  
and hold.

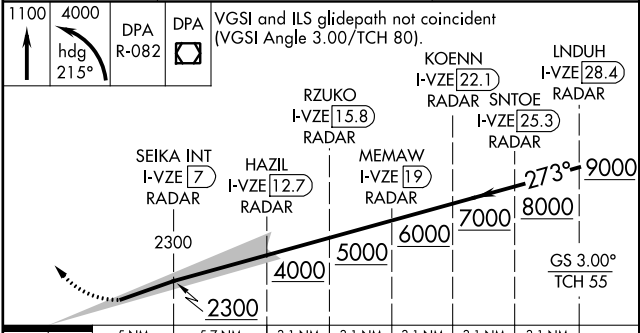
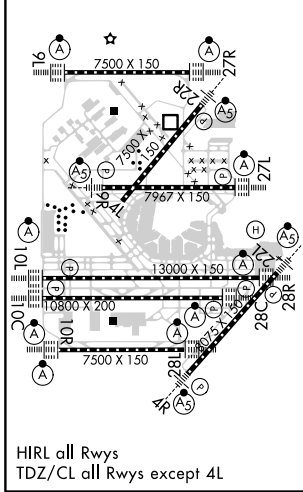
Simultaneous approach authorized. Use of FD or AP required during simultaneous operations. Dual VHF comm required. See additional requirements on AAUP.  
Requires specific OPSPEC, MSPEC, or LOA approval and use of HUD to DH.

D-ATIS <b>135.4</b> <b>282.225</b>	CHICAGO APP CON <b>119.0</b> <b>292.125</b>	O'HARE TOWERS <b>128.15</b> <b>348.0</b> (Rwy 9L/27R) <b>133.0</b> <b>348.0</b> (10R/28L) <b>120.75</b> <b>121.15</b> <b>126.9</b> <b>132.7</b> <b>348.0</b> (CENTER) <b>PRM 119.625</b>	GND CON (TWR CENTER) (TWR NORTH) (TWR SOUTH) (ALL TWRs) <b>124.125</b> <b>121.75</b> (OBND) <b>121.9</b> (IBND) <b>226.675</b>
--	---	---	---

CLNC DEL <b>121.6</b>	CPDLC
--------------------------	-------



ELEV <b>680</b>	<b>D</b>	TDZE <b>651</b>
-----------------	----------	-----------------



CATEGORY	A	B	C	D
S-ILS 28C	RA 155/14 150 DA 801			

**SA CATEGORY I ILS - SPECIAL AIRCREW & AIRCRAFT CERTIFICATION REQUIRED**