

LOC/DME I-BYW 110.9 Chan 46	APP CRS 091°	Rwy Idg 7500 TDZE 680 Apt Elev 680
---	------------------------	---

ILS PRM Y RWY 10R (CLOSE PARALLEL)

CHICAGO-O'HARE INTL (ORD)

RNAV 1-GPS or RADAR required for procedure entry. DME or RADAR required.
From GIBNS: RNAV-1 GPS required.

ALSIF-2

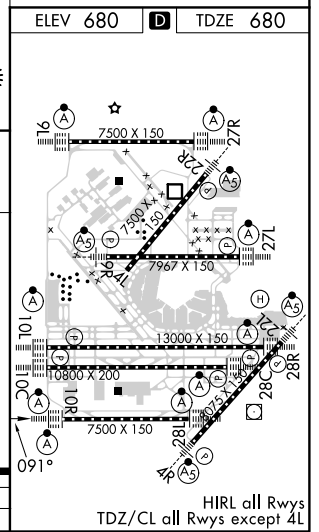
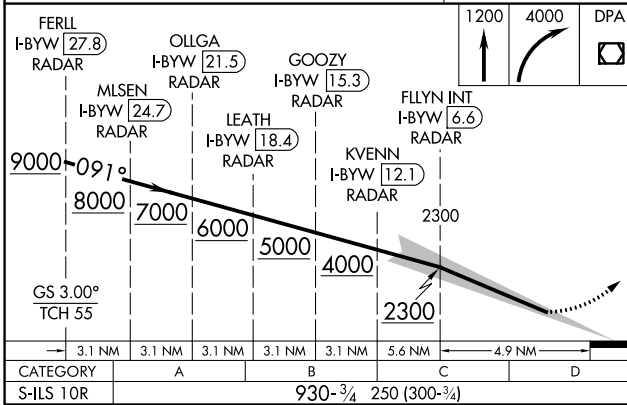
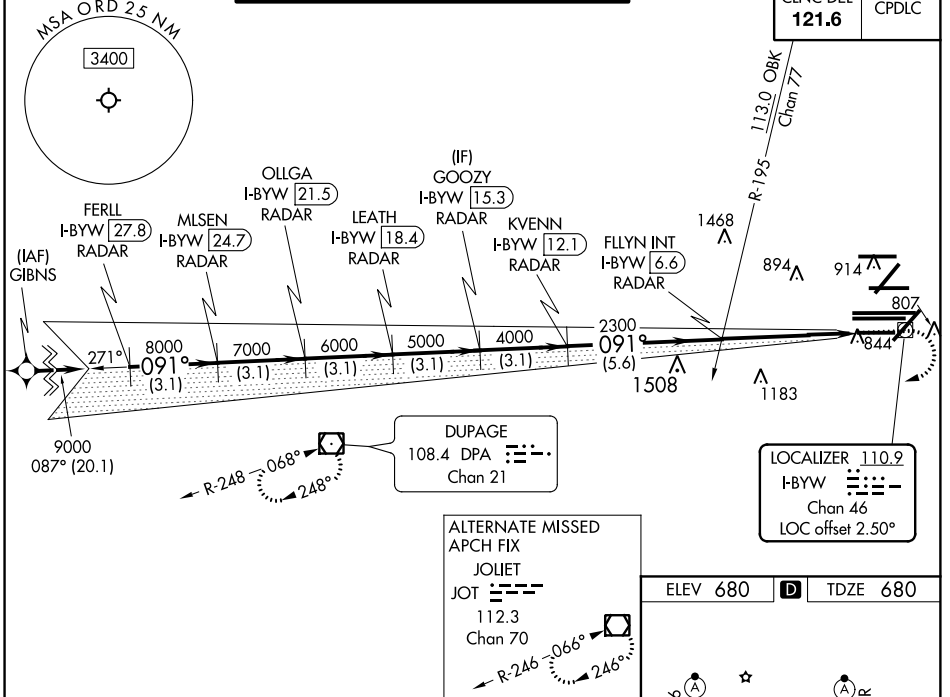
MISSED APPROACH: Climb to 1200 then climbing right turn to 4000 direct DPA VOR/DME and hold.

Simultaneous approach authorized. Use of FD or AP required during simultaneous operations. Dual VHF Comm requirements. See additional requirements on AAUP. Inop table does not apply to S-ILS 10R all Cats.
Rwy 10R helicopter visibility reduction below 3/4 SM NA.

D-ATIS 135.4	CHICAGO APP CON 119.0 292.125	O'HARE TOWERS 128.15 348.0 (Rwy 9L/27R) 133.0 348.0 (10R/28L) 120.75 121.15 126.9 132.7 348.0 (CENTER) PRM 128.05
------------------------	---	--

GND CON (TWR NORTH) 124.125	(TWR CENTER) 121.75 (OBND)
(TWR SOUTH) 118.05	(IBND) 121.9
ALL TWRS 226.675	

CLNC DEL 121.6	CPDLC
--------------------------	-------



EC-3, 28 MAR 2019 to 25 APR 2019

EC-3, 28 MAR 2019 to 25 APR 2019