

LOC/DME I-HZJ <b>110.75</b> Chan 44 (Y)	APP CRS <b>094°</b>	Rwy Ldg TDZE Apt Elev <b>7500</b> <b>680</b> <b>680</b>
---	------------------------	--

# ILS Z RWY 10R (SA CAT I)

CHICAGO INTL (ORD)

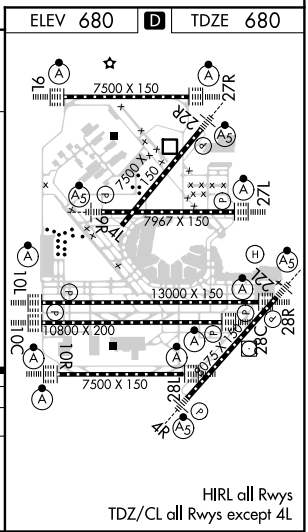
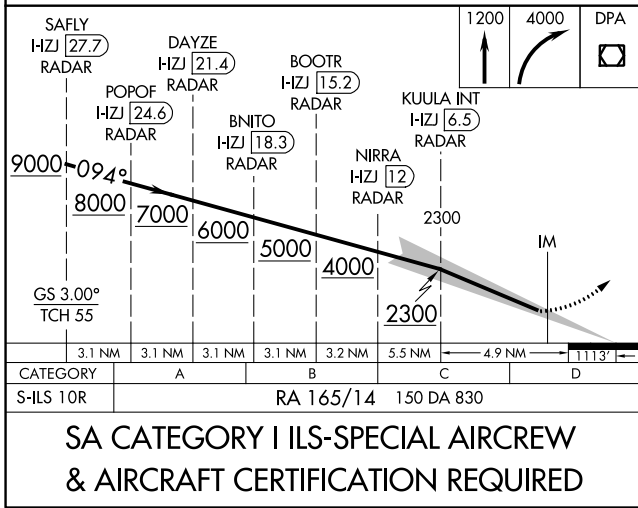
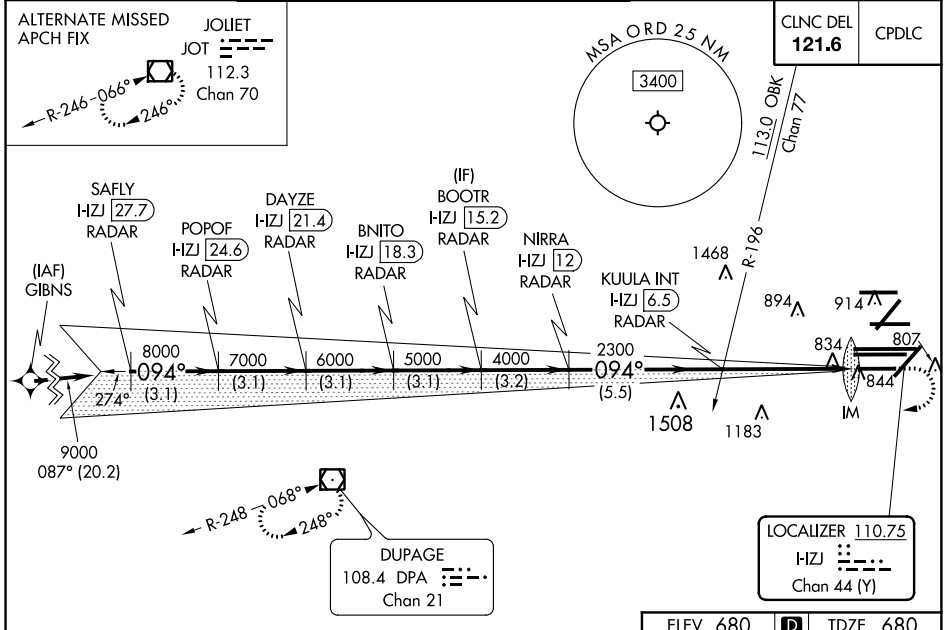
RNAV 1-GPS or RADAR required for procedure entry. DME or RADAR required.  
From GIBNS: RNAV-1 GPS required.

ALSF-2

MISSED APPROACH: Climb to 1200 then climbing right turn to 4000 direct DPA VOR/DME and hold.

Simultaneous approach authorized. Requires specific OPSPEC, MSPEC, or LOA approval and use of HUD to DH.

D-ATIS <b>135.4</b> <b>282.225</b>	CHICAGO APP CON <b>119.0</b> <b>292.125</b>	O'HARE TOWERS <b>128.15</b> <b>348.0</b> (Rwy 9L/27R) <b>120.75</b> <b>121.15</b> <b>126.9</b> <b>132.7</b> <b>348.0</b> (CENTER)	GND CON (TWR CENTER) (TWR NORTH) (TWR SOUTH) <b>124.125</b> <b>118.05</b> <b>226.675</b> (ALL TWRS)	<b>121.75</b> (OBND) <b>121.9</b> (IBND)
--	---	---	--	---



EC-3, 28 MAR 2019 to 25 APR 2019

EC-3, 28 MAR 2019 to 25 APR 2019