

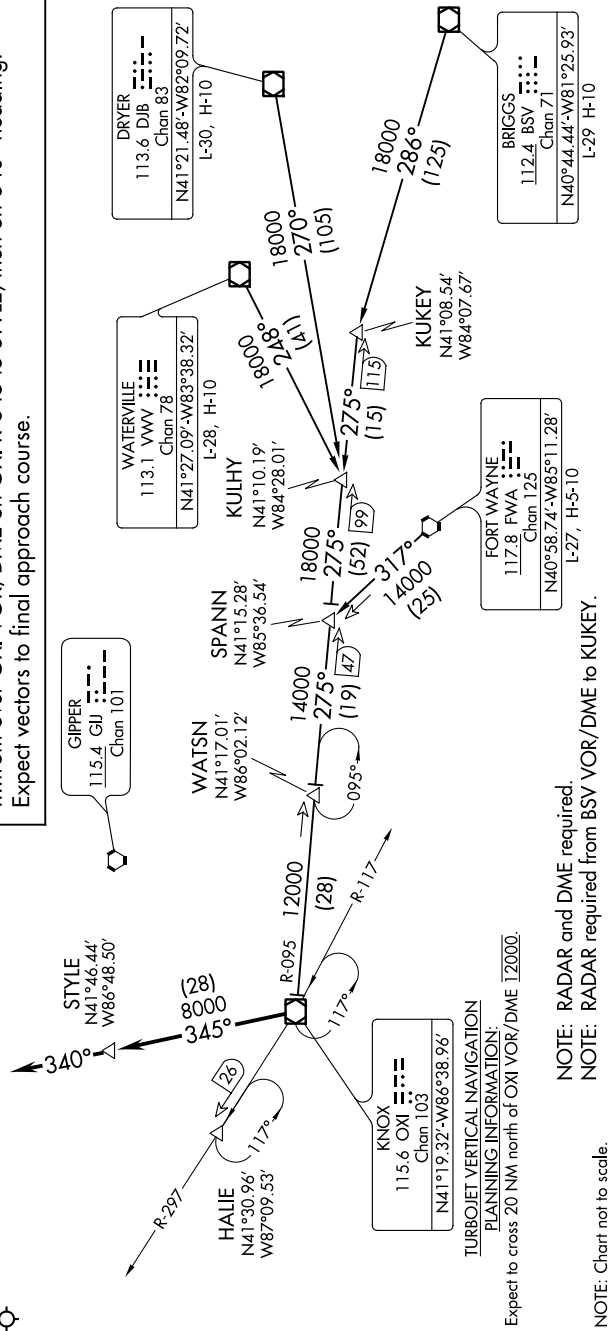
EC-3, 28 MAR 2019 to 25 APR 2019

D-ATIS
135.4 282.225
CHICAGO APP CON
119.0 292.125

ARRIVAL ROUTE DESCRIPTION

BRIGGS TRANSITION (BSV.OX17): From over BSV VOR/DME on BSV R-286 to KUKEY, then on OXI R-095 to OXI VOR/DME. Thence....
DRYER TRANSITION (DJB.OX17): From over DJB VOR/DME on DJB R-270 to KULHY, then on OXI R-095 to OXI VOR/DME. Thence....
FORT WAYNE TRANSITION (FWA.OX17): From over FWA VORTAC on FWA R-317 to SPANN, then on OXI R-095 to OXI VOR/DME. Thence....
WATERVILLE TRANSITION (VWV.OX17): From over VWV VOR/DME on VWV R-248 to KULHY, then on OXI R-095 to OXI VOR/DME. Thence....

...from over OXI VOR/DME on OXI R-345 to STYLE, then on 340° heading. Expect vectors to final approach course.



TURBOJET VERTICAL NAVIGATION
PLANNING INFORMATION:
Expect to cross 20 NM north of OXI VOR/DME 12000.

NOTE: RADAR and DME required.
NOTE: RADAR required from BSV VOR/DME to KUKEY.

NOTE: Chart not to scale.

EC-3, 28 MAR 2019 to 25 APR 2019