

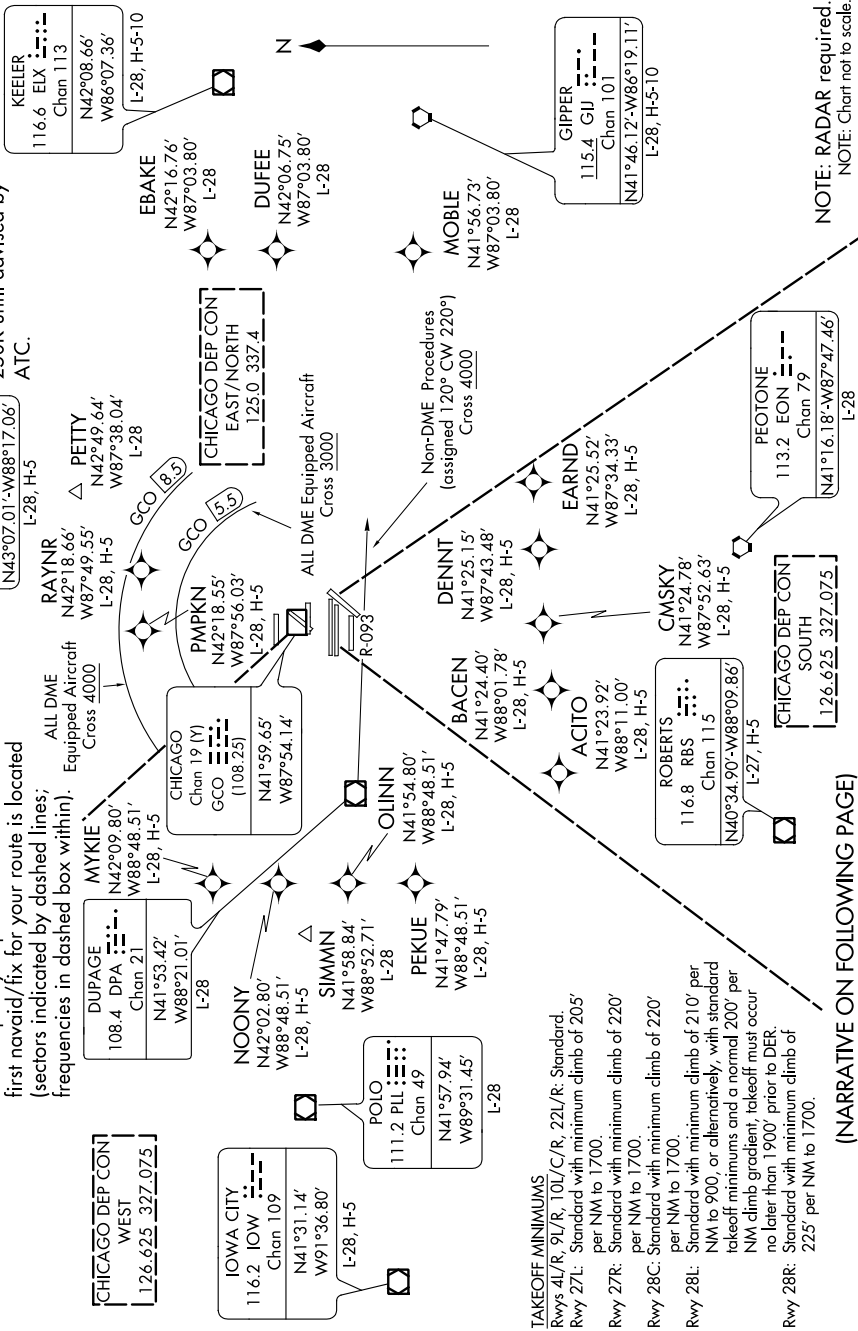
O'HARE FIVE DEPARTURE

EC-3, 28 MAR 2019 to 25 APR 2019

TOP ALTITUDE:
5000

SPECIAL INSTRUCTIONS: For appropriate departure control frequency, see graphic. Use frequency depicted within the sector where first navaid/fix for your route is located (sectors indicated by dashed lines; frequencies in dashed box within).

NOTE: All turbo-jet departures in all directions, maintain 250K until advised by ATC.



NOTE: RADAR required.
NOTE: Chart not to scale.

EC-3, 28 MAR 2019 to 25 APR 2019

O'HARE FIVE DEPARTURE

(NARRATIVE ON FOLLOWING PAGE)

TAKEOFF MINIMUMS
 Rwy 4/R, 9L/R, 10L/C/R, 22L/R: Standard.
 Rwy 27L: Standard with minimum climb of 205' per NM to 1700.
 Rwy 27R: Standard with minimum climb of 220' per NM to 1700.
 Rwy 28C: Standard with minimum climb of 220' per NM to 1700.
 Rwy 28L: Standard with minimum climb of 210' per NM to 900, or alternatively, with standard takeoff minimums and a normal 200' per NM climb gradient, takeoff must occur no later than 1900' prior to DER.
 Rwy 28R: Standard with minimum climb of 225' per NM to 1700.