


WAAS CH <b>48904</b> <b>W10A</b>	APP CRS <b>093°</b>	Rwy Idg TDZE Apt Elev	<b>12246</b> <b>672</b> <b>680</b>
----------------------------------------	------------------------	-----------------------------	------------------------------------------

# RNAV (GPS) RWY 10L

CHICAGO-O'HARE INTL (ORD)

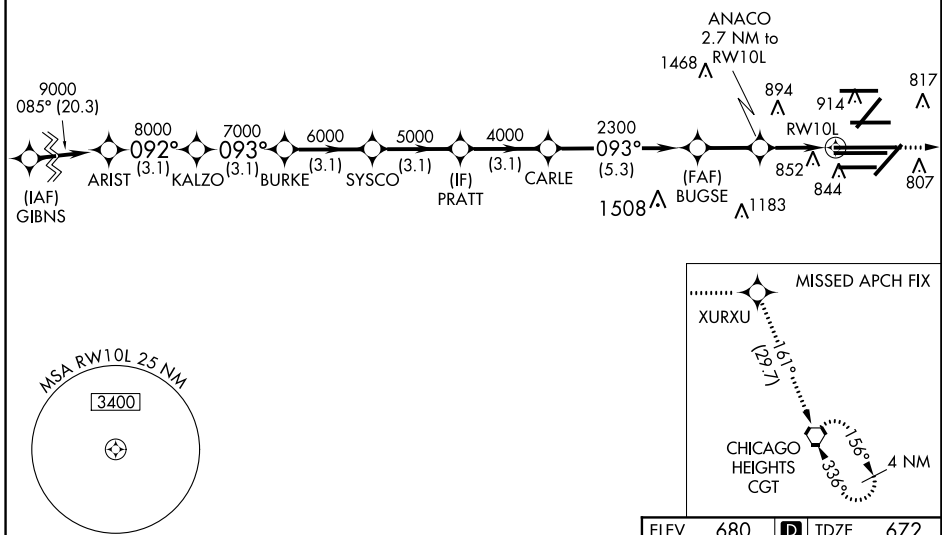
**▼** For uncompensated Baro-VNAV systems, LNAV/VNAV NA below -19°C (-2°F) or above 54°C (130°F). DME/DME RNP-0.3 NA. Simultaneous approach authorized. LNAV procedure NA during simultaneous operations. Use of FD or AP providing RNAV track guidance required during simultaneous operations.

ALSF-2  
  
 MISSED APPROACH: Climb to 4000 direct XURXU and on track 161° to CGT VORTAC and hold.

D-ATIS <b>135.4</b> <b>282.225</b>	CHICAGO APP CON <b>119.0 292.125</b>	O'HARE TOWERS <b>128.15 348.0</b> (Rwy 9L/27R) <b>133.0 348.0</b> (10R/28L) <b>120.75 121.15 126.9 132.7 348.0</b> (CENTER)				GND CON (TWR NORTH) <b>124.125</b> <b>118.05</b> (TWR SOUTH) <b>226.675</b> (ALL TWR)	(TWR CENTER) (OBND) <b>121.75</b> <b>121.9</b> (IBND)
------------------------------------------	-----------------------------------------	--------------------------------------------------------------------------------------------------------------------------------	--	--	--	------------------------------------------------------------------------------------------------	-------------------------------------------------------------

## RADAR REQUIRED

CLNC DEL <b>121.6</b>	CPDLC
--------------------------	-------



EC-3, 28 MAR 2019 to 25 APR 2019

EC-3, 28 MAR 2019 to 25 APR 2019

VGSIs and RNAV glidepaths not coincident (VGSIs Angle 3.00/TCH 74).		4000	XURXU	tr 161°	CGT
ARIST 9000 092°		KALZO 8000 093°	BURKE 7000	SYSCO 6000	PRATT 5000
GP 3.00° TCH 56		3.1 NM	3.1 NM	3.1 NM	3.1 NM
3.1 NM		5.3 NM	2.2 NM	1.5 NM	1.2 NM
CATEGORY	A	B	C	D	
LPV DA	872/18		200 (200-½)		
LNAV/VNAV DA	1056/40		384 (400-¾)		
LNAV MDA	1120/24	448 (500-½)	1120/45	448 (500-¾)	

