

WAAS CH <b>69508</b> <b>W27B</b>	APP CRS <b>273°</b>	Rwy Idg TDZE Apt Elev	<b>7500</b> <b>664</b> <b>680</b>
--	------------------------	-----------------------------	---

# RNAV (GPS) RWY 27R

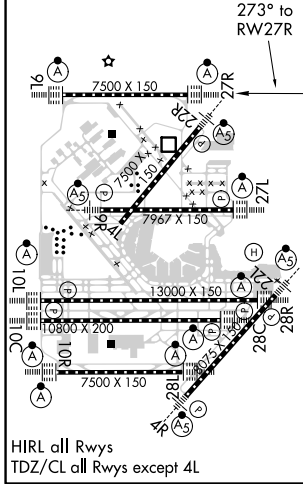
CHICAGO O'HARE INTL (ORD)

RNP APCH.	ALSIF-2 	MISSED APPROACH: Climb to 1100 then climbing right turn to 4000 direct UMUZI and hold.
RADAR required for procedure entry.		
⚠ For uncompensated Baro-VNAV systems, procedure NA below -19°C or above 54°C. Simultaneous approach authorized. LNAV procedure NA during simultaneous operations. Use of FD or AP providing RNAV track guidance required during simultaneous operations.		

D-ATIS <b>135.4</b>	CHICAGO APP CON <b>119.0 292.125</b>	O'HARE TOWERS <b>128.15 348.0</b> (Rwy 9L/27R) <b>133.0 348.0</b> (10R/28L) <b>124.125</b> (TWR CENTER) <b>121.75</b> (OBND) <b>118.05</b> (TWR SOUTH) <b>121.9</b> (IBND)				GND CON <b>226.675</b> (ALL TWRS)
------------------------	---	---	--	--	--	--------------------------------------



ELEV 680	<b>D</b>	TDZE 664
----------	----------	----------



1100	4000	UMUZI	VGSi and RNAV glidepath not coincident.				JOKKR	VINNY
* LNAV only.								
* 1.2 NM to RWY27R		SIBLY 2200	BONZO 4000	HAREE 5000	WELEV 6000	IYLEK 7000	JOKKR 8000	VINNY 9000
RWY27R		← 6.4 NM →		← 3.1 NM →	← 3.1 NM →	← 3.1 NM →	← 3.1 NM →	← 3.1 NM →
GP 3.00°	TCH 55							
CATEGORY	A		B		C		D	
LPV DA	864/18		200 (200-½)					
LNAV/VNAV DA	961/24		297 (300-½)					
LNAV MDA	1120/24 456 (500-½)		1120/45 456 (500-¾)					

EC-3, 28 MAR 2019 to 25 APR 2019

EC-3, 28 MAR 2019 to 25 APR 2019