

WAAS CH <b>99508</b> <b>W09B</b>	APP CRS <b>093°</b>	Rwy ldg TDZE Apt Elev	<b>7500</b> <b>668</b> <b>680</b>
--	------------------------	-----------------------------	---

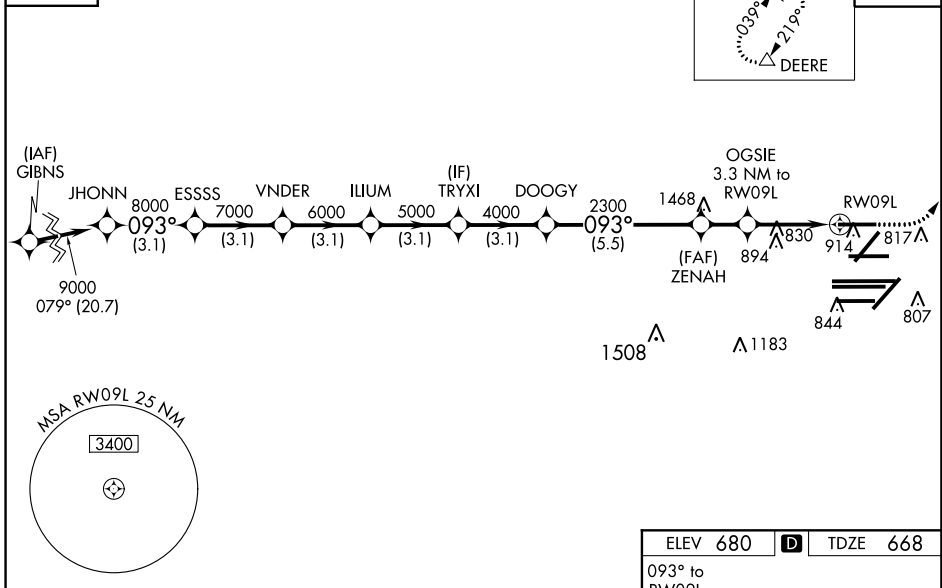
# RNAV (GPS) RWY 9L

CHICAGO O'HARE INTL (ORD)

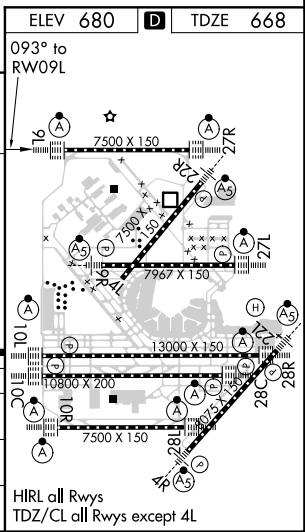
PBN APCH. RADAR required for procedure entry.		ALSIF-2 	MISSED APPROACH: Climb to 1100 then climbing left turn to 4000 direct DEERE and hold.
▼ For uncompensated Baro-VNAV systems, procedure NA below -19°C or above 54°C. Simultaneous approach authorized. LNAV procedure NA during simultaneous operations. Use of FD or AP providing RNAV track guidance required during simultaneous operations. For inop ALSF, increase LNAV/VNAV all Cats visibility to RVR 5000 and LNAV Cts C/D visibility to RVR 6000.			

CHICAGO APP CON	O'HARE TOWERS				GND CON		(TWR CENTER)	CLNC DEL <b>121.6</b>
<b>119.0 292.125</b>	<b>128.15 348.0</b>	<b>133.0 348.0</b>	<b>132.7 348.0</b>	<b>124.125</b>	<b>118.05</b>	<b>121.75</b>	<b>121.9</b>	
	(Rwy 9L/27R)	(10R/28L)	(CENTER)	(TWR NORTH)	(TWR SOUTH)	(OBND)	(IBND)	

D-ATIS <b>135.4</b> <b>282.225</b>	MISSED APCH FIX 4 NM 	CPDLC
--	-----------------------------	-------



VGSi and RNAV glidepath not coincident.		1100	4000	DEERE				
JHONN	ESSSS	VNDER	ILIUM	TRYXI	DOOGY	ZENAH	OGSIE	RW09L
9000	8000	7000	6000	5000	4000	2300	3.3 NM to RW09L	
GP 3.00° TCH 55							*1.1 NM to RW09L	
3.1 NM	3.1 NM	3.1 NM	3.1 NM	3.1 NM	5.5 NM	1.7 NM	2.2	1.1
CATEGORY	A		B		C		D	
LPV DA	868/18		200 (200-½)					
LNAV/VNAV DA	989/30		321 (400-¾)					
LNAV MDA	1080/24	412 (500-½)		1080/40		412 (500-¾)		



EC-3, 28 MAR 2019 to 25 APR 2019

EC-3, 28 MAR 2019 to 25 APR 2019