

CHICAGO, ILLINOIS

AL-166 (FAA)


RNAV (GPS) PRM RWY 10C (CLOSE PARALLEL)

CHICAGO-O'HARE INTL (ORD)

WAAS CH 81934 W10B	APP CRS 093°	Rwy Idg 10540 TDZE 669 Apt Elev 680
--	------------------------	--

▼ DME/DME RNP-0.3 NA. Simultaneous approach authorized. Dual VHF comm required. See additional requirements on AAUP. For uncompensated Baro-VNAV systems, LNAV/VNAV NA below -19°C (-2°F) or above 54°C (130°F). Use of FD or AP providing RNAV track guidance required during simultaneous operations.

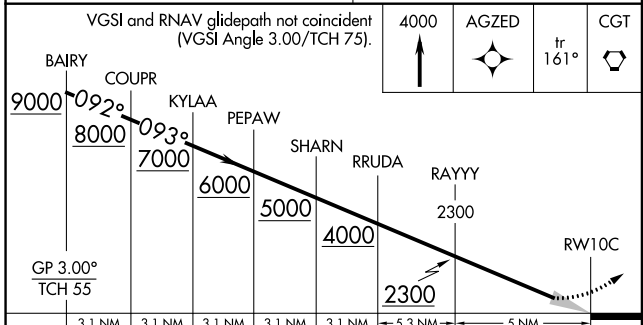
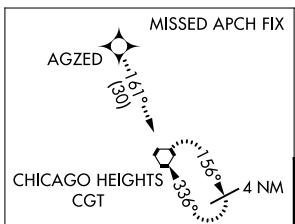
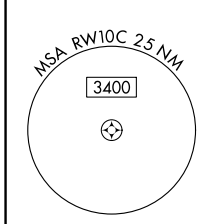
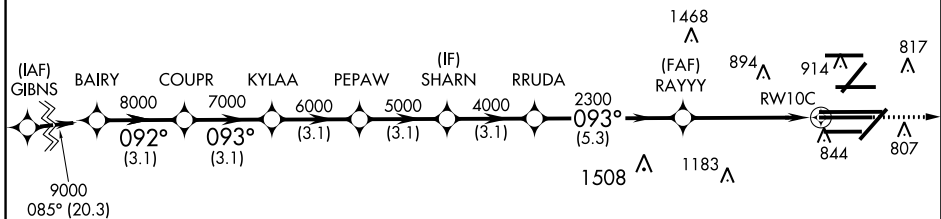
ALSF-2



MISSED APPROACH: Climb to 4000 direct AGZED and on track 161° to CGT VORTAC and hold.

D-ATIS 135.4 282.225	CHICAGO APP CON 119.0 292.125	O'HARE TOWERS 128.15 348.0 (Rwy 9L/27R) 133.0 348.0 (10R/28L) 120.75 121.15 126.9 132.7 348.0 (CENTER) PRM 119.625	GND CON (TWR NORTH) 124.125 (TWR SOUTH) 118.05 (ALL TWRs) 226.675	(TWR CENTER) 121.75 (OBND) (TWR SOUTH) 121.9 (IBND)
			CLNC DEL 121.6	CPDLC

RADAR REQUIRED



		A	B	C	D
CATEGORY					
LPV DA			869/18	200 (200-½)	
LNAV/VNAV DA			1056/40	387 (400-¾)	

ELEV 680 **D** TDZE 669

093° to RW10C

HIRL all Rwy's
TDZ/CL all Rwy's except 4L

EC-3, 28 MAR 2019 to 25 APR 2019

EC-3, 28 MAR 2019 to 25 APR 2019

CHICAGO, ILLINOIS
Orig-A 17AUG17

41°58'N-87°54'W

CHICAGO-O'HARE INTL (ORD)

RNAV (GPS) PRM RWY 10C (CLOSE PARALLEL)